

AUTUMN EDITION



Old Basing & Lychpit

Parish Council Community Newsletter

www.ldbasing.gov.uk

AUTUMN 2023



This is a lovely photo of St Mary's Church taken by Michael Wright – see page 16 to read about the history of the Church and the work of the Friends of St Mary's group and page 12 for photos of the first Pet Blessing Service.

Care at home



Are you beginning to consider care options for yourself or a loved one?

Our comprehensive service offers you the support you need, when you need it, in the comfort of your own home. We offer care visits from as little as 30 minutes a week to full time, 24-hour Live in Care; an excellent alternative to moving into a Care Home.

Our services include:

- Assistance with morning, lunch, teatime & evening routines
- Meal preparation
- Personal care
- Support with mobility
- Light housekeeping & laundry
- Shopping, outings & social activities
- Support with medication
- Respite care
- Live-in care



t: 01256 700991

e: enquiries@calidacare.co.uk

www.calidacare.co.uk

Contents

Chairman's Report – Autumn 2023	4
Parish Council	6
Parish Notes	6
Diary Dates 2023	6
Development Threat	8
The Beddington Centre Report	10
Community Energy in OBL and Bramley	11
St Mary's Church	12
Neighbourhood Plan Update	12
Old Basing Womens Institute	14
The Friends Of The Parish Church Of St. Mary's	16
An interesting discovery	18
Old Basing RBL	20
Village Café	22
Courses with Basingstoke College of Technology	22
A Busy Summer at Old Basing Tennis Club	26
News from Old Basing D of E Award Centre	28
Old Basing Scouts & Guides update	32
Parish Council Year ending 31 March 2023	33
Children's Corner	34
The National Garden Scheme	36
Celebrate birthdays at Basingstoke Leisure Park	38
Old Basing Village Hall Dog Show	38

Please support local businesses

A big thank you goes to all the local businesses that have advertised and supported this newsletter thereby enabling the Parish Council to produce this quarterly publication at no cost to our residents.

However, the Parish Council makes no warranty in relation to the content of any advertisements placed in the newsletter and shall have no liability for any losses in relation thereto. Furthermore, the Parish Council makes no endorsements whatsoever with regard to any advertisements.



Day Trips and Holidays

Picking up in Old Basing & Chineham
Ring or email for new brochure



Coaches & minibuses with driver also available
Airports, Weddings, Days/Nights Out,
Sports Events, Corporate

01252 265 263

Enquiries@CandyTours.co.uk

www.CandyTours.co.uk

Wawa Massage Therapy

We offer a variety of massage services to help you relax and feel your best. From relaxing massages to deep tissue work, we have a service that will suit your needs.

Messages:

Relaxing Massage
Deep Massage
Sports Massage
Hot Stone Massage

Treatments:

Cupping
Acupuncture
Reflexology

07460 227 354

wangwin4@hotmail.com

www.wawamassagetherapy.com

3-4 New St, Basingstoke RG21 7DE



To advertise please call
01843 523030
or email info@communityad.co.uk

Chairman's Report – Autumn 2023

Development Threat – Following the proposed East of Basingstoke development sham consultation by HCC and Tibbalds, Parish Council reactions can be found in this issue.

Encroachment or 'land grabbing'

It has been noticed that this has happened where some residents have encroached on to local community amenity land.

All parish residents are respectfully reminded that this is wrong and could cause damage to our natural and community environment. Also, it may be considered as trespass and any items that are deposited as 'fly-tipping'. Offenders face the risk of paying to reinstate the community land and/or 'fly-tipping' fines.

You can always check with the Land Registry to find out who owns the land. However, if the land is not registered, then you have a search on your hands if private owners are reluctant to cooperate or are absent or deceased. Back to the Domesday Book!

Comments on BDBC Planning applications:

Residents are reminded that the correct way to comment on planning applications is directly to the Basingstoke & Dean Borough Council (BDBC) Planning Department. Use the online web page – "View and comment on a planning application" ([basingstoke.gov.uk](https://www.basingstoke.gov.uk)). A letter to the planners is also an option but be sure to quote the application number. Residents are advised to use this formal BDBC process. Comments from a friend living miles away from the application are of little value.

The Parish Clerks cannot submit planning application comments on behalf of parish residents; however, attendance at the Parish Council meeting when an application is on the agenda can help with our own response. The PC encourages individual responses directly to the Borough Council even if you attend a Parish Council meeting.

Use of social media

There is no doubt that social media has its uses, but some postings can be disrespectful and offensive. Would you say the same thing to the person face to face?

Comments on postings may be made with limited knowledge and understanding of the subject. It is obvious by the speed and content of some responses they are made in haste and without thought. If you know nothing, then say nothing.

It is tempting to comment anyway, but banter and jokes about serious subjects detract from the genuine debate. Remarks that are made can be hurtful to individuals with unforeseen consequences.

Please be aware of these problems, use common sense and don't just follow the herd.

Cllr Peter Bloyce
Parish Chairman



CHRISTMAS AT THE REC

Old Basing Recreation Ground
5.00pm onwards Friday 22nd December 2023

Christmas Singalong, Mulled Wine and Hot Chocolate
Come to celebrate together with the community!

No booking required - just come along with your friends and family and enjoy yourselves!

Share the love...

Buy your carpets, rugs & runners locally

Bringing you our collection of award winning natural and sustainable carpets, rugs and runners from the truly independent British flooring brand, Alternative.

If moving home or if you just need some inspirational advice then call instore today to experience how we can help you bring colour pattern or texture to your next home make over.

alternative flooring

www.alternativeflooring.com



Tel. 01256 406646

www.topnotchinteriors.co.uk

Email topnotchinteriors@hotmail.co.uk

Follow us on Facebook & Instagram

Unit 42-43 Basepoint Business Centre,
Stroudley Road, Basingstoke,
Hampshire, RG24 8UP

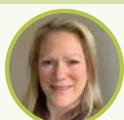


Parish Council

PARISH OFFICE



Sandra Tuck (Clerk)
clerk@oldbasing.gov.uk



Kate Hope (Deputy Clerk)
deputy.clerk@oldbasing.gov.uk

COUNCILLORS



Peter Bloyce
Chair,
Old Basing



Murray Campbell
Vice Chair PC & Chair
Planning Old Basing



Alan Renwick
(Vice-Chair,
Facilities Management)
Old Basing



David Whiter
Old Basing



Kate Tuck
Old Basing



Francesca Maritan
Old Basing



Roger Doust
Lychpit



Steve Brown
Chair, Facilities
Management Ly-
chpit



Charlie Butfoy
Vice-Chair,
Planning
Old Basing



Sheena Grassi
Lychpit



Mark Hermitage
Old Basing

Parish Notes

COUNCILLOR RESIGNATION

We were sorry to lose one of our Lychpit Councillors, Gill Moore, who has resigned to spend more time with her family. During her time on the Parish Council Gill has thrown herself wholeheartedly into local activities and a number of groups have benefited from her efforts. Fortunately for the Parish Council Gill wishes to continue to be involved with the OBLEC group and her activities, along with Cllr Sheena Grassi, in keeping our footpaths clear of overgrowth. We will, of course, be seeking to replace Gill so if you have some time to spare and wish to become involved with parish activities, please contact the Clerk at clerk@oldbasing.gov.uk

On pages 18 and 19 Gill has written an article about her "discovery" whilst visiting Winchester Records Office. It is well worth reading especially for those of us that have not seen the book about Old Basing by Ann Pitcher that Gill refers to. If any residents, especially those that have lived in the Old Basing and Lychpit area for many years, has any historical information or photos they would like to share, we would love to include them in future editions of this Newsletter.

PARISH COUNCIL ACCOUNTS / CIL FUNDING

The Parish Council's accounts for the year 2022/23 are published on pages 33.

You may notice that the income figure is considerably higher than previous years due to payments of Community Infrastructure Levy (CIL) which is paid to the Parish Council for new housing developments within the Parish. For the year 2022/23 this totalled £204,165 and is included in Administrative Income as shown on the Income & Expenditure Account.

CIL funding spent during the year 2022/23 was £26,634 allocated as follows;

Basing Royals Football Team – £10,000

Old Basing Village Hall – £10,000

Millfield & Churchyard Conservation Groups – £3,000

Climate Challenge – Energy Surveys on PC owned properties – £3,634

After allocating the above a total of £177,531 remains and is earmarked for the following:

Milkingpen Lane Footpath

Climate Challenge – implementation of energy saving measures

Parish Council Meetings

Meetings are held in the Parish Office.

Members of the public are welcome to attend any meeting and those with mobility difficulties can be accommodated with advance notice. In addition to the main Parish Council meetings, held on the first Tuesday of each month, regular Committee meetings are held to discuss specific matters.

These Committees are:

Planning & Development Committee

Fourth Tuesday monthly

Finance & Resources Committee

Three meetings per year, in February, June and October

Facilities Management Committee

Bi-monthly, on a Tuesday

Annual Parish Council Meeting

Every May

Annual Parish Meeting

Each year, held between 1 March and 1 June

Diary Dates 2023

September 5 Parish Council Meeting | 26 Planning & Development Committee | 19 Facilities Management Committee

October 3 Parish Council Meeting | 24 Planning & Development Committee | 17 Finance & Resources Committee

November 7 Parish Council Meeting | 28 Planning & Development Committee | 21 Facilities Management Committee

December 5 Parish Council Meeting | Community Partnership Evening | 12 Planning & Development Committee



You could be a family in 2024

Your adoption journey could take less than 6 months

Right now, there are babies, toddlers, siblings and children looking for parents like you.

You don't need savings in the bank

Child Benefit, Universal Credit and free childcare could be available.

- Single or a couple • LGBT+
- Receiving benefits • Renting or own your home • Already a family

Adopt South is the Regional Adoption Agency for:



Hampshire
County Council



Portsmouth
City Council



SOUTHAMPTON
CITY COUNCIL

Call our friendly team on 0300 3000 011 • adoptsouth.org.uk



STRUGGLE TO GET IN AND OUT OF YOUR OLD BATH?



SALE
UP TO
20% OFF**

**FITS IN
THE SAME
SPACE
AS YOUR
OLD BATH!**

**SHOWER
STANDING
UP OR
SITTING
DOWN**

NO WORRIES!

**Bath Out – Shower In
FITTED IN JUST ONE DAY***

No Mess! No Fuss! No Re-Tiling!

Designed to fit in the same space as your old bath, the Shower Module's unique construction enables it to be **FITTED IN JUST ONE DAY!***

- Easy access - low step in
- Optional seat & grab rail
- Other door styles available
- Slip resistant floor
- Built-in shelving
- Hygienic easy clean tile-effect panels

FOR YOUR **FREE** BROCHURE CALL **0800 316 0110**

ASK FOR EXT. 81532 or visit **www.aquability.com**

AQUABILITY
EASY, SAFE BATHING



*Time based on straightforward fitting.
**Not in conjunction with any other offer.

DEVELOPMENT THREAT

Some residents will have visited either Lychpit Community Hall or the Chineham Library to view the proposals put forward by Hampshire County Council in conjunction with Tibbalds for Land East of Basingstoke.

The Parish Council was less than impressed with the way in which this "consultation" was conducted and the Clerk has written to Carolyn Williamson, CEO of HCC to complain as follows:

"I am writing on behalf of Old Basing & Lychpit Parish Council to strongly complain about the Hampshire County Council 'consultation' on Land East of Basingstoke. This deeply flawed exercise was conducted by Tibbalds and other companies likely to benefit from the development, plus token Hampshire County Council staff.

The so-called consultation was deficient in many respects as detailed below.

1. Poor Publicity

Two small posters were placed in a parish of over 7,000 residents. The notice given was only a few weeks for two brief events. We were told there was a widespread letter drop in Lychpit and Old Basing, but this is untrue. No one received a letter or, if so, it was to a tiny and pre-selected group.

2. Lack of public events

A brief presentation was made to the Parish Council. 4 hours was set aside for a public event in Lychpit Hall and 3 hours for another in a small space in Chineham Library. There was no event held at all in Old Basing, the area of the Parish primarily affected, even though the organisers were advised of this omission.

3. Dubious methods of collecting responses at events

Residents were unable to see the information clearly at the events and were invited to attach post-it notes, rather than their responses being collated centrally. We have little confidence that post-it notes which object to the development will be included in any analysis.

4. Quick response timetable

Legitimate consultations usually take 3 months, not a few weeks in the summer when people may be away. The truncated consultation period is intended to limit responses.

5. Response form precludes negative comment

The questions on the website www.landeastofbasingstoke.com are self-serving and simply invite responders to make only positive comments. There is no space offered to object in principle to the development only to reflect on the details.

6. No information about response analysis

There is no information given about who will conduct the analysis, or by when, or how the conclusions will be reported back to the public.

It is difficult to avoid the conclusion that this is a sham consultation where the only intention is to gather

positive responses. At some future date – probably during the Regulation 18 process – the information will then be regurgitated to give the impression that a meaningful consultation took place. This was no more than a box-ticking exercise, poorly conducted, to add credence to the land-owners' case for further development in the Parish.

In addition, the Clerk has also submitted a response by the Parish Council to the "consultation" as follows:

LAND EAST OF BASINGSTOKE

On behalf of Old Basing and Lychpit Parish Council I am writing to respond to your consultation on Land East of Basingstoke. I will be writing separately to the Chief Executive of Hampshire County Council to complain about the consultation exercise itself.

The so-called 'consultation' was poorly publicised, designed to be as brief as possible to avoid public scrutiny, and solicit only favourable opinions. Turning to the site in question, this area is opposite Pyotts Hill and runs alongside the A33. It was previously at the centre of development disputes because 450 houses were allocated to this site in 2016. Residents nearby and in the wider Parish were disappointed with this news but are angry to hear that an additional 450 houses have been proposed.

We strongly dispute the need for additional houses for five key reasons, briefly summarised below:

Damage to the environment. The Inspectors report of 2016 noted that development would result in 'the loss of key habitat' as well as contributing to an 'increase in watercourse phosphate concentration in the River Loddon'. Both factors will be further exacerbated by any additional homes.

ODOUR

Odour from the Basingstoke Sewage Treatment Works can already be overwhelming at times. Indeed in the Inspector's report the odours were described as 'unacceptable'. How would those living in much closer proximity react?

TRAFFIC AND NOISE

The Inspector reported that 'there will be noise from the A33, the incinerator and sewage works'. It was also noted that the development would lead to 'congestion and delays upon the surrounding transport networks'. Residents of Old Basing and Lychpit already endure intrusive levels of traffic using the village as a rat run. Any additional development will greatly exacerbate the problems. The proposal for a bus gate is unworkable and, like so many elsewhere, will disappear in time becoming a general route through the village. This development will be totally car dependent and it is dishonest to pretend otherwise.

B&M FENCING

GARDEN & LANDSCAPE SUPPLIES

Panels	Reclaimed Sleepers	Rolawn Turf
Trellis	Softwood Sleepers	Top Soil
Concrete Post	Oaks Sleepers	Landscape Bark
Closeboard Panels	Decking	Natural Sandstone
Sharp Sand	10mm Gravel	Paving Slabs
Building Sand	20mm Gravel	Block Paving
Ballast	Decorative Stone	Grano Dust
Scalping		



Mon-Fri
7.45am – 5pm

Natural Sandstone
Large Stocks on site
Display Area

Fencing
Fitting Service
Free Estimates

Delivery Service Available

01256 762739

www.bmfencing.co.uk

enquiries@bmfencing.co.uk Reading Road, Hook, Hants, RG27 9DB

UNO_{de50}



The Secret Garden

12 Winchester Street, Basingstoke, Hampshire RG21 7DY
Tel. 01256 329015 // www.thesecondgarden.uk.com
Opening times: Mon - Sat 9.30am - 5.30pm

—THE—
SECRET
GARDEN
DESIGNER JEWELLERY

COMMUNITY - FAMILY VALUES - THE OUTDOORS - AMBITION - FUN

Open Morning
Friday 6th October

Recent scholarships awarded:
Wellington College– Hughes Academic, Dance, Art, Sport
Pangbourne College– Academic, Drama
Leighton Park– Sport, English
Lord Wandsworth College– Sport, DT

ST NEOT'S PREP SCHOOL

A nurturing, progressive, outdoorsy prep school with a solid academic record. Each child is encouraged to discover all of their talents and to develop a passion to pursue them. Children are motivated to embrace challenge, think creatively, develop self-confidence and to foster empathy towards others, preparing them both intellectually and emotionally for success in the modern world.

stneotsprep.co.uk | 0118 973 9650 | admissions@stneotsprep.co.uk

DEVELOPMENT THREAT

WATER AND SEWAGE

The Loddon is one of the five north flowing chalk streams in the world and an extremely rare habitat. Peat bogs are the UK's 'Amazon rainforest' for carbon storage and the river has environmentally important peat bogs 'black lands' dotted along its length. Raw sewage already flows into tributaries several times a year. Our water is supplied from the aquifer which is also providing water to the springs at the source of the river. Additional homes will only worsen the frequency of raw sewage overflows and create abstraction issues.

DOCTORS, DENTISTS AND SCHOOLS

There is one surgery in Old Basing and Lychpit serving the 7,140 residents of the Parish. Adding more people to the Parish will require additional GP facilities to serve new residents. There are no plans provided currently to suggest that this will be the case. The number of patients per GP is already above the average for England and at least four more GPs would be needed to maintain the already stressed situation. One BUPA private dental practice is located in Old Basing and Lychpit. There are currently no NHS places at this practice, forcing residents to look outside of the Parish.

Also, there are currently no NHS places at the dental practices in neighbouring Chineham or anywhere in the locality as the remaining NHS dentist is about to close.

The Parish has an Infants and a Junior school in the Parish, both with few spare places, and no secondary schools. When Lychpit was developed in the late 1970s new residents were promised a primary school. It was finally built 20 years later.

Residents have no confidence in any promises given by Hampshire County Council.

As recently as August 2021, the Council refused the building of just four houses within the private grounds of a house on Pyotts Hill which backs onto site 001. The reason given was the development would 'erode the rural character' of Pyotts Hill and be a threat to an archaeological monument. How would 900 houses be more acceptable?

OBLEC has submitted its own more detailed response to this "consultation" and members of the group are working hard on gathering suitable information on biodiversity and other relevant factors to put forward when a suitable opportunity arises. We expect more information to become available over the coming months and our Winter Newsletter will, in the main, be devoted to highlighting the work of OBLEC – look forward to more stunning photos showing what we stand to lose if these development proposals go ahead.

If you wish to see the OBLEC response please contact the Clerk for a copy.

The Beddington Centre Report

Some 12 months ago, the Bolton U5 Playgroup closed after many years as daytime residents and hirers of the hall and in October last year, the management committee welcomed Old Basing Village Nursery who took over the daytime hire Monday to Friday for their babies and toddlers group.

Requiring much less equipment and "decoration", the hall is now very clean and tidy looking which has opened up its usage to a much wider clientele. Regular users NCT, Step Class and the Old Basing Duke of Edinburgh Award centre are still very much active but we do have room for other users to take vacant spaces.

We leave weekends for occasional hiring for children's parties and similar events, so if you are looking for a small venue to host a gathering then please contact us to enquire.

New for September 2023!

We now have a projector, screen and sound system which will be used by the D of E team and NCT for training and lectures for meetings of up

to 30-40 persons with the option for other groups and business users to make use of the facilities for meetings, seminars, presentations or even cinema evenings. All you will need is a laptop suitable for HDMI connections. Internet will also be available.

For all bookings and costs, please email Cat at beddingtoncentrebookings@gmail.com

Beddington Centre Management Committee

Community Energy in OBL and Bramley

In previous articles, we have described actions that the Parish Council is taking to reduce our energy losses and reduce our carbon emissions.

We have also mentioned actions that residents can take themselves, and in addition to grants and loans being available from Basingstoke and Deane, we believe that we should help support these where we can.

LODDON COMMUNITY ENERGY

(loddoncommunityenergy.org.uk) comprises local Parish Council representatives together with community volunteers. It's still early days but our aims are:

- To generate carbon-free energy through installing PV panels on public and commercial buildings, funded through shares offered to the community.
- To offer domestic energy advice about
 - o Reading energy bills
 - o Insulating your house
 - o Considering PV panels
 - o Considering alternative heating
 - o Having a thermal camera survey undertaken at your house to identify heat loss.

Funding and installing PV panels, often with battery energy storage, seems to us to be a win-win situation in that the owner of the building gets cheaper electricity, and doesn't have to pay out to purchase the equipment. People who buy the shares receive a guaranteed income, and any surplus cash is used to fund energy advice and surveys. Financially, this model only works on larger buildings and we are talking to several institutions in the area at present and hope to be able to offer shares soon. If you would like more details, have a look at the LCE website or send me an email and I will do my best to answer your query.

At present, we are moving much faster in the Bramley and Silchester areas, as we have been given a grant from National Grid specifically for the areas affected by their substation. All members of LCE are unpaid, but this cash means that we are now able to buy in professional help to organise volunteers locally to the areas covered by the NG grant.

WHAT WE WOULD LIKE FROM YOU!

We have several trained energy champions in the Old Basing and Lychpit area but need someone to organise activity as the colder weather approaches. The Parish Council can support this, but we need someone who can take it on as a specific project. We can provide professional help in the Bramley area and may be able to do so

here once cash starts flowing. We still need more volunteers to act as energy champions with the eventual aim of being able to provide energy surveys to residents.

We also need anyone who is a trustee, director or governor of an organisation with large (preferably South facing) roofs who is interested in having PV installed, to contact us.

The extract below is from Bramley Greener Homes, published in Bramley Parish magazine and explains what is happening there.

"Several volunteers have signed up to become Energy Champions for the Bramley Greener Homes project – but more are urgently needed.

Bramley Greener Homes volunteers will give free home energy advice to Bramley and Sherfield-on-Loddon residents – helping them save energy, money and carbon. The project is run by Loddon Community Energy, a not-for-profit community benefit society run by and for local people.

Volunteers don't need any special experience – just an interest in home energy. They will be trained to carry out a basic (but comprehensive) home energy survey, providing advice on energy efficiency improvements.

It's a great opportunity to do something practical about the climate crisis and help your local community. Mark lives locally and signed up as a Bramley Greener Homes volunteer because he wanted to give some of his time to help people at a local level. Talking about the project, he said, "I'm looking forward to getting involved and meeting like-minded people who are interested in learning about how they can make their homes more sustainable".

Meanwhile, we are arranging planning permission and quotes for the work to decarbonise our buildings, including the Parish Office and the Beddington Centre. We would like to consider Lychpit Hall, but as this is leased from Hampshire County Council, we intend to include energy saving in our negotiations with HCC when discussing renewal of the lease.

Cllr. Steve Brown

Stephen.Brown@Oldbasing.gov.uk



St Mary's Church

All things bright & beautiful, all creatures great and small...

We do hope that you were able to come along and enjoy St Mary's Summer Festival at the end of June which concluded with a delightful Pet Blessing Service.

Several dogs, cats (photos), a tortoise and a python were all brought by their human guardians to share in the celebration of, and thanksgiving for, creation. There's nothing much more diverse than that wonderful collection of creatures!



It is planned to make this an annual service, which next year will link into our Harvest Celebration in October. To all who came along and were part of the weekend – thank you for celebrating our life here, together in community – very much 'All Things Bright & Beautiful, All Creatures Great & Small'. (photos courtesy of Mike Wright).

HARVEST CELEBRATION

As we look now towards the autumn and particularly our Harvest Service on 1st October, we'd like to take this opportunity to thank everyone who donates so generously to the Basingstoke Foodbank. We shall once again be



inviting donations to be brought to our harvest service but a reminder that we have a collection box which is emptied weekly outside the main door of the church.

Along the lines of our Summer Festival theme this year, we also are supporting Helping Cats & Dogs UK with their Pet Foodbank. This is a separate organisation to the Basingstoke Foodbank, who also continue to accept pet food donations. A collection box is also located at the church.

We'd like to thank The Street Bakeshop who kindly donated our harvest loaf last year.

CHRISTMAS SERVICES:

Sunday 17th Dec

Carol Service (time to be confirmed but likely 4pm)

Saturday 23rd Dec

Blue Christmas Service at 3pm

Christmas Eve

Crib Services at 2:30 & 4pm. (Midnight Service at 11.15pm)

Christmas Day

Holy Communion at 8am. Sung Eucharist at 9:30am.



Neighbourhood Plan Update



Basingstoke Local Plan Update will soon reach the critical consultation period.

The proposals already include 900 homes and indicate a further 600 homes East of Basingstoke.

This constitutes a substantial threat to the natural environment and landscape of the Loddon Valley, which past survey has shown to be highly valued by the community. Basingstoke's plan would encourage coalescence with Old Basing and Lychpit and reduce the effectiveness of the green areas of Basing Fen, Barton's Mill and the Millfield.

The Parish Council plans to update the Neighbourhood Plan to mitigate these proposals and is in the process of appointing consultants.

We have reviewed the success of existing policies (moderate) and put together new objectives for the parish and will put out a questionnaire to residents to get your opinion on development.

If you want to take part, contact clerk@oldbasing.gov.uk

tutors for
excellence //

GCSE English Tuition

**Unlock your
potential!**

Contact us today for
a free consultation!

call: **01256 320 986**

text: **07933 650 516**

email: enquiries@tutorsforexcellence.co.uk



Scan to message us on
WhatsApp



JONATHAN WILLIAMS **Independent Funeral Directors**

- Family run Funeral Directors with traditional high standards
- Providing a caring, dedicated and professional service
24 hours a day, 365 days a year
- Private and peaceful Chapel of Rest
- Our family caring for your family

35-41 Essex Road

Basingstoke RG21 7TB

01256 817603 (24hrs)



Old Basing Womens Institute

Old Basing WI has been running for 104 years and currently has over 40 Members from Old Basing and Lychpit, the surrounding villages and beyond.

theWI

INSPIRING WOMEN

We provide a selection of speakers throughout the year at our monthly meetings as well as taking part in social activities, quizzes, talks and walks. We have been busy over the Summer. Our coach trip to Pamela Lewis's garden in May was a great success and enjoyed by all who went. Apart from the fantastic home-made food provided by Pam, some lucky Members had the chance to win some of the beautiful flower arrangements that Pam is famous for.

In June we welcomed Sophie Fryer to talk to us about couture millinery. Sophie was kind enough to bring a large selection of her hats for us to try on which was great fun!

The WI had a very successful make and bake stall at the Old Basing Carnival in June and it gave us the opportunity to christen our new gazebo and tables which were purchased with a grant from B&D BC.

For the first time in recent years, some Members braved the heat and took part in the Carnival procession.

The following weekend our gazebo had another outing at the St Mary's summer festival where we embraced the theme of "All creatures Great and Small" with our display of "God's Creatures". We provided a short quiz for the children about the animals on the table.



20 Members then enjoyed a lovely Cream Tea at the Village café at the end of June, thanks to Lesley and her team.

In July the craft group made some coasters and sun-catchers from glass. Our instructor on this occasion was Tina Easton and we were all delighted with the results. We have also done painting and drawing, knitting and in September we are learning crochet.



Our July Member's meeting was our annual garden party which usually takes place in a Member's garden. Unfortunately, after the very hot, dry weather throughout June the date for this coincided with one of the wettest days of the summer. The Committee thanked Member Jill who opened up her house up and 23 of us managed to sit down to a lovely buffet tea created by the Committee. The competition that night was a home-made pudding to share and it was very appropriate that our hostess was the winner! Our August meeting we welcomed David Stiles back to talk to us again. This time he regaled us with stories from his childhood in the 1940s and entertained us with some poetry.

Meanwhile, our quiz team of Christine, Sarah, Fran H, Fran S and myself won the Basingstoke area WI quiz and are through to the final in September in Eastleigh where we will be competing against the best WI teams from Hampshire!

Members have enjoyed a couple of walks from Old Basing to the Willis Museum in town, to see both the Shoe and the Windrush exhibitions. This is always followed by a coffee and sometimes a cake in the museum café!

Our hardworking committee has plans for further trips and events in the future. We will be having our popular stall selling cakes, bakes and craft items at the Basing House Christmas Fair on 25th/26th November, so why don't you pop along and grab a bargain?

If you would like to find out more about our long running and very active group, then please contact our President Sue Stewart on oldbasingpres@hampshirewi.org.uk. We meet on the first Tuesday of every month at the Parish Rooms St Mary's at 7:30pm.





MARK SMITH
PLUMBING & HEATING
Established 1971



01256 782410



All Aspects of Gas, Plumbing & Heating
Kitchen & Bathroom Installations
Solar & Air Source Heat Pumps

info@marksmithplumbing.co.uk
www.marksmithplumbing.co.uk

Showroom & Office
32 Oakley Lane, Oakley, Basingstoke, Hants RG23 7JY




L TITCOMBE & FAMILY

Independent Funeral Directors



Personal, respectful and attentive service

It is usual for people to be unsure of what to do in the immediate aftermath of a bereavement. We will help guide you through the initial steps and provide advice on other matters of importance you may need to think about when someone you know dies.

We are here when you need us most

24 hours a day

All aspects of Funeral Arrangements undertaken

8 Swan Street Kingsclere Newbury RG20 5PJ Tel: 01635 299900	4 Elmwood Parade Basingstoke RG23 8LL Tel: 01256 476366	21a High Street Overton Hampshire RG25 3HB Tel: 01256 771510
---	--	--



www.tmfunerals.co.uk




10% discount for OAPs

Lady
PAINTER & DECORATOR

FREE ESTIMATES
01256 819785 • 07970 454226

20 years of experience

WWW.IANGAYCHIMNEYSWEEP.CO.UK

GREAT CARE TAKEN
PROMPT PERSONAL SERVICE
CALL FOR ADVICE
NOW ALSO FITTING STOVES

IAN GAY
CHIMNEY SWEEP

INFO@IANGAYCHIMNEYSWEEP.CO.UK
TEL: 01256 398887

EST 35 YEARS  **NACS REG 99/483**

Bramley Builders

can do this for you:

- Extensions / Conversions
- New Roofs / Roof Repairs
- All Brickwork & Groundwork
- Period Property Restoration
- Repointing / Rendering
- Driveways
- Plastering
- Block Paving
- Concreting
- Maintenance




Email: davistrevor529@gmail.com
Mobile: 07733 448980



Insurance work undertaken



The Friends Of The Parish Church Of St. Mary's

Old Basing is described as a village but what makes someone who lives here a villager?

A community needs to have a focus, a centre. This can be a village green, a pub, a school, a village shop but in most cases the traditional centre has been the church.

St. Mary's has been the centre of Old Basing since Saxon times and the parish now covers Old Basing and Lychpit. It exists to serve all members of the community. As well as being a place for worship, funerals and weddings it offers a haven of peace and a meeting place for local organisations.

All this comes at a cost. Since the church is a Grade 1 listed building maintaining it is very expensive.

In Norman times the church was rebuilt in stone to a cruciform plan. Although it has been reshaped and extended over the years it still retains the original Norman architecture in the central tower and the main arches of the chancel and choir.

The church was fortunate in the 15th and 16th centuries in having the financial support of the Paulet family who were owners of the imposing Tudor mansion of Basing House and their successors, the Boltons.

During the Civil War Basing House was besieged by Parliamentarian troops. In October 1645 Oliver Cromwell's troops stormed the house and it burnt to the ground. The troops had been using the church as a base and left it in a ruinous state.

Responsibility to rebuild and repair the church in 1645 (as it does now) rested with the parishioners.

They could not afford the cost and an appeal for funds was read out in every parish church in England. Generous donations were received and rebuilding was started.

Over the years there have been many essential repairs and alterations.

In 1990 a massive programme of restoration and renovation took place.

The work was funded by generous donations but it was decided that to help in the ongoing costs of maintaining the fabric of the building an independent charity should be set up.

The Friends of the Parish Church of St. Mary's Old Basing was registered as a charity on 4th December 1995.

The Friends are independent of the church. Their role is to support the maintenance of the fabric of the building by raising money to help towards repair and maintenance. This they do by organising fund raising events.

The following are examples of the ways in which they have helped since 1995:

They have contributed to the cost of installing gas fired boilers.

The church has had an organ since 1839. The present organ was installed in 1878 and was modified in 1939. In 2003 it required a general overhaul and the costs were funded by The Friends and individual donors.

In 2019/20 further works were required on the fabric and The Friends contributed £80,000 to the costs.

In 2022 the church architect recommended that work be carried out on drainage problems. These are being dealt with and the Friends have agreed to underwrite the costs.

The Friends have raised funds in 2022 with a Quiz Night, a Bubbly and Salmon Party, by previewing two plays to be staged at the Edinburgh Fringe Festival, a talk about Jane Austen and with a concert by the Basing Singers and the Basingstoke Male Voice Choir.

In 2023 there has been a Quiz Night, a talk on treasure hunting and the archaeology of Basing House and a garden party.

We are now producing a pantomime. The last pantomime was "Cinderella and The Merry Men" in 2018. We had hoped to provide another before now but the pandemic prevented this.

We are now back on track and "The Tail of Dick Whittington" will be performed in the Village Hall on Saturday 25th November at 2:30pm and 7:30pm and on Sunday 26th November at 4pm.

The cast and crew are committing a great deal of their time to make this community event a great success. Please support them and put this date in your diary. Tickets must be reserved and cost £15 for adults and £8 for children under 12. They will be available from Ian Kershaw **01256 355500** or **igfkershaw@btinternet.com**.

The Friends support is essential to the maintenance of the church building in Old Basing. The Friends' events are managed by a committee and we are in dire need of new committee members. Please consider whether you would be prepared to help the village community by joining us. You will be made most welcome.

If you would like to know more about The Friends please do contact me.

Ian Kershaw



Saturday 7 October 2023
7.30pm at The Anvil

Join us for this annual, fantastic evening of entertainment as local performers showcase their talents to help raise funds for the Mayor's Charity Appeal.

Book now 01256 844244 | anvilarts.org.uk

£19. Over 65s and under 16s £15
(includes £3 booking fee).

All tickets come with a free souvenir programme.



[@basingstokeshow](https://twitter.com/basingstokeshow) [@basingstokevarietyshow](https://facebook.com/basingstokevarietyshow) [@basingstokevarietyshow](https://instagram.com/basingstokevarietyshow)

CROOMBS ELECTRICAL

**ELECTRICAL CONTRACTORS
FIRE PROTECTION SERVICES**



Installations, repairs and maintenance to
industrial, commercial and domestic premises
Fire & Intruder Alarm Systems • Computer Cabling
Lighting & Design • Rewiring • Access Control
Portable Appliance Testing

**24 HOUR
EMERGENCY
SERVICE**

01256 357923
www.croombs.co.uk

www.srhallltd.co.uk

S R Hall Ltd
Building, Plumbing & Heating Contractors

All aspects of domestic plumbing and building
Bathroom and kitchen installations
Boiler installation, service and repair
Central heating servicing
Hot water cylinder replacement

**We now offer a
24 hour call out
service**

*Just a selection of
the services we offer*

01256 765535
enquiries@srhallltd.co.uk

An interesting discovery

In July I spent a day at the Hampshire Record Office in Winchester where I discovered a little book, which some long-standing residents may be familiar with, but I had never seen – Old Basing by Anne Pitcher.

I couldn't find a publication date as it was an ex-library item and the label for the date stamp (remember those? You may have to explain to younger readers) had been stuck over the relevant page. The dates it had been taken from the library were all in the early 1980s. You may have a copy in your bookshelves and there is (supposedly) one copy available on line – for a large number of \$.

The time covered seemed to be from about the mid nineteenth century to World War II, but the little book is not precise about dates, in fact few dates are mentioned. Since it must have been out of print for some time, I think it's safe to print some of the quotes that particularly struck me and which I wrote down.

This is about George Barton – hence Barton's Mill – and the River Loddon.

...lived in the miller's house which was attached to the mill and when the grain was being ground the whole building shook. No one could deny that he lived beside a river that was counted amongst the best in Hampshire's chalk streams. It was a haven for trout and not small ones either, many a fisherman had caught a five pounder, but George could go better than that. He could show visitors a huge old trout, estimated at seven pounds, which lay inside the mill near the big wheel within touch of hand.'

'The River Loddon area offered endless treasure to anyone who was interested in natural history... nothing was more lovely than seeing the water meadows in Spring and early Summer. They were golden first with kingcups, then mimulus and yellow iris while later the dominant colour was pink, with willow herbs, hemp and agrimony.'

If you are knowledgeable about native flowers you may be a bit puzzled by that last sentence. Agrimony is a yellow flower!

But I learned on a course at the Weald and Downland Museum that hemp agrimony looks entirely different, so maybe that last sentence needed editing.



Hemp Agrimony is pink. There was a patch of it along the river close to the little bridge to Basing House in early August.



Wouldn't it be lovely if we could see meadows like that now. I also seriously doubt that we get trout anything like that size. I suppose that is because the Loddon is now so shallow at Barton's Mill due to the water being taken out of the aquifers for our use. You used to see quite big fish if you fed the ducks and they would take some of the food, but I haven't seen that happen in a while.



A picture of the Loddon from the book – apologies for the quality but it was taken on a phone The height of the water is very different from today, though judging from the state of the path it had been very wet when the picture was taken.

This is what the author says about the Recreation Ground. *'Another asset the village prided itself on was the Recreation Ground, which now offered two lawn tennis courts, a good cricket ground, clock golf, swings for the children and an adequate pavilion where teas could be consumed.'*

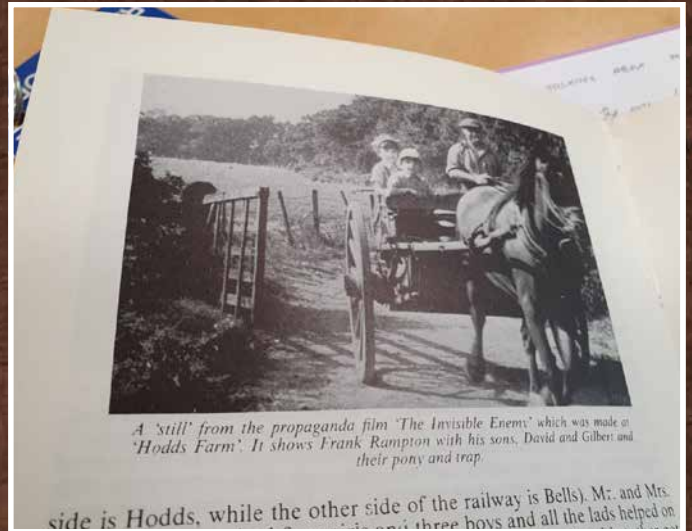
Clock golf? Wikipedia reveals that this consisted of 12 numbers placed in a rough circle and you had to putt your ball from each number to a hole, which was not necessarily in the middle and there could even be obstacles such as bushes. In the 1900s you could buy a kit with the numbers from Hamleys and it seems to have been popular in the inter-war period. Apparently it is mentioned in one of P G Woodhouse's novels.

It continues – and here we have a rare date quoted. *'Then in the summer of 1930, an open-air swimming pool was inaugurated about 400 yards below Lower Mill beside the River Loddon. The bath was greatly prized during the heat wave at the end of that first summer and no less than 4,000 bathes were taken.'*

This is a puzzle. Does this explain the wide section of river just after you get to the water walking from the Newnham road? The location seems right but the author says 'beside the river'. And even if the river was a lot higher then could you actually swim in it? It seems unlikely – does anyone know? Even more intriguing is what happened at Hodd's farm during World War II

'.....it was Hodd's Farm which was the centre of attraction for a film crew had moved in to make – of all things– a propaganda film entitled 'The Invisible Enemy' It was an ideal location, for every month cadets from Sandhurst came to train for service overseas. They really had to rough it and lived under canvas in all weathers These young cadets took part in the making of the film alongside Frank Rampton and his family. The only disappointing thing was they were not allowed to know what the film was for or where it was to be shown, but they were given a few stills from it.'

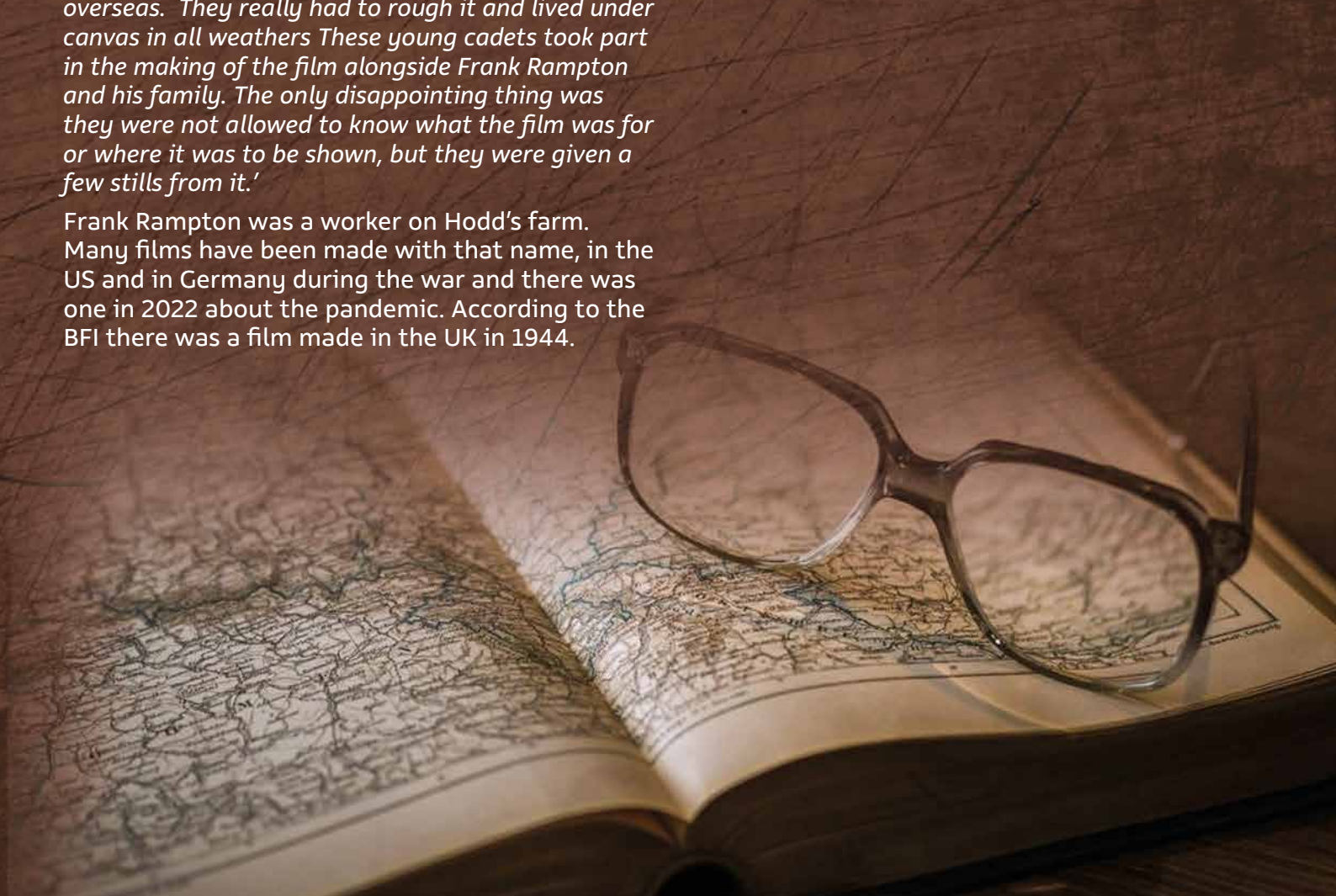
Frank Rampton was a worker on Hodd's farm. Many films have been made with that name, in the US and in Germany during the war and there was one in 2022 about the pandemic. According to the BFI there was a film made in the UK in 1944.



It was non-fiction so presumably a documentary. One of the stills, showing Frank and his family was shown in the book. The other thing that happened towards the end of the war was a 'doodle bug' crashed somewhere at Lodge Farm. It must have been rather off course; possibly it was meant to hit the railway.

It is a fascinating little book. It also tells the story of Sir Edwin Lutyens and the building of Daneshill House. It mentions many people who lived in Old Basing during the late 19th and early 20th century, the setting up of the schools and there is a brief description of Lychpit Farm.

Gill Moore



Old Basing RBL

After the very sad passing of The Queen, our Patron and Monarch, the Club and Branch were determined to make the Coronation celebrations a memorable affair so a day of food, drink and merry-making ensued.

A soggy Saturday morning welcomed some 90 guests into the Jack Morris Hall to enjoy a traditional breakfast fry-up, a number which slightly overwhelmed the voluntary kitchen and serving staff, but they rose to the occasion magnificently to ensure everyone was well fed.

With the weather only worsening as the day drew on, many people chose to stay and watch events unfold in London, enjoy a tipple or two and then tuck into a burger prepared from the second of the chefs' tasks that day, which was to try and manage a barbeque in the rainy conditions! An afternoon cream tea then followed for anyone who had any room left!

So many thanks to all who came and made the event what it was and especially to everyone who helped arrange, cook or serve during the day.

Since then, the RBL Club has continued to hold music and quiz nights and with the club able to screen most popular sporting events, many people have been able to share the excitement of watching football, cricket, F1 or boxing together.

The spacious Jack Morris Hall is host to ballroom/tea dances, judo classes and the Ivy club so there is something for everyone. And as most locals have noticed, we were kindly given permission by the Common Trustees to 'tidy up' the adjoining field and use it for youth football matches and with the pitch being made ready to use by September for the Basing Royals, a team the Club sponsors, we look forward to them attracting many younger faces and their parents to the area.

Going back to the Jack Morris Hall, it is a venue that is open to anyone who may wish to book it for a wedding reception, a birthday, anniversary or perhaps a wake. Please see our hall photographs.

For details, just contact the Club Manager Kyle Merritt in person at the Club, by phone to Tracey Merritt on **07437 016815** or enquire by emailing **secretary@obrbl.club**

THE 2022/23 POPPY APPEAL

Not everyone embraces technology changes but with our Poppy Appeal team acquiring card readers in the past 2 years, the Appeal annual totals have increased markedly since carrying



cash has become less popular. That's not to say we don't want your coins, far from it, but our collectors who stand by shop fronts during the Remembrance period nowadays certainly see more card transactions or notes being donated and peoples' generosity still staggers us. The Poppy FY ends on September 30th so as you read this we will almost be there. At the time of writing (24/7), the total for Old Basing, Lychpit and Hook (for whom we are responsible) stands at £27,368 which is brilliant.

So, in October we return to zero and start again and Tim Russell, our Poppy Appeal Organiser, would love to hear from you if you would like to help collect for us this year, by either putting a Poppy collecting box in your shop or business or volunteering to collect outside Tesco Chineham, Hook or the new Sainsburys store in Hook. Collecting will run from 9am through until 6pm, from Saturday 4th until 11th November and you can help us with as much or as little time as you can spare.

You can find out more by contacting Tim on **07772 883964** or **tim.russell1888@gmail.com**

To launch Remembrance week on November 4th, we will again be hosting our annual Black Tie dinner dance and limited tickets are now available at £30.

Contact **oldbasing.secretary@rbl.community**

Rick Bourne

07900 648675

rickbourne@yahoo.com



Expert
care for
40 years

care UK

With over 150 homes, we offer exceptional care across the UK. We're proud to have supported residents and their families for over 40 years, delivering tailored care that supports each individual to live life to the full.

**If you're considering care call
01256 809689.**



Trusted to care

**Dashwood Manor care home
Basingstoke
careuk.com/dashwood-manor**

Spencer & Peyton Ltd

Funeral Directors and Monumental Masons
24 hours a day
3rd Generation family
owned and run since 1961



**Pre-paid funeral plans
discussed without obligation**

**380 Worting Road
Basingstoke, RG22 5DZ
01256 323165**

**7 London Road
Hook, RG27 9DY
01256 761717**

spencerandpeyton@btconnect.com
www.spencerandpeyton.co.uk

Trading
Standards
approved

ON SITE FLORIST

01256 355556
www.theflowergirlflorist.co.uk

**The
Flower
Girl**



**Specialising in MOTs,
servicing and general
repairs for cars,
motorbikes, vans and
other light goods vehicles**

MOT TESTS

We have a dedicated MOT bay, and are approved to test Class I+II mopeds, motorcycles + motorcycle companions, Class IV Cars, vans + light commercials up to 3000kg, including quads

SERVICING & REPAIRS

We have a well equipped service bay with modern computerised Bosch diagnostic tools, providing servicing for all makes and models and fault diagnosis for computerised vehicle systems, plus engine repairs, clutch, brake, exhaust repairs/replacements, MOT repairs and body repairs

MOTORBIKES

Servicing for leading makes and models, fault code reading, Insurance/accident repairs, MOT repairs and paintwork



AA Certified

01256 810766 | www.rtgaiger.co.uk

Units 1 & 10, The Beresford Centre,
Wade Road, Basingstoke RG24 8FA

Village Café

September marks the end of summer holidays for many with children going back to school, when sun tans fade but the memories we've made will last and I am ever hopeful for warm sunny days before we head into the Autumn.

I always think September is a month full of promise, there can still be sunshine and evening cocktails, and as we watch, the leaves gently start to take on their autumnal hues of gold and red, bringing colour to the shortening days.

Looking back over the past months, the cafe has been as popular as ever, from our "Baking you Smile" initiative to being able to support the local community with a few donations. We have donated to the Junior School to enable new sports and games equipment to be purchased for the children, supplied the Ivy Club with an afternoon tea, hosted the lovely ladies from the WI for an afternoon tea and made a donation to the Village Hall Nursery school.

The cafe were really happy to support the "All things bright and beautiful" festival at St Mary's Church in June by baking some colourful cakes for all to enjoy.

The donations we have made have only been possible because of the amazing support our customers continue to show by coming along on a Friday afternoon with friends and family for a drink and some fabulous home made cake. We cannot thank you enough, it's always lovely to see you all and we are proud to be able to make a small difference within the community.

Our current fundraising is for St Michaels Hospice and we have almost reached our current target. We are raising money to buy a syringe driver, this is a small battery powered device that enables a steady stream of medication to be administered

to patients via a small tube inserted under the skin. These provide much needed pain relief to many and we know it will make a difference to those who need it. We are likely to extend our fundraising for the hospice to the end of the year and purchase other equipment which is desperately needed to help patients.

The cafe reopens its doors on Friday 8th September following our summer break and we hope to see many of you joining us on Friday afternoons, 2-4pm in the Parish room, over the coming months. Keep your eyes open for future events via our Facebook page and in the monthly Basinga magazine.

I cannot end this article without mentioning some incredibly sad news. Many of you will have heard of the tragic loss suffered by Kate Tuck and her son, Felix recently. To lose someone you love is heartbreaking but to lose them in tragic circumstances makes it harder to bear. Kate is a tireless supporter of the community and passionate about local issues, she is a great friend of the cafe and also, a personal one of many of us. I want to pass on our love and deepest condolences to both Kate and Felix, I know your journey has taken a different turn now but we are all here to support you in any way we can.

Deborah Thorne



FREE Online Courses with Basingstoke College of Technology

Boost your C.V. and show your dedication to continuous growth.

Our flexible distance learning courses are designed to fit around your schedule and can be studied at your own pace. Dive into various fields, expand your knowledge, and gain the valuable skills employers are looking for. And thanks to government funding*, you can access these courses for free.

Each course comes with a personal tutor who will guide you every step of the way so that you get the support you need to succeed.

Whether you're into business, health and social care, or education, BCoT offers over 50 courses.

Don't miss out on the chance to enhance your skills and advance your career. Enrol today and unlock your true potential.

www.bcot.ac.uk/online-and-distance-learning

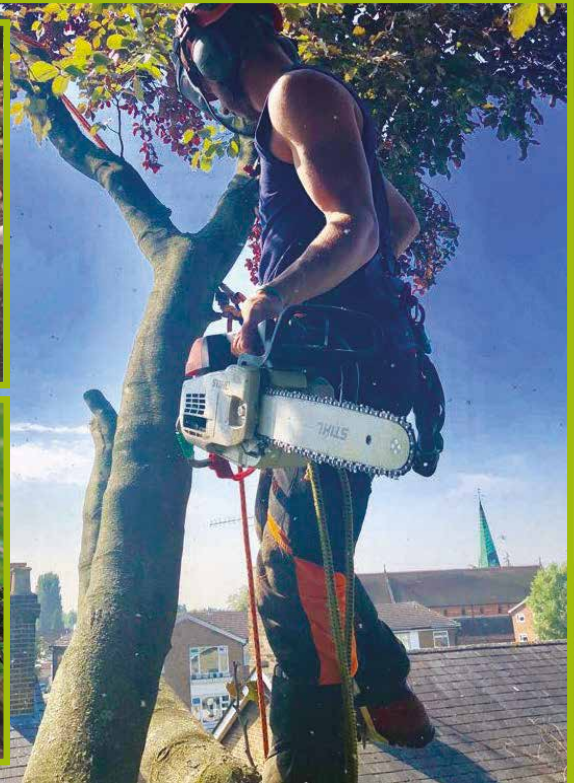
**subject to availability*



Specialist Tree Services

Tree Surgery
Hedge Maintenance
Stump Grinding
Garden Mulch
10 million insurance

Checkatrade.com



Call for a free no obligation quotation

0118 973 3943

Email: info@jdbcontractors.co.uk

Old Basing VILLAGE SHOP.

Groceries – Quality Fresh Produce – Snack Foods – Soft Drinks
 Tobacco Products – Toiletries – Newspapers – Magazines

We also deliver
 newspapers to your home
 with our daily paper round

T: 01256 464020
 E: oldbasingshop@gmail.com



@Oldbasingvillageshop



PHOENIX FENCING

SUPPLIES LTD

Are you looking for fencing and decking material in Basingstoke and throughout the surrounding areas? If so, why not pay a visit to Phoenix Fencing Supplies Ltd? We stock a large range of high quality European panels, decking & fence panels.



behind Cemex Concrete
 off Gresley Road
 Swing Swang Lane
 Basingstoke RG24 8NR

01256 841199

sales@phoenixfencingsupplies.co.uk
www.phoenixfencingsupplies.co.uk

Barkerz

Dog Grooming & Pet Services



- 🐾 Dog Grooming 🐾 Wash & Fluff Dry 🐾
- 🐾 De-shedding 🐾 Hand Stripping 🐾 De-matting 🐾 Brushing
- 🐾 Nail Clipping 🐾 Tick and Flea Removal 🐾 'Spot On' Treatment 🐾
- 🐾 Ear Cleaning 🐾 Puppy Bath 🐾 FURminator Shed-less Treatment 🐾
- 🐾 Refreshing Spritz 🐾 Dog Walking 🐾 Home Bath Visits 🐾
- 🐾 New Owner Training 🐾 Vet Visits 🐾 Pop-in Visits 🐾

📞 01256 516251
 07727 618669

🌐 www.barkerz.co.uk

✉ barkerzgrooming@gmail.com

📍 Based in Chineham RG24

Access Care

Live-in Care Experts Since 1994

BESPOKE, PRIVATE, LIVE-IN CARE SPECIALISTS

We arrange the finest, expertly qualified Carers to
 live with people in their own home.



5 STAR REVIEWS

Arrange a free, no obligation, private meeting in
 the comfort of your own home.

01264 319 399

WWW.ACCESS-CARE.CO.UK
HELLO@ACCESS-CARE.CO.UK



F.O.O.B.S. Trail and Fun Runs 2023

10K, 5K and 2K distances

Sunday 8th October 2023

Old Basing Recreation Ground

REGISTER ONLINE AT <https://foobs.weebly.com>



THE COMPLETE TREE SERVICE

Teams all over Surrey, Hampshire & Berkshire

Fully trained & certified staff
£10m Public Liability Insurance
Health & Safety focused
25 years' experience
We guarantee we can help
Call for professional, friendly advice

- Tree removal, thinning & lifting
- Scrub clearance & hedge trimming
- Residential & commercial work
- Stumps removed

01256 763 162 • 01252 624 702

Images, video footage, client lists and more at: www.cedardale.co.uk

Checkatrade.com Where reputation matters



AT-HOME
Plumbing & Heating Solutions

Is your boiler **ready** for winter?

Don't risk it. Call us:

Vaillant ADVANCE Installer

01256 326610/07756 139562
info@at-homeplumbers.co.uk
www.at-homeplumbers.co.uk

safe REGISTERED 651154



CommunityAd
communityad.co.uk

Distributed throughout **Old Basing & Lychpit** to **3,000** homes **quarterly**

Why Advertise With Us?

- Hand-distributed to every home
- Attract new customers to grow your business
- Free online business listing with every advert
- Build brand recognition within your local community
- 90% repeat advertising rate
- Available in print and online

Over 6,700 followers on Facebook

Over 3,500 followers on Instagram

Over 2,000 followers on Twitter

Contact us to find out more or to book an advert
01843 834160 | info@communityad.co.uk

Autumn Edition
Old Basing & Lychpit
Parish Council Community Newsletter
AUTUMN 2023

EST.

HM

1987

HAVEN MEMORIALS

MONUMENTAL MASONS

From the Quarry to the Churchyard, we help you plan and create the perfect Memorial for your loved one. We opened our doors in 1987 and our family have been serving the local community ever since, we strive to provide the smoothest, stress-free service in this most difficult time for you.

On Grove Farm in Crookham Village we have our Workshop and Office which our clients are always welcome to visit, view materials, samples of lettering and shapes and sizes of memorials. We also have a high street branch located on Wote Street in Basingstoke which has plenty to view too. Each of our Clients gets a 1-1 appointment with one of our specialists who will be able to answer any questions you may have.

All materials we use are of the highest quality, sourced from all different countries around the world, whether its Granite quarried from the heart on Cornwall or Marble quarried from the Mountains of Carrara in Italy. We take such pride in supplying the highest standard of material possible.

We have an incredibly talented team which can carve any design, motif, or heraldry within reason. All designs are hand-finished, we take great pride in each and every one we create.

We also provide renovation services, repairing, re-painting, cleaning and much more, so if your loved ones memorial is in need of a freshen up. Furthermore, we have our very own Maintenance Service which involves visiting your loved ones Memorial twice a year to provide a professional clean so that when you visit, the Memorial will be looking its best, if this interests you contact one of our specialists today.

Traditional masonry techniques are still used at Haven Memorials, all our Monuments are installed by hand by our very own team into the Cemetery or Churchyard to assure a professionally completed product. All of our installation team are registered qualified memorial fixers who have accomplished full training through the British governing body.

If you require a helping hand while you are looking for a Memorial, look no further than Haven Memorials. Contact and make an appointment with one of our Memorial Specialists today.

Fleet

Unit 12, Barn Workshops, Grove Farm,
Crookham Village, GU51 5RX
01252 811691

Basingstoke

6 Wote Street, RG21 7NW
01256 811829

admin@havenstone.co.uk
www.havenmemorials.co.uk





Superb aerial photos taken by a member of Old Basing Tennis Club showing the Tennis Club, recreation ground and cricket nets and the allotments

A Busy Summer at Old Basing Tennis Club

The summer seems to have flown by with lots of great tennis events and activities happening this year at our club, set on the Old Basing Recreation Ground opposite the allotments on Riley Lane.

We have benches outside the courts which often have people stopping and sitting to watch some great tennis as they are passing by.

The Open Social Evenings on the last Friday of every month have been busy. Members of the public are invited to come along and have a hit with our members and after play there is a social get together where we have a drink, snack and chat.

On 2 July we had a stall at the Friends of Old Basing Schools Summer Fair. Our tennis game, where you had to hit a ball through different sized holes to earn points, was a real 'hit' with youngsters and parents alike with over 100 people having a go. The two highest scorers were given a fabulous prize of free entry to a group coaching session over the summer. We're looking forward to supporting the schools again next year.

On Friday afternoons, we have been doing Junior Coaching for ages 5 to 14. These sessions have proved very popular with up to 16 youngsters taking part each week and all honing their skills,

hoping to be a future Andy Murray or Katie Boulter. Drills night on Monday evenings for adults is also very popular. Both coaching and drills are open to members and non-members, see our website for how to book.

During Wimbledon fortnight the club offered free use of Court 1 which proved very popular and allowed adults and children to have a go at playing tennis, rather than just watching it on TV. After Wimbledon this court can still be used by members of the public for a very small fee of £2.50 per half hour.

Two very enjoyable American Tournaments with 16 entrants were held in May and July, luckily on sunny afternoons. Mixing up partners and opponents for a set number of games throughout the afternoon gave everyone a chance and the man and lady with the most games at the end were the winners. Tea, coffee and cake kept all players going throughout the afternoon and a barbecue in the evening after play had finished rounded off the day. A great time was had by all.



The tennis Club's stall at the local school summer fete

For the first time in many years, we have entered seven teams into the Basingstoke League – 3 men's, 2 ladies and 2 mixed teams. The teams play in Division One, Division Two and Division Three. This allows many members to play more competitive tennis, to meet and play against members of other clubs around the area. Our teams are performing well with a good number of wins for them so far.

This year we have had a bumper number of entrants to our Summer Tournament, which has seven events, Men's or Ladies Singles, Men's or Ladies Doubles, Mixed Doubles and Handicap Men's and Ladies Doubles. The draw was made in May and matches played throughout the summer, culminating in our Finals' Day on Saturday 2 September.

This article was written before the event, but we expect great play on all four courts throughout the day, followed by a trophy presentation ceremony and barbeque. We'll let you know who the winners were in our winter article.

How you can play tennis. If you or your family fancy a game of tennis come along to one of our club sessions to try it out and meet some of our friendly members. These are held on Tuesday and Friday evenings from 6pm, Wednesday afternoons from 2pm and Sunday mornings from 10am. As a member, you can play whenever you want, using our booking system to ensure that you have a court to play on when you arrive. Non-members can play on Court 1 under our Pay & Play offering and book a court via our website.

If you want to find out more contact us by email at obtc.information@gmail.com or see our website or Facebook page.

We hope to see you on court soon.
Old Basing Tennis Club, Riley Lane, Old Basing
RG24 7DH

Creative Wood Floors

Flooring & Wood Care Products

Solid Wood flooring
Engineered Wood flooring
Laminates and Luxury Vinyl Tile (LVT)
Supply only or supplied and fitted
Free expert guidance and advice
Free home visits



Official stockists of interior and exterior hard wax oils for various wood types

Order online - Quote CWF10 for 10% discount off oils and lacquers (min spend £50) or buy instore



Visit our showroom at
Unit 11, The Hassocks Wood Workshops,
Stroudley Road,
Basingstoke RG24 8UQ

T: 01256 841353 www.creative-wood-floors.co.uk

Enhance your outdoor living space



Verandas • Glass Rooms • Awnings • Pergolas
Carports • Solar Garage Doors & Shutters



SBI Ltd 0800 0742 721 sbiproducts.co.uk

News from Old Basing D of E Award Centre

Last summer saw our Duke of Edinburgh Gold team complete a gruelling 100 mile expedition from Winchester to Eastbourne via the South Downs Way over 6 days.

This was possible by joining the practice expedition and actual expedition into one journey. Even so this required an average of 16 –17 miles being covered on foot with full kit per day. Well done to them for achieving this. Our bronze team also did well with some going on to silver this year. By the time you read this, they will be on the isle of Wight on a 3 day expedition walking and exploring on their assessed expedition.

The past year has unfortunately been very subdued with extremely low numbers of participants, mainly we feel due to the effects of COVID when D of E went into shutdown and people readjusting to the "latest norm" where socialising seems to have taken a back seat.

It was therefore with trepidation that we recently held our open evening at the Beddington Centre to hopefully attract new participants for our next season starting in September. We all had a little wager on numbers, from 3–4 bronze to perhaps a couple of teams of 5 each. With schools now taking the majority of D of E participants, open centres have felt the pinch with much lower numbers which is a shame because only open centres are able to cater for a participants D of E experience from bronze through to gold.



Gold Team at Birling Gap before walking over the Seven Sisters country park.

We were somewhat astounded then when we had over 40 parents and young people turn up that open evening to hear about what we could offer!

We are now looking to start the new season with 4 bronze teams, 1 silver and possibly 2 Gold teams!

Looks like we will be busy but more to the point, D of E is very much still alive and with HRH Prince Edward stepping into his father shoes, long may it continue.

For more information and possible spaces, we can be contacted at oldbasing.dofe@btinternet.com



The Finish at Eastbourne, 100 plus miles later. Well done Jamie, Pete, Sam, Alfie and Mikey.



Amberwood designs

WITH A WEALTH OF EXPERIENCE,
WE HAVE THE SKILLS TO HELP

amberwooddesigns.co.uk



Windows, Doors & Conservatories in PVC, Aluminium, Timber
and Solid Replacement Roofs for Conservatories.

So What Is Different About Amberwood?

It's straight-forward really, just honest advice from renowned experts in their field offering the highest quality PVC, Aluminium and Timber products at the very best prices. The philosophy of Amberwood Designs is simple. If you offer the best advice, use the very best products, offer the very best prices, use the very best installers and keep your overheads low, then the customer will be delighted and the company will prosper.

Show Site: Open Mon-Fri 8am-5pm

Ground Floor, Estate Offices, Youngs Ind. Estate,
Paices Hill, Aldermaston, Berkshire, RG7 4PW

Tel: **01189 820300** Mob: **07553 361012**

office@amberwooddesigns.co.uk





MONSTER TREE SERVICES

NO JOB TOO
BIG OR SMALL

SERVICES

- Domestic and Commercial Tree Work
- Tree Pruning, Thinning and Maintenance
- Tree Felling and Limb Removal
- Stump and Root Removal
- Site Clearance
- Hedge Cutting
- Logs and Firewood Delivery

Contact us for a free no obligation quote or consultation
t: 07872 567381 w: www.monstertreeservices.co.uk
e: ross.stickland@monstertreeservices.co.uk

City & Guilds
NPTC

Follow Us





MARK TRODD

MVS Ltd



MOT CENTRE

MOT • Servicing • Vehicle Diagnostics

01256 329350

Unit 7, Roentgen Court, Roentgen Road,
Basingstoke, Hampshire RG24 8NT



ACE

Locksmith services

AFFORDABLE . CARING . EFFICIENT

Your local locksmith based in Basingstoke, serving surrounding areas.

Door Repairs, UPVC Locks, Moving Home, Break-in Repairs,
Eviction Assistance, Security Upgrades, Home Protection.

24/7 Call Outs, Rapid Response Rate.




07897 380241 | 01256 278241

info@ace247.co.uk | www.ace247.co.uk



SPHERE

ENERGY SOLUTIONS

Solar PV

Battery Storage

JA Solar
Solar Edge
Tesla Powerwall
Pylontech

MyEnergi
Solis
QCell
Solax

Charge your EV with your PV



0800 56 77 629
www.sphereenergy.co.uk

Unleashing the Power of Savings with Solar Panels

Solar panels are more than just an eco-friendly trend—they're a wise financial investment that can yield substantial long-term benefits.

As renewable energy continues to gain momentum, homeowners and businesses are increasingly recognising the significant financial advantages of going solar.

Why should you get solar panels installed?

Reduced Energy Bills

By generating your own clean and renewable energy, you can significantly decrease your reliance on the grid. This results in lower energy bills, especially when combined with The Smart Export Guarantee (SEG). According to the Energy Saving Trust solar power can reduce your energy bills by £610 (Based on 3.5kWp system / 10 panels) a year! Alongside this, your energy costs become more predictable and less susceptible to market fluctuations. This stability offers financial security, allowing you to allocate your resources more effectively.

Return on Investment (ROI)

Installing solar panels is an investment that offers attractive returns. While the upfront costs may seem significant, solar panels pay for themselves through energy savings over their lifespan. In many cases, homeowners can recoup their initial investment within 5 to 10 years and enjoy decades of free or significantly reduced energy costs.

Government Incentives and Tax Benefits

The Government recognises the importance of promoting renewable energy adoption and provide incentives to offset the cost of installing solar panels. These incentives include grants and zero rate VAT.

Increased Property Value

Studies have shown that homes equipped with solar energy systems sell at higher prices. Buyers are increasingly attracted to energy-efficient homes with reduced operating costs - they demonstrate a commitment to sustainability and environmental responsibility, making your property more appealing in the real estate market.

Long Lifespan and Low Maintenance

Solar panels are designed to be durable and require minimal maintenance – they are built to withstand the elements and typically come with warranties ranging 20 – 25 years. Routine inspections and occasional cleaning are usually sufficient to keep them operating at peak performance, translating to long-term financial savings.

Additional Revenue Streams

Depending on your location, you may have opportunities to generate additional revenue through solar panel installations. The Smart Export Guarantee (SEG) enables you to sell excess electricity back to the grid, earning income for the energy you produce. Furthermore, in some regions, renewable energy credits or certificates can be sold, allowing you to monetize the environmental benefits of your solar energy production.



0800 56 77 629
www.sphereenergy.co.uk



Old Basing Scouts & Guides update

The Community of Old Basing & Lychpit is a strong and flourishing place to raise young people because we have people of all ages and abilities who are willing to lead and support on many projects that are engaging and inclusive.

We all know that our youngsters are inspired to do great things by the philanthropic efforts of their community, the group activities they actively engage in & the leadership of those that run and support those groups. Given that we have many sporting groups, a DofE open centre, the cadets, the RBL band, groups that help us develop artistic talents, language skills, conservation projects or historical knowledge, plus religious groups, schools and a full complement of Baden Powell groups we have much that our youngsters can draw from as they develop. All that is good in our community has been exemplified by those that established such groups and created spaces for the common good as well as those that keep these things running over many years.

Keeping this special place at the centre of our thriving community is a challenge welcomed by those that routinely work behind the scenes as well as those who present as figureheads; they all keep these groups thriving, inclusive and engaging. But that is not enough. We all need to celebrate what they do, talk about what we want and seek out ways to make those things happen. Some of the changes we crave require funding but much can be done by a combining as a committed group who step up when asked. The perfect illustration of that in our community can be exemplified by those that created our Village Carnival, those that created the fiftieth event this year and all those that delivered the carnivals over the intervening years.

Scouting and Guiding in our village is something that holds a special place for me and my family that we share with many other families that have been here for much longer than us. It is an established group that supports some 200 young people in their quest to learn new skills, enjoy new ways to have fun and create a better future for their community. This was all made possible because the land we hold in trust was transferred to us from Lord & Lady Camrose on 12th December 1950. We continue to fulfil their wish for the Trustees to manage the land in perpetuity as a meeting place for the benefit of 18th Basingstoke (Old Basing) Scouts and 1st Old Basing Guide Company (plus associated junior groups, sections and companies).

The Trustees are doing their best to transform the space into an exciting asset for the young people of our village. Our ultimate aim is to get the new hall built in accordance with the planning consent we have in hand. In working towards that goal we have been seeking to connect with people that will help in the process of submitting grant funding applications. We had a strong response to our initial appeal in the Basinga I am in the process of creating a plan and enabling file sharing before pressing on with the next wave of applications. If you would like to help in this effort please contact me via the address below.

Thanks to the CIL Fund support from Old Basing & Lychpit Parish Council we are now able to repair some of the fence line and enhance the space with mains connected toilets. This work will bring the site into more regular use for outdoor activities during term time. We will also be creating a campfire space with hard and soft landscaping as a new feature which we hope will draw more interest in our site.

This exciting development leads us to my second invitation. This time it is for those that would relish some physical activity. We are planning to undertake work on our field to add the toilets and fire pit in preparation for activities in the autumn term. The work of constructing our fire pit & laying a base for mains connected toilets will be much easier now that we can afford to hire a digger for most of the heavy lifting! We already had the material for the fire pit but the construction work will be more fun with a few more hands to help Graham and myself. We also need to weed the borders and chip some small branches & create woodchip paths so there is work for all builds and abilities. We will be undertaking the work from Saturday 16th until Sunday 24th September (all nine days) and will welcome any volunteers who can join for any of those days.

If you are able to come and join in the work party then please call my mobile **07766 985108** or write to our email account

fundraising4newhut@gmail.com

so that we can advise on how you could help.

Andy Molloy

(Trustee for Old Basing Scouts & Guides Hall)

[@oldbasingtweets](https://twitter.com/oldbasingtweets)

Old Basing & Lychpit Parish Council

Year ending 31 March 2023

BALANCE SHEET:

Current Assets

Debtors	£12,504
Prepayments	£2,027
Bank and Cash	<u>£403,524</u>
	£418,055

Current Liabilities

Creditors	(£35,653)
	<u>£ 382,402</u>

General Fund

Income & Expenditure Account	£228,451
	£153,951
	<u>£ 382,402</u>

Income & Expenditure Account

Income:

Precept	£208,509
Interest Received	£312
Administrative	£218,678
Recreation	£18,815
Burial	£9,500
Allotment Rents	£5,596
Lychpit Hall	£25,012
Groundsmans Cottage	£12,881
Grant Aid – Revenue/Maintenance	£34,260
	<u>£533,563</u>

Expenditure:

Administration	£137,218
Street Lights	£2,297
Recreation	£132,491
Allotments	£13,389
Cemetery	£11,755
Lychpit Hall	£26,664
Other Buildings	£38,581
Capital – Schemes	£17,217
	<u>£379,612 (£379,612)</u>

Net Income/(Expenditure) for the year £ 153,951

Reserves

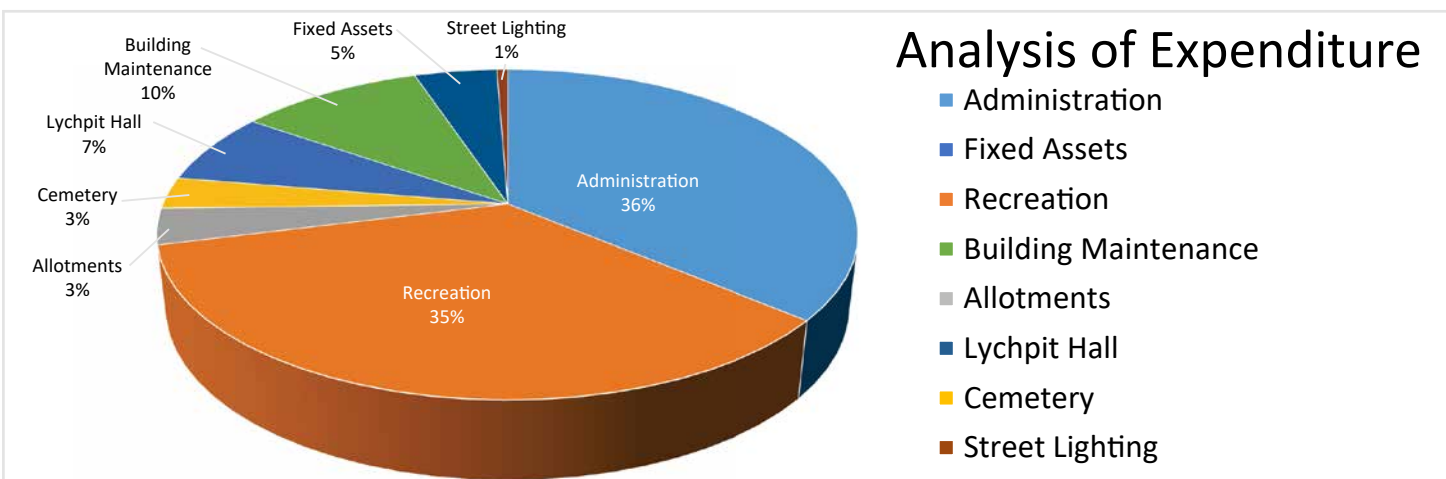
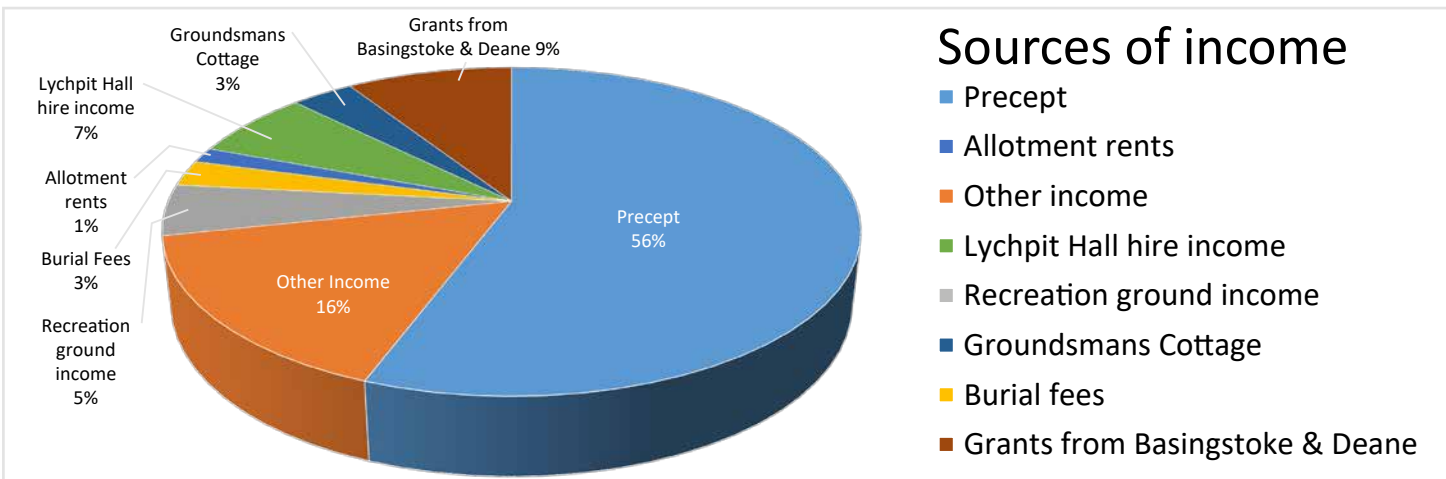
Net Income/(Expenditure) for the year	£153,951
Transfers from EarMarked Reserves	(£46,933)
Net Income/(Expenditure) for the year to General Reserves	<u>£107,018</u>

General Fund	
Opening Balance	£74,894
From period	£8,876
	<u>£83,770</u>

Earmarked Reserve Opening Balance	£153,557
From period	
	<u>£298,632</u>

TOTAL RESERVES

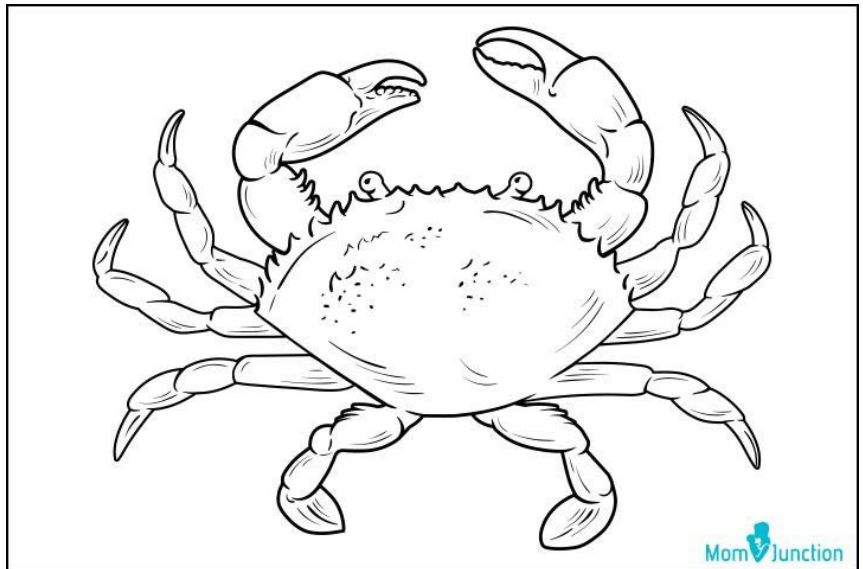
£382,402



Children's CoRner

Colour in the Crab

Did you go to the seaside for your holiday? Did you see a crab there or perhaps caught one in a rockpool? Have a go at colouring in this one using oranges and browns or design your own.
HAVE FUN!!



Animal & Creature Quiz

Fill in the blanks to spell the name of a bird or animal you might see around the village.

on T _ _ _sh

H _ _ _e _ _ g

S _rr _ _

_ea _ _l

_l _ w _o _m

Gr _ _ _ho _ _e _

W _ _d _i _eo _

What creature or flower follows the colour?

Black _ _ _ _

Orange _ _ _ _

Red _ _ _ _

Blue _ _ _ _

Green _ _ _ _ _ _ _ _

Yellow _ _ _ _ _ _

Gold _ _ _ _ _

Red _ _ _ _ _ _

White _ _ _ _ _ _ _ _

FUNNY FACTS !

Did you know??

A baby Puffin is called a Puffling!

An Ostriches eye is bigger than its brain!

A group of Giraffes is called a tower!

An Octopus has nine hearts!

An Ant can lift 50 times its own weight!

A Hummingbird can fly backwards!

A Snail can sleep for 3 years!

A Shark has NO bones!

An Elephant is the only animal that cannot jump!

FOREMOST TREE SURGEONS



CALL FOR YOUR FREE ESTIMATE

PRIVATE & DOMESTIC ENQUIRIES

Tree Felling, Tree Pruning, Stump Grinding, Tree Thinning,
Tree Reductions, Landscaping and Fencing.

COMMERCIAL ENQUIRIES

Site Clearance, Developers, Electricity Board Approved,
Council Approved.

OTHER SERVICES

Tree Surveys, Tree Reports, Tree Inspections,
Technical Plans, Logs and Chippings Supplied.

ALL WORK GUARANTEED
FULL EMPLOYERS' LIABILITY. £10 MILLION COVER
NCH, ARB & NPTC TRAINED STAFF



British
Association
of Landscape
Industries



Acclaim
Accreditation



as recognised by
SAFETY
SCHEMES IN
PROCUREMENT



Supplier No. 060712



CALL TODAY ON 01256 814602

Greenacres Nursery, Aldermaston Road, Pamber Green, Tadley, Hants, RG26 3AF

info@foremosttreesurgeons.co.uk

foremosttreesurgeons.co.uk



The National Garden Scheme – In Hampshire

In the Summer edition I promoted a garden pretty local to Basingstoke – the Mill House at Sherborne St John.

I'm pleased to say that the opening did not disappoint, with a total of 412 visitors over two days, raising in excess of £2,000.00 for the National Garden Scheme. This charity raised over £3.1 million in 2022 for our beneficiaries such as Marie Curie, Hospice UK, Parkinson's UK and Macmillan Cancer Support. Regarding another beneficiary Maggie's.....

In June the President of the National Garden Scheme, Dame Mary Berry joined guests at a garden party at cancer support centre – Maggie's in Oxford to celebrate the next stage in the two charities' partnership.



Dame Mary Berry with Claire Marriott– Head of Maggie's Oxford(L) & George Plumtre Chief Executive NGS (R)

The National Garden Scheme is aiming to raise £1 million over 10 years to support people with cancer on top of the £420,000 that the gardening charity has already donated to Maggie's.

The event was hosted in the garden of Maggie's Oxford, which was designed by Pip Morrison, and has recently received funding from the National Garden Scheme for updates and improvements.

Since 2018, the National Garden Scheme has donated £420,000 to Maggie's through our Gardens and Health funding programme. This generous support has enabled Maggie's to create beautiful gardens at its centres in Leeds, Southampton and Oxford, and improve gardens at Maggie's Newcastle, and Maggie's Cheltenham. The ongoing 10-year partnership will help the charity with the upkeep of current centre gardens and provide new gardens at upcoming centres, including Northampton.

If you were ever in any doubt as to why you should support the National Garden Scheme in its aims

to raise much needed funds for all our charities, then this next short video should show you why:- <https://youtu.be/ch7OlWs3Sww>

One of the ways in which you can support our vital work, is by visiting one of our Open Gardens for an affordable afternoon out, OR by booking an exclusive visit with a group, giving you the undivided attention of the garden owner.

Still to open this year are a couple of gardens in opposite directions from Old Basing and around 45 minutes drive.

REDENHAM PARK – Andover, SP11 9AQ



Opening: Friday 22nd September 2pm to 5pm
Admission: £6.00 children £2.50 Pre-book OR cash on the day. Refreshments: Cream teas & home-made teas

Redenham Park, built in 1784, has been the home since 1976 of Olivia Clark. The world is kept at bay by a belt of ancient woodland and beyond lies a bowl of sheep strewn parkland with the house at its centre. Lady Clark consulted Rupert Golby last year on the redesign of two large beds on the way into the Rose Garden. The garden in high summer is an abundance of roses and perennials. The formal rose garden is planted with mainly white-flowered roses and a foam of Alchemilla and Echinacea in the paving. An arch, covered by Paul's Himalayan Musk, leads through to the main borders which peak in late summer. After a calm green interlude, with an avenue of pleached limes and a croquet lawn with a tapestry hedge, a gate opens into a garden with espaliered pears and apples and a mass of scented roses, shrubs and perennial planting

which surrounds the swimming pool. A door in the thatched cobb wall opens onto an immaculate kitchen garden with impressive glasshouses.

<https://findagarden.ngs.org.uk/garden/35194/redenham-park-house>

WHEATLEY HOUSE – Wheatley Lane, Kingsley, Bordon, GU35 9PA



Opening: Sunday 1st October 2pm to 5pm

Admission: £5.00 children free. Cash or

Contactless Payments

Refreshments: Light Refreshments available

Wheatley House was originally a C16 farmhouse, surrounded by hop fields and orchards. It is now a Grade II listed building with elegant gothic style windows, an unusual feature of the late C18 extension. Situated on a rural hilltop with extensive views over Alice Holt Forest and the South Downs, the terraced, south-facing lawns proved a challenging canvas for artist Susannah Adlington who moved here with her family in 1981 to start 'painting' a garden. Over the years Susannah, who admits to being much more of an artist than a plantswoman, has had great fun creating a garden full of interesting and unusual planting combinations. She is helped by her enthusiastic part-time gardener, Ivan, and husband Michael mows the lawns! The sweeping, mixed borders are particularly attractive with spectacular colour throughout the season. The black, white and red border is very popular with visitors. 'We are very lucky on several counts', says Susannah, 'as we are surrounded by old brick and stone walls (keeping out the destructive elements of wildlife!) and we have excellent neutral upper greensand soil and a large Victorian lean-to greenhouse, enabling us to

over-winter tender perennials and take cuttings.

<https://findagarden.ngs.org.uk/garden/12960/wheatley-house>

I hope that you will find something of interest in this Newsletter.

Best Wishes

Pat Beagley

(Head of Publicity)

National Garden Scheme – Hampshire

pat.beagley@ngs.org.uk



Childrens Corner answers:

Quiz 1 – SONG THRUSH, HEDGEHOG, SPARROW, WEASEL, SLOW WORM, GRASSHOPPER, WOOD PIGEON

Quiz 2– BLACK BIRD, ORANGE TIP, RED KITE, BLUEBELL GREEN WOODPECKER, YELLOW HAMMER, GOLD FINCH RED ADMIRAL, WHITE TAILED EAGLE,

Celebrate birthdays at Basingstoke Leisure Park

Planning a memorable and fun-filled party for your little ones can be a challenge but with so many great options available at Basingstoke Leisure Park, it doesn't have to be a headache.

Hollywood Bowl offers party packages including kids bowling and food and drink but if a pool party is more your child's thing then Basingstoke Aquadrome has a number of different packages from enjoying the lagoon, a special swim party in the 20 metre pools to VIP packages. Little knights can enjoy an epic crazy golf adventure at Knights Realm where parties are available for a maximum of 15 children or with private hire you can host up to 40.

If you want something a bit more thrilling, experience private and exclusive flight sessions for up to 13 people at iFLY and have an 'out of this world' party at Planet Ice. Its party package offers an ice skating session, including skate hire and food.

For a more relaxed celebration take a trip to Odeon cinema and settle in and watch the latest blockbuster or visit the Spruce Goose which can host kids' parties, including a three-course meal and drink.

For more information about Basingstoke Leisure Park visit www.basingstokeleisurepark.co.uk



Old Basing Village Hall Dog Show

The Hampshire Vets, Emily Scott & Jamie Cole, have kindly agreed to be Judges for our dog & puppy companions again, which we are extremely grateful for.

There will be table top sales, supplies and services, raffle prizes and treasure chests for the dogs to sniff out any treats.

A dog photographer will be there to capture the beauty of your dogs and Battersea Dog Rescue will be joining us to seek out homes/fostering of dogs to good, kind and experienced people.

The Dog Show starts at 10 am and ideally you should register before Sunday 10th September, or you can register on the day. Judging starts at 11 am.

- Refreshments Available (cash only)
- Table Top or Dog Registration. £5 (cash only)

Email sheenagrassi@hotmail.com. Please walk your Dogs to the Old Basing Village Hall as there is limited parking for disabled badge holders only.

Sheena Grassi Vice- chair Old Basing Village Hall Management Committee

Old Basing Village Hall



DOG Show

Dog Treasure Chest Dog Raffle Dog Photographer Dog Supplies & Services

Sunday 10th September 2023
Starts 10am, Judging at 11am

Best Small Dog - Waggiest Tail - Best Trick - Best Veteran Dog - Best Working Dog - Best Poodle - Junior Handler - Best In Show - And many more....

Restricted Parking - Please walk your dog to the hall

£5 PER DOG

Pre-Register your dog / seller table:
sheenagrassi@hotmail.com

Cash only

BATHROOMS PLUMBING INSTALLATION



Get your lettings journey off to a flying start...



Our Full Management service provides you with complete peace of mind. From finding reliable tenants to ensuring all legal compliance is met, we will cover every aspect of letting your property. With over 25 years' experience in the lettings industry, Belvoir can be trusted to ensure you're given the best advice and found the most suitable tenant for your property.

For the complete 'hands off' approach, scan the QR code to book a free market appraisal today.



Because property is personal with...

BELVOIR!



www.belvoir.co.uk/offices/basingstoke

01256830800