

SPRING EDITION



Old Basing & Lychpit

Parish Council Community Newsletter

www.oldbasing.gov.uk

SPRING 2023

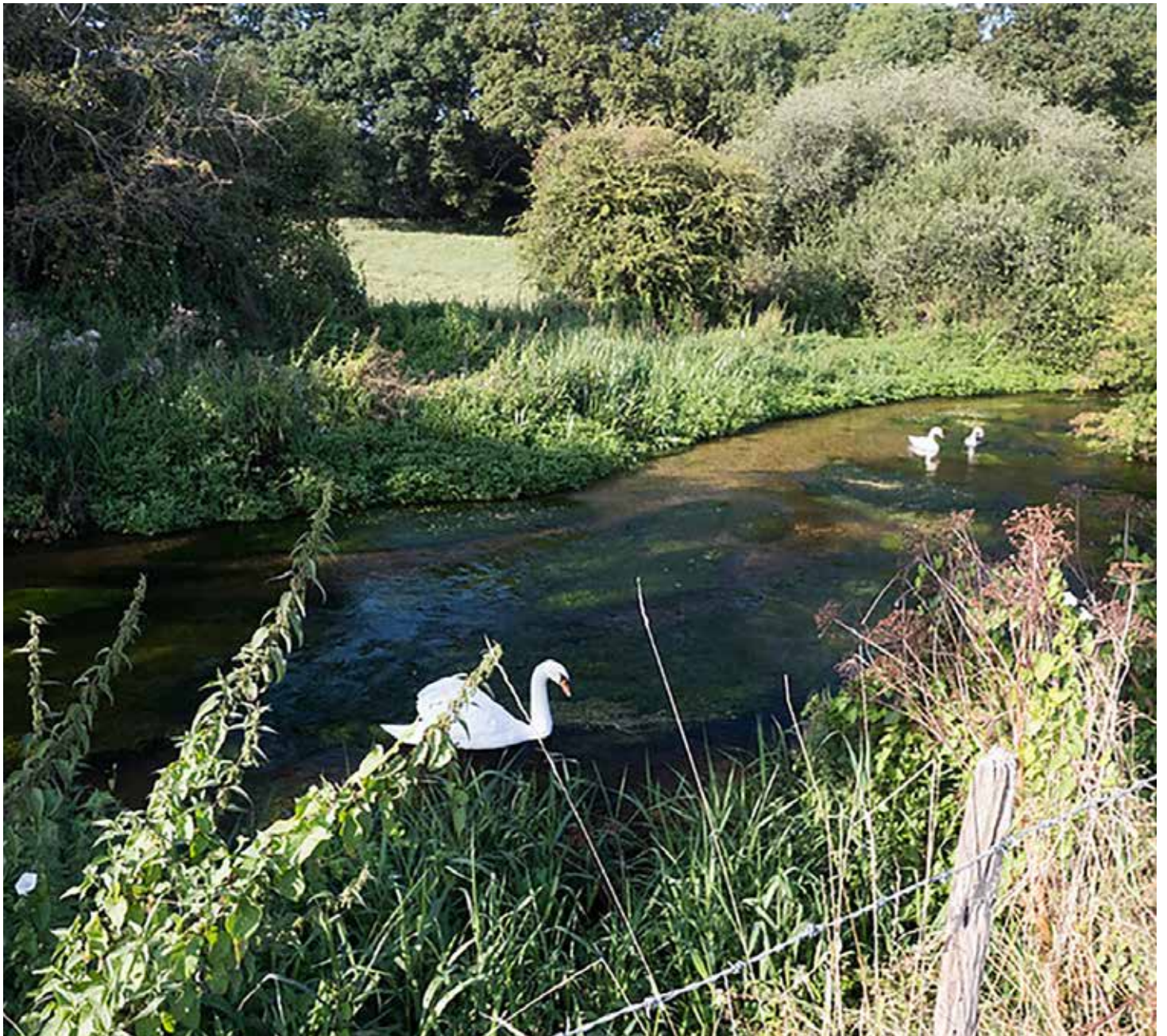


Photo of Swans on the River Loddon by Chris Hawkins

See inside for more of Chris' photos reflecting the beautiful countryside around Old Basing & Lychpit and read what the Parish Council is doing to try and preserve this for future generations through OBLEC and the Neighbourhood Plan.

FOREMOST TREE SURGEONS



CALL FOR YOUR FREE ESTIMATE

PRIVATE & DOMESTIC ENQUIRIES

Tree Felling, Tree Pruning, Stump Grinding, Tree Thinning,
Tree Reductions, Landscaping and Fencing.

COMMERCIAL ENQUIRIES

Site Clearance, Developers, Electricity Board Approved,
Council Approved.

OTHER SERVICES

Tree Surveys, Tree Reports, Tree Inspections,
Technical Plans, Logs and Chippings Supplied.

ALL WORK GUARANTEED
FULL EMPLOYERS' LIABILITY. £10 MILLION COVER
NCH, ARB & NPTC TRAINED STAFF



as recognised by
SAFETY
SCHEMES IN
PROGRESS



CALL TODAY ON 01256 814602

Greenacres Nursery, Aldermaston Road, Pamber Green, Tadley, Hants, RG26 3AF

info@foremosttreesurgeons.co.uk

foremosttreesurgeons.co.uk

Contents

Chairman's Report	4
Parish Council Meetings	6
Parish Council Notes	6
Reducing Energy Use in our community	8
Can we take control of our energy costs?	10
Riverfly Monitoring – volunteers needed	12
Vehicle Nuisance/Unauthorised Car Meets	14
Old Basing & Lychpit Good Neighbours	14
The Ivy Club	14
The National Garden Scheme – In Hampshire	16
St Mary's Summer Festival	17
Introducing OBLEC	18
Thinking of joining the parish council?	20
Children's Corner	21
Old Basing Infant School Turns 50!	22
Meeting & Party Venues in Old Basing & Lychpit	22
Find low cost homes in the borough	24
Neighbourhood Plan Update	26
Old Basing and Lychpit Village Show	28
Old Basing Women's Institute	29
County Councillor Report – Cllr. Elaine Still	30
CARNIVAL	32
Village Café	34
Golf days for Old Basing 2023	36
Bowls club looks forward to anniversary year	37
Letters from a Longbow Archer	38
This Summer at Old Basing Tennis Club	39



Old Basing VILLAGE SHOP.

Groceries – Quality Fresh Produce – Snack Foods – Soft Drinks
Tobacco Products – Toiletries – Newspapers – Magazines

We also deliver
newspapers to your home
with our daily paper round

T: 01256 464020
E: oldbasingshop@gmail.com



@Oldbasingvillageshop



10% discount for OAPs

Lady
DECORATOR & PAINTER
& SON

FREE ESTIMATES
01256 819785 • 07970 454226
20 years of experience

Volkswagen • Audi • Seat • Skoda

SERVICING AND REPAIRS • GENUINE PARTS • MOTS



Hampshire's
leading
independent
specialists

SJB
AUTOTECH
VOLKSWAGEN AUDI SEAT SKODA

📞 01256 477 411

🌐 sjbautotech.co.uk



Providing an outstanding
service for over 20 years.
Eastlands Court, Wade Road, Basingstoke RG24 8PL



Chairman's Report

Council Elections – This year Parish Councillors are up for election/re-election and should expect to complete a 4-year term. There are currently many local challenges which will require a strong and active Parish Council and although you may have a burning issue you feel needs attention, Parish Councillors have a responsibility to represent the whole parish and cover a range of issues. Parish Councillors are not paid (except legitimate expenses) and should be prepared to spend a (sometimes) considerable amount of their own time on Council business in addition to attending meetings. Sadly, in the past, too many good councillors have found the pressure on their time and family too much and have resigned. Are you made of the right stuff? Are you able to commit the time? If so, see the information in our "Parish Notes" to find out more.

Local Plan Housing – We have a challenging year ahead. This includes the Local Plan and Neighbourhood Plan update and the threat of unsustainable housing numbers across the Loddon Valley. The Parish Council has set up a working group, Old Basing and Lychpit Environment Campaign (OBLEC). This works under The Parish Planning Committee. OBLEC will work with SOLVE and our Borough Councillors to protect the Loddon Valley from excessive development. More about this elsewhere in this issue.

Traffic – In the last Newsletter my call for comments regarding the Bake Shop Parking elicited a massive response. Some were those directly affected reporting details of some very hostile reactions from Bake Shop Customers. An example from a customer, when asked to move a car that was completely blocking a resident's driveway, was "I'll park where I want". It seems most of the hostile reactions come from customers outside the area. Nevertheless, the Parish Council is working with the Bake Shop owners, the residents, and Borough Councillors on various proposals. It is too early to report any real progress at the time of writing.

Behaviour – Negative, and sometimes hostile reactions when complaining or dealing with an incident, appear to be on the increase. Frustration with petty rules, lack of action by the authorities or the perennial parking issues are some examples. We can only guess why this is happening but the new economic reality and COVID hangover cannot help. Whatever the reasons it costs nothing to be polite.

Lychpit Community Residents Association (LCRA) – Residents in Lychpit have formed this group and the Parish Council had a successful meeting with them during January following which I am pleased to report we have established a clear working relationship with them.

Cllr Peter Bloyce
Parish Council Chairman

Please support local businesses

A big thank you goes to all the local businesses that have advertised and supported this newsletter thereby enabling the Parish Council to produce this quarterly publication at no cost to our residents. However, the Parish Council makes no warranty in relation to the content of any advertisements placed in the newsletter and shall have no liability for any losses in relation thereto. Furthermore, the Parish Council makes no endorsements whatsoever with regard to any advertisements.



Beautiful lawns at affordable prices



Lawnmaster®
professional lawn care

  
Certificate Number 8302
ISO 9001
ISO 14001
A Corporate Member

Your lawn, our expertise...perfect!

based in Basingstoke

ASK FOR A FREE LAWN ANALYSIS

Call for a FREE no obligation quotation
0800 32 65 013 www.lawnmaster.co.uk

Or just text 'lawn' and your postcode to 60777 and we will call you.

  
/LawnMasterUK @LawnMasterUK /LawnMasterTV

Affordable Garden and Tree Services

- FENCING & PATIOS
- GARDEN DESIGN
- TURFING, PATHWAYS & STONWORK
- CONIFERS TOPPED, BOXED OR REMOVED with all roots destroyed
- TREE PROFESSIONALLY TOPPED, LOPPED OR FELLED

We do a good job for a fair price with NO hidden extras.

For a FREE quote with expert advice call

Landline: 0333 577 9080

Mobile: 07788 837641
affordablegardenandtrees@gmail.com

14 day cooling off period
Public liability insurance

10% OFF FOR OAP'S & DISABLED

www.ssfscitt.org.uk



SCITT
South Farnham
Outstanding Teacher Training

01252 717 408

Do you want to be a Primary or Secondary teacher?
Do you want to train to teach in Old Basing?
If so, you need South Farnham SCITT!
'Outstanding'

TEACHER TRAINING

Primary QR



Secondary QR

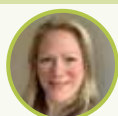


Parish Council

PARISH OFFICE



Sandra Tuck (Clerk)
clerk@oldbasing.gov.uk



Kate Hope (Deputy Clerk)
deputy.clerk@oldbasing.gov.uk

COUNCILLORS



Peter Bloyce
Chairman,
Old Basing



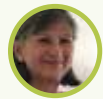
Murray Campbell
Vice-Chairman PC &
Planning Old Basing



Alan Renwick
(Vice-Chairman,
Facilities Management)
Old Basing



David Whiter
Old Basing



Kate Tuck
Old Basing



Francesca Maritan
Old Basing



Roger Doust
Chairman, Planning
Lychpit



Steve Brown
Chairman, Facilities
Management
Lychpit



Charlie Butfoy
Old Basing



Sheena Grassi
Lychpit



Mark Hermitage
Old Basing



Gillian Moore
Lychpit

Parish Council Meetings

Meetings are held in the Parish Office.

Members of the public are welcome to attend any meeting and those with mobility difficulties can be accommodated with advance notice. In addition to the main Parish Council meetings, held on the first Tuesday of each month, regular Committee meetings are held to discuss specific matters. These Committees are:

Planning & Development Committee

Second and fourth Tuesday monthly

Finance & Resources Committee

Three meetings per year, in February, June and October

Facilities Management Committee

Bi-monthly, on a Tuesday

Annual Parish Council Meeting

Every May

Annual Parish Meeting

Each year, held between 1 March and 1 June

Parish Notes

ELECTIONS IN MAY

Our Chairman has mentioned in his report that Old Basing & Lychpit Parish Councillors will stand for re-election in May and one or two may decide to step down. If there are 12 or fewer candidates they will be automatically elected. However, if more than 12 candidates put their name forward there will be an election. If you are interested in local matters and feel you can make a difference, why not put your name forward. All you need to know about the role of Parish Councils and what is expected of a Parish Councillor can be found by copy and pasting the link below into your browser: www.hampshirealc.org.uk/media/filer_public/no-crawl/d2/df/d2df2eb0-37cf-41f1-9e22-9b0b26548534/hampshire-alc-get-involved-get-informed-2021.pdf

If you decide to apply, you will need to register your Councillor application with the Borough Council on www.basingstoke.gov.uk/become-a-parish-councillor If you need more information before deciding, contact the Parish Office and call in for a chat.

Residents intending to vote in person, must take a form of identification with them when visiting the polling station (driving licence, passport or other form of ID) – your polling card will not be sufficient.

WHO IS RESPONSIBLE?

We hope you will like our new Infographics elsewhere in this Newsletter, one explaining which level of Council is responsible for different services and facilities and the other briefly explains the role of various organisations in relation to development in and around the Parish.

BIG COMMUNITY LUNCH

The weekend of 6,7,8 May will be a weekend of celebration for the Coronation of His Majesty King Charles III. Sunday 7 May has been designated BIG COMMUNITY LUNCH day and the Parish Council is encouraging residents to bring along a picnic lunch to the front of the recreation ground. Our local pizza company (Leather & Willow) and an ice cream van will be there so you don't even have to make sandwiches.

Hopefully the weather will be fine, but if you have a pop-up gazebo you may wish to "play safe" and bring that along. The Bowls Club will be holding a match to celebrate its 75th Anniversary and it is likely there will be cricket on the main recreation ground so parking may be limited but there is plenty of additional parking in Riley Lane.

Diary Dates 2023

March	7 Parish Council Meeting 14 & 28 Planning & Development Committee 21 Facilities Management Committee
April	4 Parish Council Meeting 11 & 25 Planning & Development Committee
May	2 Facilities Management Committee 4 Local and Parish Council Elections 16 Annual and Ordinary Parish Council Meetings 23 Planning & Development Committee
June	6 Parish Council Meeting 13 & 27 Planning & Development Committee 20 Finance & Resources Committee
July	4 Parish Council Meeting 11 & 25 Planning & Development Committee 20 Finance & Resources Committee
August	1 Parish Council Meeting 8 & 22 Planning & Development Committee
September	5 Parish Council Meeting 12 & 26 Planning & Development Committee 19 Facilities Management Committee
October	3 Parish Council Meeting 10 & 24 Planning & Development Committee 17 Finance & Resources Committee
November	7 Parish Council Meeting 14 & 28 Planning & Development Committee 21 Facilities Management Committee
December	5 Parish Council Meeting 11 Community Partnership Evening 12 Planning & Development Committee

hartdrives

and landscapes

Driveways • Landscaping
Paving • Stonework

Professionally designed. Beautifully constructed. **T: 01256 324 578**



hartdrives.co.uk



Established over 30 years
www.mowmate.co.uk

01256 880553

sales@mowmate.co.uk
Sherfield on Loddon
Garden Centre,
Wildmoor Lane,
Sherfield on Loddon,
Basingstoke
RG27 0HL



- WALK BEHIND MOWERS
- RIDE-ON MOWERS
- ROTAVATORS
- SCARIFIERS
- STRIMMERS & BRUSHCUTTERS
- HEDGETRIMMERS
- CHAINSAWS
- BLOWERS & VACUUM
- CHIPPERS & SHREDDERS
- TRAILERS
- LOG SPLITTERS
- RECONDITIONED STOCK FOR SALE
- HOVER MOWERS
- SPREADERS



Reducing Energy Use in our community

The cost of energy seems to be the subject of conversation everywhere at the moment and, here at the Parish Council, we are aiming to reduce our own "spend" while at the same time trying to see how we can give practical advice to our community.

We have started by surveying our own buildings together with the Village Hall to produce a phased plan for reducing our energy use. The Thursday afternoon Warm Hub sessions in Lychpit Hall are slowly growing and we aim to use our recently trained Energy Champions to come along and offer advice, including how to properly understand your energy bill and how to insulate your house effectively. With luck, we will soon have an infra-red camera which will be used to detect heat leaking from houses.

We are also developing a presentation about practical energy matters and would like to present this to any community groups where there are people who would like to know more about practical energy conservation. If you are interested in this or would like to be involved, then please contact us.

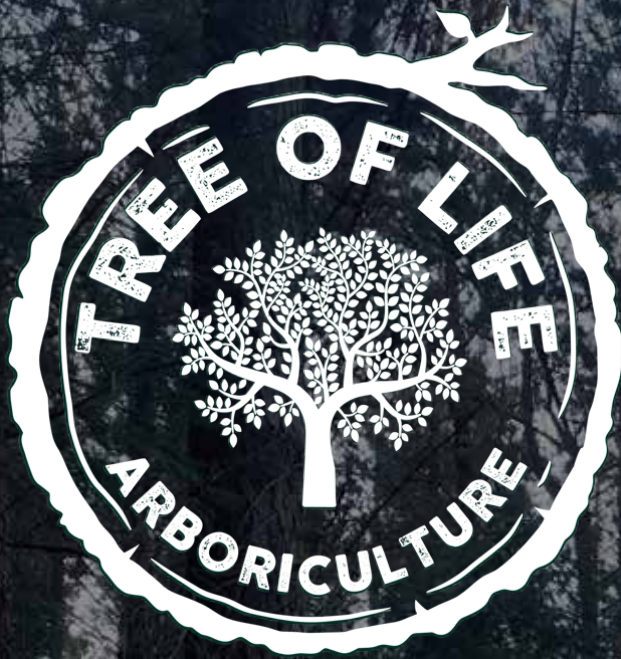
But although spending less on fuel is crucially important to many of us at present, we should not forget the pressing need to reduce our use of fossil fuels. Climate change has the potential to change our countryside and destroy many of our native species. Change in warmer parts of the globe may make life nearly impossible in many areas, threatening our own food supplies and causing mass migration.

Loddon Community Energy (LCE) are planning to raise (interest bearing) community funded bonds to install PV panels (Solar Cells) on the roofs of public buildings. Every unit of electricity generated this way saves carbon from entering our atmosphere and any surplus income will be used to reduce fuel poverty. The group's directors are all local and include councillors from Old Basing and Lychpit and Bramley Parish Councils, plus representatives from Chineham and Silchester.

The accompanying article is our interview with Martin Heath who is a local renewable energy expert and a resident of Old Basing. He's also a member of LCE and he explains more about how we can all support the move to generate carbon free electricity whilst supporting our community.

LCE are a Community Benefit Company and guaranteed to return any profits to the community. If you are interested further in this or in becoming an Energy Champion, please contact me by email or through the Parish Office.

Steve Brown
stephen.brown@oldbasing.gov.uk



TREE & HEDGE CARE SERVICES

Professional, friendly tree care from qualified and insured Arborists.

- Tree Removal
- Tree Pruning
- Crown Reduction & Shaping
- Stump Grinding
- Deadwood Removal
- Tree Planting
- Hedge Trimming
- Wood Chipping

For a free consultation
or advice contact us:

07810 742906

treeoflifearb@gmail.com

www.treeoflifearb.com



Eversley, RG27 0PN



stneotsprep.co.uk

0118 973 9650

admissions@stneotsprep.co.uk



Open Morning

FRIDAY 10TH MARCH



KINDNESS - HAPPINESS - HONESTY - SELF BELIEF - RESPECT - COMMUNITY - FAMILY VALUES - THE OUTDOORS - AMBITION - FUN

Can we take control of our energy costs and help the environment? Your questions answered

Never have we been more mindful of how much energy we use. Whether you are concerned about rising costs, effects on the environment or both, there are things we can do to save money and our planet.

Here we talk to Martin Heath who, has been described as a veteran of the renewable energy industry,, and a founder member of Loddon Community Energy, (a Community Benefit Society empowering the local community to take control of their energy).

What is community Energy?

"Energy is vital for everything we do; whether that's moving a super tanker across the oceans or lighting the standby indicator on a TV. Without energy we can do nothing, it moves our vehicles, powers our gadgets and heats (and cools) our buildings. The trouble is, at the moment, we almost entirely rely on imported fossil fuels (oils and gas) to generate the energy we need. This produces massive amounts of greenhouse gas emissions and air pollution. In Basingstoke we produce about 1 million tonnes a year. Almost all our energy companies are owned by large multi-nationals. They make huge profits, none of which benefit us, and we have little (or no) control over what they do.

But there is an alternative. We can produce our own electricity here in Basingstoke, we can own the assets that generate it, we can control it, and even better, the profits can be used for good causes here in our local communities."

So, you're selling something?

"Loddon Community Energy (LCE) is owned and managed by local people; we have a say on what it does and how it does it. Electricity generated from the solar panels we will install is sold to local schools, local communities or to whomever is under the roof. The revenue generated is used to pay back investors and any surplus is re-invested in other projects and provide a Community Fund to help local people with energy efficiency and energy poverty.

The local community invests in renewable energy projects through "crowd funding" – members of the local community invest in community solar energy projects on local roofs or spare land. That is what community energy is all about."



Where's the catch?

"No catch. Each investor has a share in a local community energy co-operative. Each year they are paid a small amount of interest on the investment. Surplus money is then used to invest in other community projects for example free solar on the local school or doing something about fuel poverty or doing free energy efficiency surveys."

How do I know this isn't a scam?

"LCE is registered with and regulated by the Financial Conduct Authority and Cooperatives UK and is a member of Community Energy South who currently have over 50 members. Our founders are all local residents and are working on the project without pay."

I've no money to invest, can I still support LCE?

"Absolutely, if you are interested in finding out more, or you know of a large roof or unused field, or you just want to help our local community to generate its own cheap and clean electricity then please do let us know."

What are LCE doing for the community now?

"LCE is already active and we are training energy champions who will be able to advise on how to make your home more energy efficient and how to reduce energy bills. If you know of someone who needs help, or you want to be an energy champion please do contact us."

What are Energy Champions?

"LCE are busy training up as many people as we can to become Energy Champions who will visit local coffee mornings and similar events to give free advice on how to save on fuel bills. In the long term we will also be able to visit your home and give specific advice on how to save. We are looking for more people to train as Energy Champions, so if you are interested do let us know."

How can I keep up to date with what's happening?

"You can sign up to our contact list by visiting our website at loddoncommunityenergy.org.uk, follow us on Facebook by searching Loddon Community Energy or simply email us at info@loddoncommunityenergy.org.uk
"We'd love to hear from you"



Access Care

**DO YOU OR YOUR PARENTS
NEED A LIVE-IN CARER?**

**CALL NOW
FOR A BROCHURE & BOOK
YOUR FREE, NO OBLIGATION,
LIVE-IN CARE
EXPLORATORY MEETING
IN YOUR OWN HOME**

01264 319 399



**"PROFESSIONAL, ORGANISED, THOUGHTFUL, CARING
AND FRIENDLY. CONSTANTLY GO ABOVE AND BEYOND."**

WWW.ACCESS-CARE.CO.UK



**BOOKINGS AVAILABLE ON
01256 357333**

WALK INS ALWAYS WELCOME
CASH & CONTACTLESS ACCEPTED

FREE PARKING

44 BELLE VUE ROAD, OLD BASING, RG24 7JU



SIF JAKOBS
JEWELLERY
COPENHAGEN

— THE —
**SECRET
GARDEN**
DESIGNER JEWELLERY

Opening hours: Mon - Sat 9:30 - 17:30

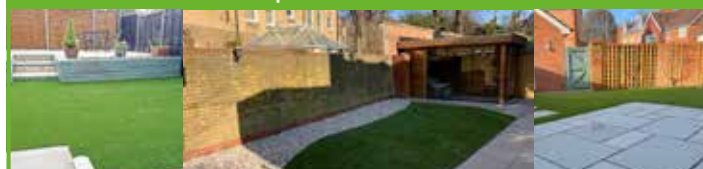
12 Winchester Street - Basingstoke - RG21 7DY

Tel: +44 (0)1256 329015

Web: www.thesecretgarden.uk.com

COMPLETE LANDSCAPING SERVICES

Home Owners, Urban Spaces, Play Areas,
Public Spaces and Schools



**We are platinum approved installers for
Royal Grass Artificial Grass**



- Paving
- Decking
- Fencing
- Artificial Grass

**Based in Hampshire, covering
the 3 counties**

Please call for a free quote.

Mob: 07582 881180

www.lawnlogic.co.uk



**Logic
Services**

Riverfly Monitoring – citizen science volunteers needed!

Why?

Chalk streams are naturally extremely rich in biodiversity – it's one of the reasons everyone gets so excited about them and why we should have amazing riverflies on the River Loddon. Riverflies are an indicator species for the overall health of a river and are often described as the 'canary in the coal mine' for rivers.

We only have what the Environment Agency tell us is the state of our river from very specific water quality monitoring in two locations, just above and below the Sewage Treatment Works (STW). We need to know more so that we have real evidence to use as a lever for action to improve our river. Right now it's a case of 'No data, No problem!' Basingstoke has grown massively over the last few decades and is set to expand ever further but the Loddon only rises in Basingstoke and so is a very small stream to take everything that is thrown at it.

Riverflies are an important part of the aquatic food chain and their limited mobility, relatively long life cycle, sensitivity to environmental change and water quality make them very useful barometers for the state of the River Loddon. As our Parish covers the source of the river we can really see what is happening, from the point the water rises from the aquifer at Crabtree to downstream of the Sewage Treatment Works. This stretch is precisely where Basingstoke as a whole, including Basing, Lychpit and Chineham, is impacting water quality through combined sewers, road run-off, surface water run-off, pollution and environmental degradation all of which can damage the ecology of the river and its catchment.

What?

A team of volunteers – citizen scientists who would take a 'kick sample' once a month in the same location. A kick sample is where you kick the gravel in the river and scoop out the disturbed water which contains our riverflies. Pour the sample into a shallow dish then identify the 8 species we are looking for and count them. It should require no more than 1–2 hours commitment at most per month. Full training will be given and now I've seen a presentation on the monitoring even I think I can spot the difference (and I'm hopeless at biology), so every confidence we can train up anyone who is willing and interested to learn. Sites will be identified and you will be supported so that we can cover each other for holidays etc.



It should be fun and you will be doing something that may profoundly help our river and its ecology.

When?

We will be training people in the Spring and working with the Loddon Catchment Partnership, hosted by South East Rivers Trust.

Next Steps

Contact Kate Tuck at kate.tuck21@gmail.com with expressions of interest/like to know more. Please include name, address, phone and email.

It would be really great to hear from you.



Amberwood Designs

With a wealth of experience,
we have the skills to help.

Searching for Double Glazing in Berkshire,
North Hampshire, South Oxfordshire or the surrounding areas?
Looking for a service of the highest quality, at a price you can
afford, make your first call to the professional and friendly team
in place at Amberwood Designs.

OUR SERVICES...

- PVCu Windows • Doors & Conservatories
- Bi-folding doors • Made-to-measure windows
- Guardian warm roof systems • Porches
- Carports • Canopies • Composite Doors



0118 982 0300 amberwooddesigns.co.uk
office@amberwooddesigns.co.uk
 Office 1, Estate Offices, Youngs Industrial Estate,
 Paices Hill, Aldermaston RG7 4PW

L TITCOMBE & FAMILY

Independent Funeral Directors



Personal, respectful and attentive service

*It is usual for people to be unsure of what to do in the immediate
aftermath of a bereavement. We will help guide you through the
initial steps and provide advice on other matters of importance you
may need to think about when someone you know dies.*

We are here when you need us most

24 hours a day

All aspects of Funeral Arrangements undertaken

8 Swan Street
Kingsclere
Newbury RG20 5PJ
Tel: 01635 299900

4 Elmwood Parade
Basingstoke
RG23 8LL
Tel: 01256 476366

www.tmfunerals.co.uk



www.srhallltd.co.uk
SRH S R Hall Ltd
 Building, Plumbing & Heating Contractors

All aspects of domestic plumbing and building
 Bathroom and kitchen installations
 Boiler installation, service and repair
 Central heating servicing
 Hot water cylinder replacement

**We now offer a
24 hour call out
service**

Just a selection of
the services we offer
01256 765535
enquiries@srhallltd.co.uk

**CROOMBS
ELECTRICAL**

**ELECTRICAL CONTRACTORS
FIRE PROTECTION SERVICES**

Installations, repairs and maintenance to
industrial, commercial and domestic premises
 Fire & Intruder Alarm Systems • Computer Cabling
 Lighting & Design • Rewiring • Access Control
 Portable Appliance Testing

**24 HOUR
EMERGENCY
SERVICE**

01256 357923
www.croombs.co.uk



Vehicle Nuisance / Unauthorised Car Meets

Good evening all,

Basingstoke has enjoyed a reduction in unauthorised car meets since early December. However we are anticipating that they may return in the near future.

The reports we receive from you are vital in helping us conduct our investigations and patrols as well as preventing crime.

Please see our new updated reporting guide that includes a QR code that will hopefully make it easier to report incidents to us.

If you witness any dangerous driving or serious Anti-Social Behaviour (ASB) relating to unauthorised car meets, please quote OP CHROMIUM however you contact us.

Following your report, we have the facility to send you a link in order for you to upload any footage you might have especially if this includes registration plates.

OLD BASING & LYCHPIT GOOD NEIGHBOURS

CAN WE HELP YOU? As well as transportation we do offer to undertake other small tasks, perhaps we can get some shopping for you – ASK US – or you would like to go and do some shopping, or you have an appointment and you want someone to sit with your loved one – ASK US – you would like to see a friendly face to have a cup of tea and a chat with – ASK US. Telephone **0333 0440116**

Can you help us? If you could spare a little time occasionally or regularly to help local people in need of neighbourly help we would love to hear from you. Telephone **01256 328196**

Sue Wilson – Chairman

THE IVY CLUB

2023 – good to see everyone back, and our numbers continue to swell.

Quite a lot of members had already met up at The Big Turkey Pie Dinner – what a lovely village get together. Thank you to everyone involved in the organisation, here's to the next one.

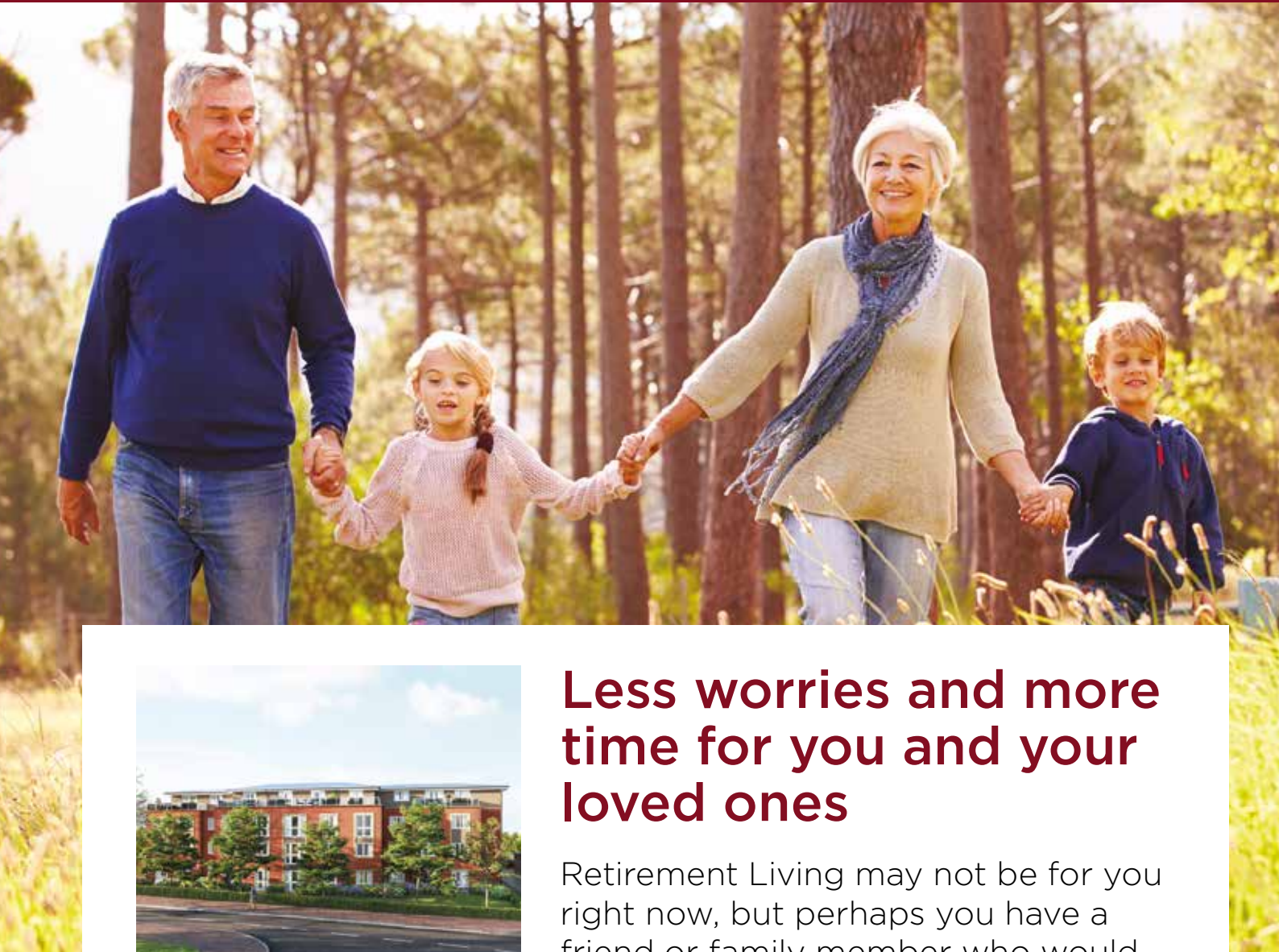
We are always most appreciative of local business help and would like to say a big thank you to All Aspects Letting Agency, Olivers Fish and Chips and the Co-Op for their support. We also received the Parish Award of £100.00 which will be put to good use.

We are hoping to organise some future coach outings, which we will publish in the Basinga.

Our jigsaw and book exchange programme is continuing and is very popular with our members.

We offer value for money £2.00 per week for an afternoon of good company, laughter, refreshments and a raffle, not forgetting our fortnightly Bingo afternoons, what more could you ask for. We meet in the RBL Hall every Wednesday from 1.30pm until 4.00 pm. All welcome.

Sue Wilson – Chairman



Less worries and more time for you and your loved ones

Retirement Living may not be for you right now, but perhaps you have a friend or family member who would enjoy a low maintenance, safe, secure, and independent lifestyle?

With developments all over the country, we have something for everyone.

Call us to register your interest

 **0800 077 4594**

 **austen.lodge@crl.co.uk**

 **crl.co.uk/austen-lodge**

BASINGSTOKE

Austen Lodge,
London Road
GU14 7PN

Coming soon

Churchill
Retirement Living 

**LODGE MANAGER • GUEST SUITE FOR FRIENDS AND FAMILY
• LIFT • LANDSCAPED GARDENS • OWNERS' LOUNGE**



The National Garden Scheme – In Hampshire

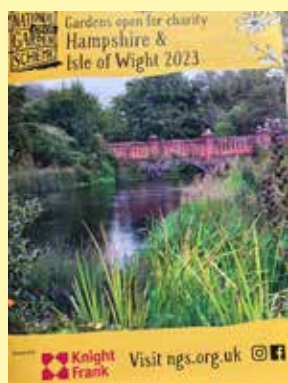
Another year starts with masses of positivity following on from our amazing results from 2022.

Once again the National Garden Scheme – Nationally – were able to donate in excess of £3 million to our beneficiaries. In fact £3.11 million was donated to our Nursing, Caring and Health Charities:-

Marie Curie	£450,000
Macmillan Cancer Support	£450,000
Hospice UK	£450,000
The Queens Nursing Institute	£450,000
Carers Trust	£350,000
Parkinson's UK	£350,000

The balance goes to another ten smaller charities. You can find details of all our beneficiaries on the link ngs.org.uk/who-we-are/beneficiaries

Hampshire did not disappoint by increasing their totals raised in 2022 by just shy of 30% on 2021. The popularity of our 'By Arrangement' gardens in 2022 was amazing. These gardens open on specific days agreed between the garden owners and Groups – be it a small group of friends to groups of 20 or 30 plus members of Garden Clubs or u3a members etc. This gives the group a much more personalised and leisurely visit. Once again this year I have produced an A4 sheet with all the By Arrangement Gardens listed with contact details, areas and rough dates. If you would like to receive a copy of this list, please contact me. Our By Arrangement gardens are also available to view on the website ngs.org.uk/hampshire-by-arrangement



The Hampshire Yellow Book is now available in several local garden centres (sadly not all!) and Libraries. However, if you cannot locate one we have a convenient online version available: issuu.com/levelcreative/docs/hamps_iow_2023_flip_book

This year for the first time the Isle of Wight gardens are featured in the back of the Hampshire Booklet. Now to some of the amazing gardens open in and around Old Basing.

BEECHENWOOD FARM

Hillside Odiham RG29 1JA

Opening: Wednesday 29th March AND every Wednesday until 7th June 2pm to 5pm
Admission: £5.00 children free



Refreshments: Home-made teas

findagarden.ngs.org.uk/garden/8569/beechnwood-farm

A 2 acre garden in many parts, with lawn meandering through woodland with drifts of spring bulbs. Rose pergola with steps, pots with spring bulbs and later aconiums. Fritillary and cowslip meadow. Walled herb garden with pool and exuberant planting. Orchard includes the white garden and hot border. Greenhouse and vegetable garden. Rock garden extending to grasses, ferns and bamboos. Shady walk to belvedere. 8 acre copse of native species with grassed rides.

ALSO OPEN BY ARRANGEMENT: From March to June for Groups up to 100. Contact owners to arrange: **07844 162419** OR beechnwood@gmail.com

BERE MILL London Road Whitchurch RG28 7NH

Opening: Monday 27th March 1pm to 5pm

Admission: £7.50 children

free CARD PAYMENTS

ACCEPTED Refreshments:

Home-made teas

findagarden.ngs.org.uk/garden/19432/beremill



The garden was built around an early C18 mill on an idyllic isolated stretch of the River Test, east of Whitchurch. The gardens have been built incrementally over 30 yrs with extensive bulbs planting; herbaceous borders with magnolia, irises, and tree peonies; a traditional orchard and two small arboretums, one specialising in Japanese shrubs and trees. The mill buildings were the original location of Portals who first sold bank note paper to the Bank of England from the mill in 1724 and there are interesting industrial and agricultural archaeological remains, including reconstructed water meadow structures.

Stunning NEW Garden:

COLES Basing Dean Privett Alton GU34 3PH

Opening: Sunday 14th May 10.30am to 7.30 pm (Plus dates in August & October)



Admission: £10.00 children free. Card Payments available. Refreshments: From Home-made teas to home-made soup and sourdough bread, vegetarian tarts, salads and wine.

findagarden.ngs.org.uk/garden/12207/coles



Renovation of once-famous garden, famed for its rhododendron and azalea Spring display, planted in late 1940s by Otto Nicholson, whose family created the distinctive architecture in this

locale. (Country Life called Coles 'a great post-war garden' in 1961). 50 mature Japanese Acers also dot the middle canopy beneath the oaks and sweet chestnuts of the ancient woodland that comprises over half of the 25 acre site: bluebells and varied leaf colour provide contrasting Spring and Autumn palettes. The rhododendrons and azaleas are particularly fine in two grassed areas created in the woodland, The Glade and The Rockery, and rival Exbury for their variety and colour. Garden renovation over the last 7 years has been carried out by Mike & Shuna who restored the 1764 Richard Woods garden at Old Alresford House: at Coles they have recently added 15

beds of contemporary grass and perennial planting around the stunning modern house they have built, with its own central garden courtyard accessed by walking under the house. The renovation will be complete next year so the garden is of particular interest to garden societies that like to see gardens in the making. The wildflower meadow beneath the arboretum will be planted this year, as will the heather beds beneath the pinetum they have created, but almost all the trees are planted, with some unusual specimens, all carefully labelled. They have also added a dramatic koi pond to accompany the old dew pond and large wildlife pond and a 'water walkway' is just one of the many walks you can enjoy. Anyone who attended Mike's illustrated talks on the history and renovation of the garden at Alresford will not want to miss his talk on their latest project here. He and Shuna will gladly then accompany groups around the garden.

Happy Garden Visiting.

Best Wishes

Pat Beagley (Head of Publicity)

National Garden Scheme – Hampshire

pat.beagley@ngs.org.uk

St Mary's Summer Festival

All Things Bright & Beautiful, All Creatures Great & Small 23rd– 25th June 2023

The Summer Festival Team at St Mary's Church are planning a Summer Festival on the theme of All Things Bright and Beautiful, All Creatures Great and Small.

The weekend will commence on Friday, 23rd June, at 7pm with a fun Beetle Drive evening for all the family. Tickets, £5 per adult, £2.50 per child or £12.50 for family tickets (2 adults + up to 4 children). Doors open at 6.30 pm.

From 11am to 4pm, Saturday 24th and Sunday 25th, a Summer Fete will be held with stalls, barbecue, cream teas, refreshments, children's activities in St Mary's Conservation Area, music

including the school choirs at 11.30 am (Saturday) and the RBL Band of Corps at 2pm (Sunday) and the return of the popular Tower Tours.

Displays of All Things Bright and Beautiful, All Creatures Great and Small will decorate the outside of St Mary's from Friday 23rd June until Sunday, 2nd July, giving everyone plenty of time to view.

There will be an opportunity to vote for your favourite display until 3pm on Sunday, 25th June, with a small prize awarded to the winner.

We look forward to seeing you!





Introducing OBLEC

OBLEC is a campaigning organisation, run for and on behalf of residents within the parish of Old Basing and Lychpit.

OBLEC's primary function is to resist robustly the imposition of inappropriate, large housing developments on greenfield sites within the Parish.

Your Parish Council has created a Campaign Group – OBLEC – to bring together all organisations and local politicians against these proposals.

The Update of the Local Plan has been delayed but the threat has not disappeared and we are in danger of having 2,150 houses built within the Parish, in three huge developments.

As far as local residents and residents of the surrounding area are concerned, these developments threaten an asset of great recreational and environmental value with its biodiversity, flora and fauna, numerous Sites of



River Loddon

Importance for Nature Conservation, history, and scenic beauty.

Large scale development will further compromise water quality in the River Loddon, a rare 'Chalk Stream', and minimise the value of the Strategic Gap between Basingstoke and Old Basing and Lychpit.

Producing our Neighbourhood Plan (published in 2018) made us very aware of how much the residents valued the Loddon Valley environment and how strongly they wanted it protected and enhanced. OBLEC will be launched at a Public

Meeting in Old Basing Village Hall at 11 am on Saturday 15th April 2023.

Please put this date in your diary and come along to find out more.

Gill Moore – Secretary to OBLEC



Old Basing from Bushey Lease Copse



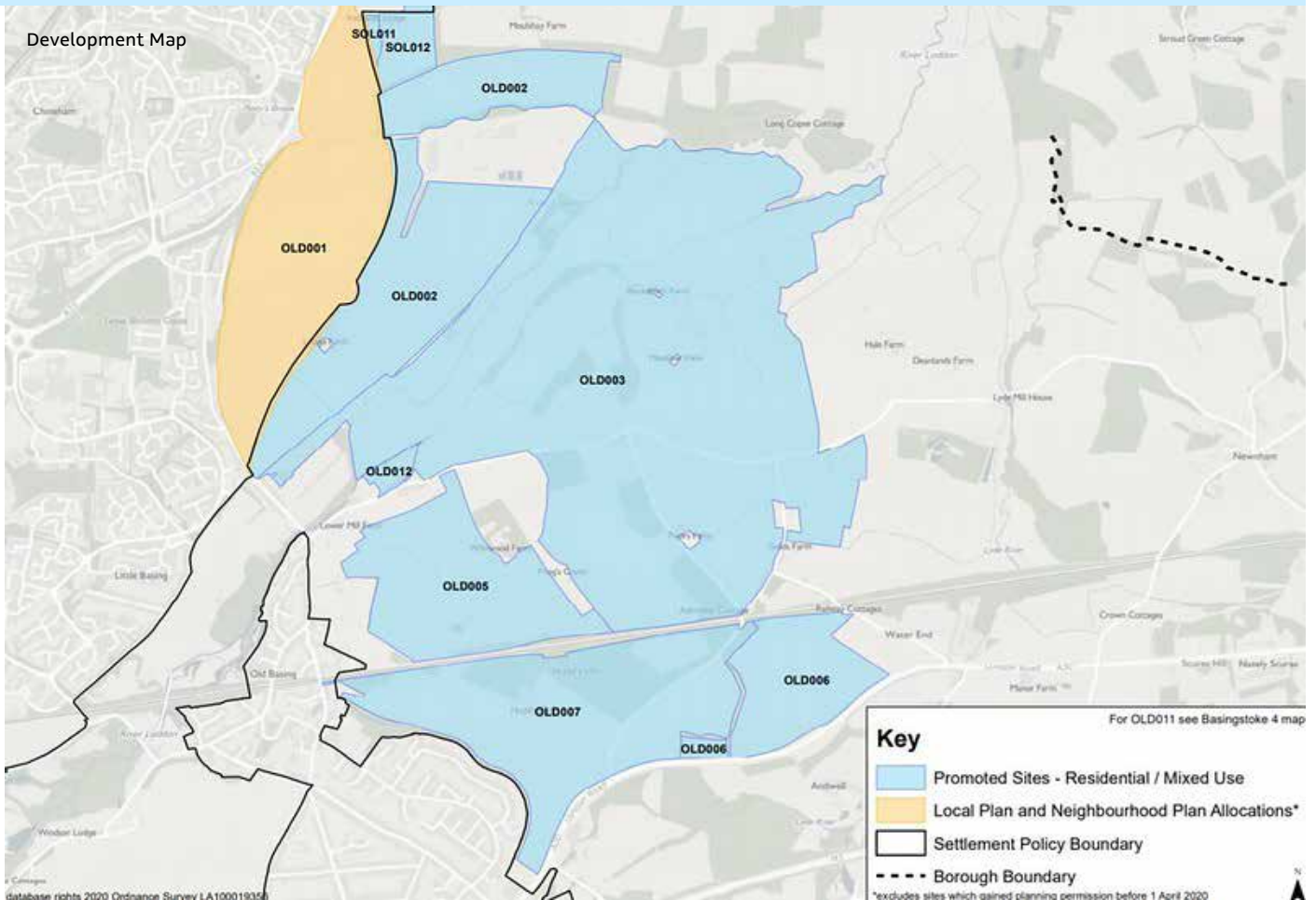
Loddon Valley



Farm Land



Flooding



Local Development in Old Basing & Lychpit



Old Basing & Lychpit Parish Council represents the views of its residents and acts as a Statutory Consultee in response to Planning Applications made to the Local Planning Authority

PARISH COUNCIL



A Parish Council Working Group which is working with other local groups to focus on robustly resisting unnecessary development in greenfield sites surrounding the Parish

OBLEC



SOLVE

SOLVE represents residents, who believe our unique eco-systems and historic sites of national significance are as important as our economic aspirations, and should be protected for the continued enjoyment of the wider Basingstoke community



BOROUGH COUNCIL

As principal Planning Authority, Basingstoke & Deane Borough Council will prepare and submit the Local Plan Update, which threatens to carve extensive new housing developments into countryside surrounding the Parish

THINKING OF JOINING THE PARISH COUNCIL?

WHO ARE THE PARISH COUNCIL?

A Parish Council is the lowest tier of Local Government. It raises money by gathering a proportion of each household's Council Tax (the 'Precept'), and spends it on local facilities and services with a view to making everyone's quality of life better.



CAN I BECOME A COUNCILLOR?

If you have lived* or worked within the Parish for at least twelve months, are over the age of 18 and are a Commonwealth citizen, then you can become a Parish Councillor.

*Applicants must have lived a maximum of three miles from the Parish boundary to qualify.

HOW DO I APPLY?

Contact the Parish Office who can guide you through the process. You will need an Old Basing/Lychpit parishioner to nominate you and another to second the nomination. You can also nominate someone else who you think would make a great Councillor.



HAVING A SAY IN WHO IS ELECTED



If more people are nominated than there are seats available, there will be an election. This will give you a chance to choose the person who represents your interests the best. You will receive a polling card with all the details needed for voting.

WANT TO KNOW MORE?

CONTACT US

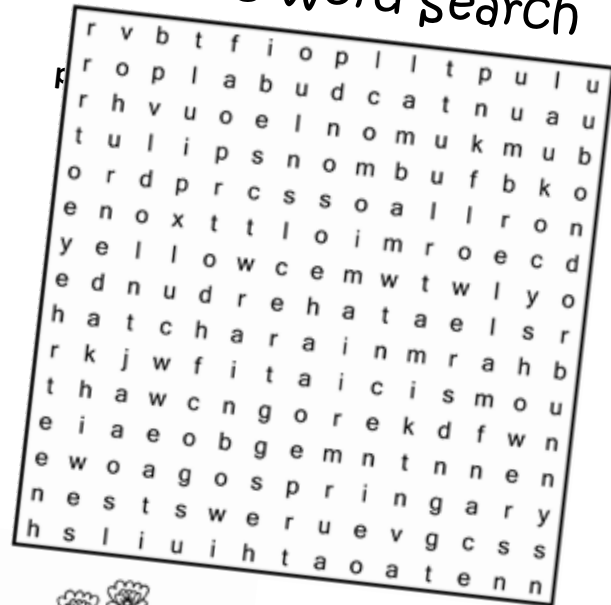
email clerk@oldbasing.gov.uk

phone 01256 462847

or explore www.oldbasing.gov.uk for more information

Children's CoRner

Spring Word Search



Spring
Showers
Tulips
Hatch
Lamb
Blossom
Yellow
Bud
Rainbow

Clean
Flowers
Thaw
Chick
Bunny
Nests
Warm
Umbrella
Bloom

Farm Animal Word Scramble

O\$EHR

□ □ □ □

G\$PI

□ □ □

OCSW

□ □ □

CUDKS

□ □ □ □

HECCIK\$N

□ □ □ □ □ □ □

G\$OD

□ □ □

PE\$EH

□ □ □ □

TAOG\$

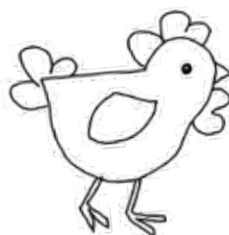
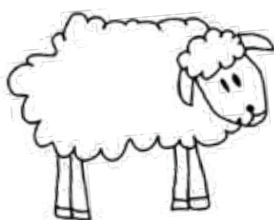
□ □ □ □

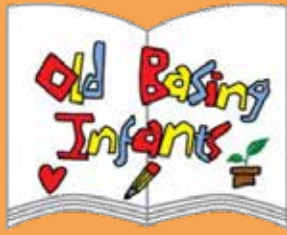
G\$EEE

□ □ □ □

TAC\$

□ □ □





Old Basing Infant School Turns 50!

Old Basing Infant School recently celebrated its 50th anniversary. At the end of January, the children had a special History Week, learning all about how the school has changed in its 50 years.

They found out lots of facts from visitors who used to attend Old Basing, and even had a visit from a previous Head Teacher. The visitors kindly shared old memorabilia as well as stories from their childhood at Old Basing, with one class learning an old clapping game.



The children enjoyed learning what the school used to be like and identified differences from when the school was first built using maps and photos. They were fascinated to find out that the school used to have a swimming pool where the MUGA now is and couldn't believe that school uniform wasn't compulsory! They



thought about what life was like back in the 70s and dressed up in 1970s inspired costumes. Some children even had a 70s style face painting in class. They all looked fantastic and had a bit of a boogie to some 70s classics.

To mark this occasion the school had special pictures taken by a drone with the children creating a 1973, 2023 and 50 formation. This is being printed onto a canvas and being displayed in the school to celebrate 50 years of Old Basing Infant School!



Meeting & Party Venues in Old Basing & Lychpit

Old Basing & Lychpit has a number of venues suitable for evening and weekend hire for all types of parties and meetings and other group events. For information or to enquire about availability please contact the individual venues as shown below.

Lychpit Community Hall and Old Basing Pavilion Tea Room

Email deputy.clerk@oldbasing.gov.uk

A calendar showing regular events and hall availability for parties can be found on the Parish Council's website www.oldbasing.gov.uk
01256 462847

Old Basing Village Hall & Frank Goddard Room

If you would like to enquire further please contact the Booking Secretary, Heulwen Norfolk on 07544 289932 or bookings@oldbasingvillagehall.co.uk

The Beddington Centre

For children's parties and meetings of up to approx.50. Cat via email beddingtoncentrebookings@gmail.com

Old Basing Cricket Club

Licensed club house for parties and events of up to 50 people. John Huntingdon 07966 394599

Old Basing Royal British Legion

Large fully-licensed function room with stage and dance floor, available for all types of gatherings such as weddings, funeral wakes, children's parties or training sessions. Maximum capacity 120. Also available are two board/meeting rooms each with tea and coffee making facilities and wifi. socialclubentertainments@gmail.com or 01256 465800 or 07437 016815

Parish Meeting Room

Adjacent to St Mary's Church, Old Basing, this room is suitable for groups of up to 60 (seated), 100 (standing). Please note: limited parking.
Debbie Filer, Administrator 07541 698235

Basing House

Great Barn – Walled Garden – Courtyard – Learning/Community Room. For more information please visit our website www.hampshireculture.org.uk/basinghouseorg.uk Alternatively please contact us at Basing House on 01256 463965 during opening times.



PHOENIX FENCING

SUPPLIES LTD

Are you looking for fencing and decking material in Basingstoke and throughout the surrounding areas? If so, why not pay a visit to Phoenix Fencing Supplies Ltd? We stock a large range of high quality European panels, decking & fence panels.



behind Cemex Concrete
off Gresley Road
Swing Swang Lane
Basingstoke RG24 8NR

01256 841199
sales@phoenixfencingsupplies.co.uk
www.phoenixfencingsupplies.co.uk



The Complete Tree Service

Teams all over Surrey, Hampshire & Berkshire

- Fully trained & certified staff
- £10m Public Liability Insurance
- Health & Safety focused
- 25 years' experience
- We guarantee we can help
- Call for professional, friendly advice

- Tree removal, thinning & lifting
- Scrub clearance & hedge trimming
- Residential & commercial work
- Stumps removed

01256 763 162 • 01252 624 702

Images, video footage, client lists and more at:
www.cedardale.co.uk




Specialising in MOTs, servicing and general repairs for cars, motorbikes, vans and other light goods vehicles

MOT TESTS

We have a dedicated MOT bay, and are approved to test Class I+II mopeds, motorcycles + motorcycle companions, Class IV Cars, vans + light commercials up to 3000kg, including quads

SERVICING & REPAIRS

We have a well equipped service bay with modern computerised Bosch diagnostic tools, providing servicing for all makes and models and fault diagnosis for computerised vehicle systems, plus engine repairs, clutch, brake, exhaust repairs/replacements, MOT repairs and body repairs

MOTORBIKES

Servicing for leading makes and models, fault code reading, Insurance/accident repairs, MOT repairs and paintwork



AA Certified

01256 810766 | www.rtgaiger.co.uk

Units 1 & 10, The Beresford Centre,
Wade Road, Basingstoke RG24 8FA

Looking for independent financial advice you can trust?

We'll help you create, increase, and protect your wealth. Our personal service is designed to build a shared understanding to your wealth objectives and to translate these ambitions into reality.

To find out more, please call:

01276 34932



Family Wealth Preservation | Wealth Management

Tax Planning | Protection Planning

Retirement Planning

 www.s4financial.co.uk

Unit A, Causeway Farm, Cricket Green,
Hartley Wintney, Hampshire
RG27 8PS

Find low cost homes in the borough with new register

Residents looking to buy low cost homes in the borough are being encouraged to join a new home ownership register set up by Basingstoke and Deane Borough Council.

The online register is a one-stop shop for people wanting to find out the latest information on affordable properties to buy in the area.

Details of new homes and existing properties for resale are available on the website and alerts may be sent out to those people who have registered their details when suitable properties become available. Properties will include shared ownership homes, local discounted homes and homes through the government's First Homes scheme, when they become available.

The register is open for all to join but schemes will each have their individual eligibility criteria which residents will need to meet to progress with a purchase. It is the latest in a package of support provided by the council to help residents in the borough get on the housing ladder and its timing coincides with the announced closure by Homes England of the Help to Buy website.

The council recently held its ninth low cost home ownership event in January, welcoming in hundreds of people interested in affordable homes to buy in the borough. The council also provides loans of up to £30,000 through its Own Home Loan scheme to

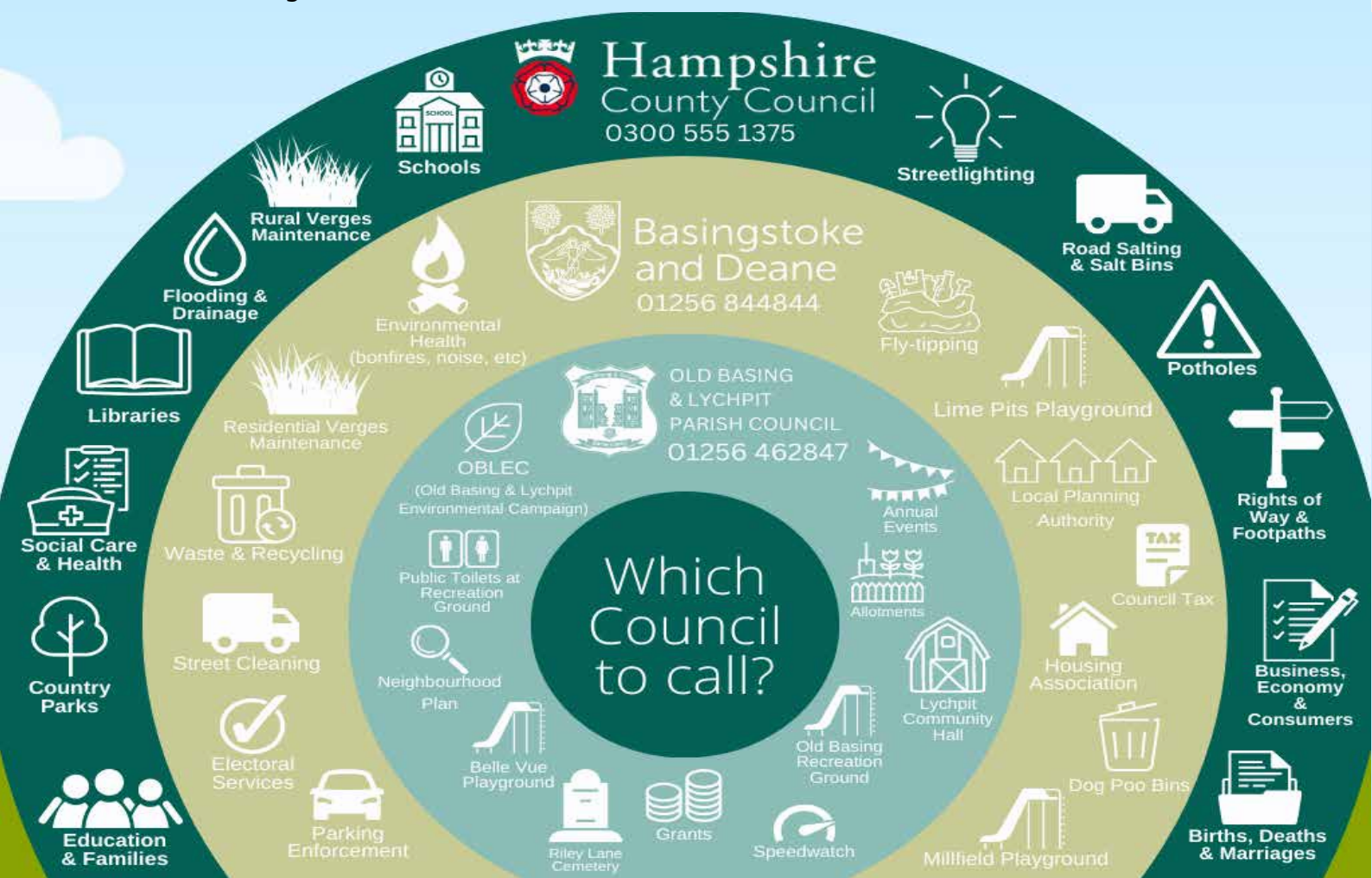
help first time buyers purchase a new or existing property in the borough.

Cabinet Member for Homes and Regeneration Cllr Samuel Carr said: "As a borough council we are taking action to help local first-time buyers into their own homes with a package of support which includes providing information on the schemes and properties available in the borough and offering loans to help purchase homes.

"I am passionate about helping first time buyers to get onto the housing ladder and turning their aspirations into a reality and this new Home Ownership Register demonstrates my commitment to this. With the imminent closure of the Help to Buy website, our register will become even more valuable in helping residents to find out more about the schemes available and be among the first to know when properties become available."

For more information and to join the Basingstoke and Deane Borough Council Home Ownership Register visit basingstoke.homeconnections.org.uk

To find out more about Own Home Loan visit www.basingstoke.gov.uk/own-home-loan





EST.

HM

1987

HAVEN MEMORIALS

MONUMENTAL MASONS

Haven Memorials is the perfect choice when it comes to organising a Memorial for your loved one, every step of the way from the Quarry to the Cemetery our Memorial Specialists are there to guide you, give the best options and answer the difficult questions you may have.

We are a local, family run, 3rd generation business and our values are simply to give the best help to other families when they need it the most. You can come to our Shops and Factory and see for yourselves the materials and various shapes and styles of Memorials to give you a better understanding and view of what you may like. Every Client of ours gets a

1-to-1 appointment with one of our Specialists when they come to visit us.

Traditional masonry techniques are still used at Haven Memorials, all our Memorials are hand-finished and when completed into the Cemetery every Headstone is fixed by hand to assure a professionally completed product. We only source the best quality stone hand-picked from across the planet to give our Memorials the best depth of colour and hard-wearing qualities available.

We offer a Maintenance Service on Memorials in which we visit the resting place twice a year, once in the spring and once in the autumn, to clean the stone and provide any upkeep needed to help take that pressure away from you. We also provide one-off cleans and repairs to Memorials when they need it to help get them looking their best again.

Our Factory is located in Crookham Village near Fleet alongside our offices where our Memorial Specialists are ready to help. We also have a Highstreet branch in Basingstoke. At both branches we have plenty of materials to view as well as styles of memorials and inscription examples.

If you require a helping hand while you are looking for a memorial for your loved one, look no further than Haven Memorials, contact us and make an appointment today.

EST.

HM

1987

HAVEN MEMORIALS

MONUMENTAL MASONS





Old Basing &
Lychpit Parish
Council

Neighbourhood Plan Update

The Old Basing and Lychpit Neighbourhood Plan was adopted by the Borough Council in July 2018. It aims to support sustainable development envisaged in the Local Plan consonant with the local environment and amenity of the Parish.

Your Parish Council now seeks to update the Neighbourhood Plan through a new series of local consultations.

The purpose of the Neighbourhood Plan is to guide development within the Parish and to provide guidance to any interested parties wishing to submit planning applications for development within the Parish.

View the existing Neighbourhood Plan on the Parish Council's website.

We now invite residents, businesses and community groups to comment on whatever aspects of the Plan they are interested in or concerned about, such as:

- Traffic and road safety
- Uncontrolled development
- Protection of the Loddon Valley

Watch out for more over coming months..... Get Involved



clerk@oldbasing.gov.uk



01256 462847



www.oldbasing.gov.uk



FREE*
Mirrored cabinet
or high raised
toilet with any
full bathroom
installation



★★★★★ | 9.19/10
Checkatrade.com

ahm
installations

Trustpilot
★★★★★
AHM is rated Excellent

Bathing a problem? We can help

- Wet rooms
- Walk in showers and baths
- Waterproof wall panelling
- Slip resistant safety flooring
- Automatic bidet loos
- Established family business
- Disabled Facilities Grants
- Grab rails, shower seats & raised toilets
- Zero VAT on disabled bathrooms
- Discounts for over 60s SSAFA and Ex Service personnel

Call for our friendly advice, free survey and quote

01256 805755

info@ahminstallations.co.uk

www.ahminstallations.co.uk

*Terms and conditions apply, visit our website for more details.



ON CALL 24/7
01256 445200

**HONEST LOCAL
PROFESSIONAL
DRAINAGE EXPERTS IN
BASINGSTOKE**

We specialise in

- Drain Unblocking
- CCTV Drainage Surveys
- No Dig Re-Lining Repairs
- Sewage Treatment Plants
- Drainage Fields
- Septic Tanks
- Soak-aways

25 Years Experience
No Call Out Fee
24 Hour Service
Family Run Business



www.SpeedyDrain.co.uk
Your Local Drainage Experts
Drains Unblocked from just £67.50



Be who you've always been... a star baker

At Dashwood Manor care home being a star baker doesn't stop when you make the journey into care. Our dementia specialists support each resident to live life as independently as possible. Bring your life with you to a place you can call home.

Award winning, person-centred care for over 40 years.

If you're considering care for yourself or a loved one call **01256 588717**.



Trusted to care.

Dashwood Manor care home
Basingstoke
careuk.com/dashwood-manor

care UK 

Old Basing and Lychpit Village Show

After a very difficult growing year in 2022 due to the drought, which resulted in fewer entries in the fruit and vegetable categories, your committee of volunteers is hoping for better weather this year.

The 2023 Show takes place on 3rd September 2023 at the Village Hall, so please put it in your diaries now and start planning what you might be able to enter!

The Committee has been busy over the winter months putting together a varied schedule with many new classes, which we hope will provide something for everyone.

Class 1 is the ever popular photograph of your hanging basket or planter and the deadline for this is 23rd August. All other classes are judged on show day. Above is the winning entry from 2022.



A new category in the Vegetable classes this year is "The Heaviest Marrow". This should be worth seeing and maybe something to interest the children in? I attach a photo from last year's Malvern Show to inspire you!

We have not had many entries over recent years in the Flower Arranging classes, so this year we are keeping it as simple as possible to encourage new (and previous) entrants. This year we are looking for an arrangement of flowers and foliage arranged in a container of your choice (bought flowers allowed). So even if you are a complete novice this is a class worth considering for this year.

In contrast, the inclusion of poetry classes for the first time last year was very successful, and showcased the local literary talent we have. So, this year we have increased the number of classes to include an Acrostic poem as well as a limerick and a piece of original poetry. Now is the time to get your thinking caps on if this is your thing!

There will be some minor changes in the Domestic baking section with the inclusion this year of a Gluten Free cake and 3 cinnamon buns. Due to comments received from a number of people we are no longer having a "men and boys baking class" but of course all classes are open to everyone, (except the children's classes which are necessarily age restricted).

The photographic competition is always well supported and this year we have chosen subjects that we hope are inspiring yet inclusive. Exhibitors are able to enter 2 photos in each of the three photographic classes. Again, the Basinga will be sponsoring prizes for the photographic section.

We also have a "home-made drinks" category, so all you brewers out there please consider entering your results. The handicraft section has six separate classes ranging from art to needlecraft and this year will be including a class for "a hand-made candle".

The children's classes are very popular, with trophies, rosettes and certificates awarded, as well as a small monetary prize. We have taken on board the comments received regarding the art class for older children and this year it will be "A painting or drawing in any medium open to children aged 12 to 15", so there is opportunity for the older age group to display any artwork without being restricted to a particular subject.

The yellow Show Schedules, which are free, are being printed in March and will be available shortly after



at many retail outlets in the Village. We will also be having a plant stall at the Old Basing Carnival on 17th June and you will be able to pick up a show schedule there, which includes the entry form, and you can come and chat to us if you have any questions. All details for 2023 will be on our website shortly at <https://www.oblvs.org.uk/> together with some hints and tips on how to prepare your entries, together with photos of prize winning entries from previous years. An entry form is also available on the website to download. Your entry form and entry fee needs to be received by Wednesday 30th August to enable the Committee to set everything up in time for the Show.

The Village Show committee looks forward to seeing many more entries in the Show this year. Remember if you have not been to the Show before or you want to find out more, then come along to the Village Hall on the afternoon of 3rd September at 2.30pm, have a piece of cake and a cup of tea, buy a ticket for the raffle and have a look at what the residents of Old Basing and Lychpit can do. Maybe if you do not enter this year, you will be inspired to enter in 2024!

Old Basing Women's Institute

After a very busy and successful 2022, the Old Basing WI met again in January for our first meeting of 2023.

This was a Members' own meeting (without a speaker) and we all had a good chat and enjoyed some delicious cakes made by one of our Members after we had voted on which Resolutions we wished to be put forward to the NFWI at its annual conference in June. We were also pleased to welcome the Reverend Jo Mulliner to our meeting to introduce herself to Members.

At the end of January, 24 Members met at Barton's Mill restaurant for a lovely evening meal. We enjoyed the roaring fire and were well looked after by the staff as the photos show.

Our speakers for the upcoming few months cover a wide range of subjects. We have Nigel Knott coming to talk to us about Canine Partners- Amazing Dogs Transforming Lives, and in March Robbie Sprague will be telling us about poetry to appeal to every mood and emotion. We will be making our own entertainment in April and we will be holding our Annual Meeting in May.

Each of our meetings follows a similar format. We usually have an invited speaker for about 45 minutes followed by refreshments and a chat. There is a formal part to the meeting either before or after the speaker, where the President addresses the Members and advises them of upcoming events and activities. We hold a monthly raffle and a competition which is usually related to the talk and is judged by the speaker. We also encourage Members to bring a flower from their garden each month which is judged by popular vote.

Meanwhile our craft group meets regularly once a month and this year we have been learning how to do modular knitting (see photo) led by our very own Member Jan Blight. Our February craft meeting will be a trip to Whitchurch Silk Mill to view the embroidery exhibition, followed by an optional lunch and in March we will be learning how to do wet felting.

Later this year we are running a full day coach trip to Pamela Lewis's garden near Devizes where we will have a tour of her garden, followed by lunch, a flower arranging demonstration and afternoon tea before returning home.



We also plan to have a skittles outing, to take part in the Loddon Group Quiz, and we will have a stall selling cakes and crafts at this year's Carnival in June. Do come and find us for a chat. We hope there is something for everyone to enjoy at our friendly group.

Our speakers are all booked up for the 2023/24 season, and

next year will be our 105th Birthday, so no doubt we will be celebrating that as well! So, if you would like to find out more about our long running and active group, then please contact our President Sue Stewart on oldbasingpres@hampshirewi.org.uk

We meet on the first Tuesday of every month at the Parish Rooms St Mary's at 7.30pm. Our next meetings take place on 7th March and 4th April.



County Councillor Report

Cllr. Elaine Still

Potholes

Winter is the time of year when we begin to see more potholes forming on Hampshire's Roads. Potholes form for many reasons, hydraulic action, structural weakness, subsoil movement for example. At this time of year though, and particularly after the range of weather we've had in the last fortnight, they are more likely to form. Water penetrates cracks in the surface of the road during rain, when it freezes it expands, causing the structure to break down, and as vehicles pass over it that weakness gets worse until such time as the surface breaks away creating the pothole.

Hampshire Highways can't fix them unless we know about them, so PLEASE, if you see a pothole in your road or when you are out and about, take a few moments to report it to the Hampshire County Council online system via the link shown later in this article. Reporting it here is the best way to ensure it is fixed as quickly as possible. We prioritise the busiest routes first when fixing issues, so if it's a minor road it may take a longer time to get to it, but we will fix it.

Thefts of Drain covers

With metal prices high we are once again facing a high number drain cover thefts – leaving deep openings in the road surface causing a hazard to drivers, pedestrians and cyclists, and resulting in significant expense to council taxpayers. To bring those responsible to justice, we need you to be our eyes and ears on the ground anyone who sees any suspicious activity involving highway apparatus or has any information about a drain cover theft should report this to the Police as soon as possible.

I would also be grateful to anyone who spots a drain cover is missing to let us know quickly so the Highways team can take appropriate action to keep our roads safe. To report a missing drain cover call us on 0300 555 1388 (8:30am to 5pm, Monday to Friday). In emergency situations outside of usual office hours, call the Police on 101, but if you feel road users could be in imminent danger, dial 999. Suspicious activity or information about stolen drain covers can also be reported to Hampshire Police via their online reporting system.

While those responsible for the thefts might think this is a victimless crime, they are profoundly mistaken. They are risking residents' safety and stealing from the public purse.

In 2021 the cost to replace 68 stolen drain covers exceeded £100,000 – this is OUR money, yours and mine as taxpayers.

As soon as we are aware a cover has been taken, our Highways team deploys cones or barriers to reduce the risk of harm to road users and they will assess the type of replacement covers needed so new ones can be ordered and fitted as soon as possible.

Our teams are also exploring the availability of replacement items made from innovative composite alternatives that have no scrap value. However, these are unlikely to be suitable for all sites and they are generally only intended as a temporary fix. Please therefore take extra care on the roads while we do all we can to make the affected areas safe as quickly as possible.

LINKS TO REPORTING PROBLEMS TO HAMPSHIRE COUNTY COUNCIL ARE:

Potholes: www.hants.gov.uk/transport/roadmaintenance/roadproblems/potholes

Tree/hedge problems: <https://www.hants.gov.uk/transport/roadmaintenance/roadproblems/treehedge>

Flooding/drainage issues: www.hants.gov.uk/transport/roadmaintenance/roadproblems/flooding

Pavement problems: www.hants.gov.uk/transport/roadmaintenance/roadproblems/paving

Problems with rights of way: www.hants.gov.uk/landplanningandenvironment/rightsofway/reportaproblem

Please take a photo of a problem if you can do so safely. This helps the team to assess the severity of the problem and better identify the location.

Once an issue has been reported, you'll be sent an email with a reference number to track progress and the report.



If this is not actioned in a reasonable timescale or in a satisfactory manner and you would like me to follow this up then do please forward the report to me to chase on your behalf.

CHANGES TO DISPOSAL OF UPHOLSTERED SEATING AT HAMPSHIRE WASTE AND RECYCLING CENTRES

This year sees some changes to the way Hampshire's Waste and Recycling Centres operate as we look to increase recycling rates and stop harmful pollutants like microplastics entering the environment. There is now a national requirement that upholstered seating is treated separately from other waste and incinerated safely to stop pollutants from entering the environment. The only difference you should see is a separate container for upholstery at your local waste and recycling centre.

As items of upholstered seating furniture such as dining chairs, armchairs and sofas are likely to contain pollutants which stay intact and do not break down, we are required by law to ensure these

items are diverted from landfill, separated from other waste and disposed of carefully at one of our energy recovery facilities. This means that they will be incinerated to generate electricity.

We also ask that you avoid breaking up upholstered domestic seating, as this increases the potential for material to escape into the environment, – please ensure any loose material, such as coverings, is bagged for disposal at an HWRC.

The range of upholstered seating items which now need to be segregated for specialist disposal includes sofas; sofa beds; armchairs; kitchen and dining room chairs; stools and footstools that are upholstered; home office chairs; futons; bean bags; floor and sofa cushions.

We would encourage you to first consider offering suitable items of upholstered seating furniture for re-use by donating to charity, privately selling on or re-using wherever possible.



Volunteers and Lord Lieutenant of Hampshire after our Queen's Award presentation

Have you just a few hours a week to spare assisting older people get out and about?

Basingstoke NeighbourCare provides accompanied car transport for older people with limited mobility, or who lack confidence to go out on their own. We enable them to attend hospital appointments, GP Clinics, opticians, dentists and social clubs.

All this is made possible by our volunteer car drivers who are organised by our office-based Coordinators.

We need a few more volunteers so more of our older

people can get out and about. You need only be available for a few hours a week - you

can choose. NeighbourCare reimburses all mileage at 45p a mile. Insurance is usually included in your current comprehensive policy.

To find out more please talk to our Coordinators on 01256 423855 (Monday to

Friday 9am to 4pm) or look at our website

www.neighbourcare.com or email

info@neighbourcare.com

for an application form and more details.

Basingstoke Neighbour Care
The Orchard, White Hart Lane,
London Road,
Basingstoke, RG21 4AF
Registered charity no 1154382



CARNIVAL

The Old Basing and Lychpit carnival is back. After 2 years without the annual village event, the committee are delighted to be able to bring back the much-loved event that has been part of the village's history for over 50 years.

2023 will be the 50th Old Basing and Lychpit Carnival and with that in mind our theme this year is Golden.

Frank Molloy said, "I was thrilled to be voted in as the chairman for the 2023 Carnival. It has been part of village life for many years and I am excited to see what 2023 has in store".

John Berger who has been a part of the committee for many years caught up with Beryl Viner to look back at how the carnival began.

Graham Viner attended the Overton Carnival in 1970, came home, sat with Beryl and said "if they can do it, so can we". From there the carnival was born. For the first 2 or 3 years it was fondly known as "Scouts Carnival and Guides Carnival".

In the following 3 years it was run by the Village Hall committee and changed its name to the 'Village Hall Carnival'

In 1981, it went back to the scouts and guides until 1985 when it was formally known as the Old Basing Carnival.

It was run by Graham and Beryl for many years and created thousands of memories.

John also caught up with Joan Pitt, who had wonderful memories to share of the carnival

"I always remember the carnival being a week-long event! It would start with activities such as 5-a-side football with both men's and women's teams, you'd see the tug of war and others games on the school, We even had a bed race that started in Cavalier road.

I remember one year, we had a giant ball that would be kicked, pushed and rolled around the field, the teams from Basingstoke were quite competitive so it wasn't unusual for players to end up with an injury.

The procession would be held on the last day of the carnival. Various organisations would enter with floats and the local schools and nurseries would be on foot parading through the village.

Long with the finals of the games played throughout the week.

The arena was packed full of people. We'd hold the finals for the games we had played during the week, and the keep-fit ladies would put on a show in the arena. There were so many stalls including coconut shy, skittles, how many jelly beans in the jar, guess the weight of the cake and many more.

I'm excited to see what is in store at the 2023 carnival."

John will be setting up a 'memory corner' which will have

an array of photographs, videos and memorabilia from previous carnivals. Make sure you join him to step back in time and celebrate the carnival history.



B&M FENCING GARDEN & LANDSCAPE SUPPLIES

Panels	Reclaimed Sleepers	Rolawn Turf
Trellis	Softwood Sleepers	Top Soil
Concrete Post	Oaks Sleepers	Landscape Bark
Closeboard Panels	Decking	Natural Sandstone
Sharp Sand	10mm Gravel	Paving Slabs
Building Sand	20mm Gravel	Block Paving
Ballast	Decorative Stone	Grano Dust
Scalping		



Mon-Fri
7.45am – 5pm

Fencing
Fitting Service
Free Estimates

Natural Sandstone
Large Stocks on site
Display Area

Delivery Service Available

01256 762739

www.bmfencing.co.uk

enquiries@bmfencing.co.uk **Reading Road, Hook, Hants, RG27 9DB**

How can you get involved:

Stalls

Are you a registered charity or a not-for-profit organisation? We'd love you to join us for the day and help raise money for your organisation.

Do you have an idea for a stall? Maybe guess the weight of the cake or a coconut shy?

You can book a stall for £15 and raise funds whilst entertaining.

Are you a private company or small business that would like to promote or sell your goods or services? You can book a stall for £25.

Contact Sarah at oldbasingcarnival@gmail.com for more information on how to book.

Helpers on the day

Whilst we have a full committee of people, we're always in need for people to help out on the day, maybe a procession Marshall, taking entry fees at the gate, serving tea or donating a cake for the tea stall.

We need you. Please email oldbasingcarnival@gmail.com if you can spare a few hours

Arena

Do you have a special talent or are you part of a group that can entertain over a thousand people? We'd love to hear from you. If you'd like to be part of the arena line-up, contact Julie at oldbasingcarnival@gmail.com to find out more information.

Procession

Would you like to join the walk of fame and enter our golden themed procession? (we'll accept yellow too!) Email Vicky on oldbasingcarnival@gmail.com

Raffle

The raffle at any event is always an excellent way not only to raise money but to give businesses the opportunity to support the carnival without needing to give your time.

We welcome any donation, big or small.

Email Hannah at Oldbasingcarnival@gmail.com to find out how you can donate a prize.

Programme

Would you like to advertise in this year's programme? Email Vicky at oldbasingcarnival@gmail.com to find out about pricing and placement



MARK SMITH
PLUMBING & HEATING
Established 1971



01256 782410



All Aspects of Gas, Plumbing & Heating
Kitchen & Bathroom Installations
Solar & Air Source Heat Pumps

info@marksmithplumbing.co.uk
www.marksmithplumbing.co.uk

Showroom & Office
32 Oakley Lane, Oakley, Basingstoke, Hants RG23 7JY



MARK TRODD
MVS Ltd



MOT CENTRE
MOT • Servicing • Vehicle Diagnostics
01256 329350

Unit 7, Roentgen Court, Roentgen Road,
Basingstoke, Hampshire RG24 8NT



MONSTER TREE SERVICES

SERVICES

- Domestic and Commercial Tree Work
- Tree Pruning, Thinning and Maintenance
- Tree Felling and Limb Removal
- Stump and Root Removal
- Site Clearance
- Hedge Cutting
- Logs and Firewood Delivery

City & Guilds NPTC



Follow Us

Contact us for a free no obligation quote or consultation
t: 07872 567381 w: www.monstertreeservices.co.uk
e: ross.stickland@monstertreeservices.co.uk

VILLAGE CAFÉ

Spring is a time of new beginnings, nature at her finest and what better to celebrate the coming of spring than lambs and daffodils.



It's the time of year we all look forward to, seeing the first blooms appear and the leaves beginning to bud, makes us all smile and brings the promise of brighter, longer days.

As you know, the Village Café is volunteer run and any profits we make are used to fund local

community projects. We are all proud to support our community and always look at projects which benefit a group. Most recently, we have made a donation to St Mary's Junior School who wanted to purchase some new sports and play equipment following a refurbishment of their play area. This will benefit a large number of children.

We have also provided afternoon tea to the Ivy club members, our wonderful team baked up a storm to provide cakes and scones for them all to enjoy at one of their regular afternoon meetings in February and they were extremely appreciative.

At the Village Café, we are now looking forward to opening weekly, on Friday afternoons at the Parish room, 2-4pm. Our weekly cafes start on 21st April and will run until 21st July. We will then take a break and reopen on 8th September.

We are all aware that the current cost of living has impacted on everyone but here at the cafe, we are not increasing any of our prices. We are a community café and our aim is to support the local community so you can pop along and still enjoy delicious cakes for £1:50, we are always pleased to see you and promise a friendly welcome to all.

Our Bake a Smile initiative has proved incredibly popular. This enables members of our community to be nominated to receive a little treat delivery, just to make them smile. We have delivered to over 60 people and are always greeted with surprise and a smile. We have operated this on a weekly basis since last October but as we are opening weekly from late April, we will then carry on this initiative on a monthly basis, so please keep your nominations coming in.

You can nominate an individual, a group of people or a family. Please message us, via our Facebook page, with details and why you think they deserve a slice of cake. Nominations will be considered for

members of Old Basing and Lychpit community so let us know and helps us "bake someone smile".

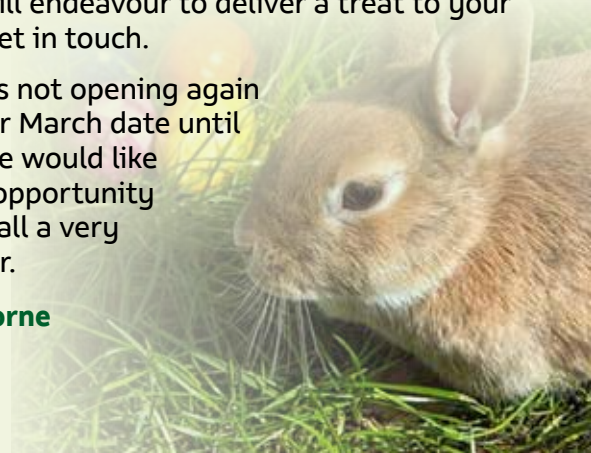
We are a small team so are always looking to welcome new members. If there is anyone who has a couple of hours to spare on a Friday afternoon and would like to help out, please let us know. Due to our popularity, we are always looking for bakers too, we would love to add a few more names to our list. If you love to bake, do get in touch, via our Facebook page or just speak to any team member at the cafe when you visit. We do not expect you to bake every week, we do have a rota system and you can choose as and when you would like to bake. Why not join us as part of the The Big Help Out, which is an initiative planned for the Kings Coronation weekend, it is aimed at encouraging people to try volunteering in their community and join the work being undertaken to support their local areas. By volunteering for the café, not only will you meet some lovely customers but you will be helping us raise funds to support local needs which is incredibly fulfilling.

Opening dates for the cafe, and to add to your diary for the coming months are –
 Friday March 3rd, this will be our last monthly cafe and we will then open weekly on:
 21st and 28th April
 5th, 12th, 19th and 26th May
 9th, 16th, 23rd and 30th June
 7th, 14th and 21st July.
 We are open between 2-4pm at the Parish room.

We are planning that the café on 5th May will have a Coronation theme and to celebrate this special occasion, we will be offering a free slice of cake to anyone in our community who has a birthday on 6th May. All you need to do is contact the cafe via messenger on our Facebook page, visit the cafe during opening hours on 5th, providing proof of your date of birth and enjoy a cake on us. If there is anyone who has a birthday 6th May but is unable to visit the cafe due to mobility or health issues, we will endeavour to deliver a treat to your door so do get in touch.

As the café is not opening again following our March date until 21st April, we would like to take this opportunity to wish you all a very Happy Easter.

Deborah Thorne





www.nyasonstrans.co.uk 01256 242 121 07438 232354



Free quotes for transport National & International

Our services

Traction only
Containers trailer
Curtainsider trailer
Dry box trailer

Flatbed trailer
Low loader trailer
Refrigerated trailer
Hiab/Crane



01256 242121

office@nyasonstrans.co.uk

Basingstoke RG24 8AG

Contact us at any time, 24 hours a day, 7 days a week



Katrina



I lost
5st 11lb
in 5 months

You can too!

Lose a stone a month.

Start now
Scan me!



Contact your personal Mentor, **Claire Bonner**, today for our latest offers!

07970 251715

claire.bonner@lighterlifecounsellor.com

Mentor code: BONC02 www.Lighterlife.com

Golf days for Old Basing 2023

The Old Basing and Lychpit carnival is back. After 2 years without the annual village event, the committee are delighted to be able to bring back the much-loved event that has been part of the village's history for over 50 years.

It's now almost twenty years since Steve Western and myself came up with the idea of a fund-raising golf day tailor-made for the many golfers who reside in Old Basing and Lychpit. Players may be unaffiliated to a club or might be members of any one of the local clubs so rarely get the opportunity to play with or against one another, hence the idea of a socially collective event that would also yield a benefit for a good cause. Over the years we have raised around £5000 which has been spread amongst several local and national charities such as St Michael's Hospice, The Poppy Appeal and Dementia UK. The great thing about that selection is that YOU, the WINNER, gets to choose where the money goes, so, make a note of Friday September 15th and have a go this time around.

Now that day is our final one and is a way off, so in between we have two more fun days, the first being in March and is the ideal game for blowing away the cobwebs in one's game. It also presents the ideal opportunity for those newcomers to the game who can hold a club but might not feel confident enough to play individually. It's called a Texas Scramble and involves teams of four where you all get to play each shot from the best position that you can fashion on each hole. I can send you all the rules of course which you'll get nearer the day anyway but for now, have a chat with three mates, note Monday March 27th and ask me for an

entry form a month or so before. I can promise you a very enjoyable game of golf!

Our second event of the year, towards the end of June, Monday the 26th to be exact, is for me personally one of the more important fund-raising days, with it being specifically run for Old Basing Royal British Legion and The Poppy Appeal. The event is named ARMED FORCES DAY and coincides with the Nationally signaled occasion. Our event features individual, team and secret pairs competition plus a host of other chances to pick up a prize, not only on the course, but afterwards when a raffle and auction will take place after the included meal.

All these events are booked and partially paid for at Sherfield Oaks Golf Centre and we will play on both courses there, taking into account any course improvement works that may be continuing at the time.

I very much look forward to seeing old and new faces this season so please do have a go. The events are arranged for you and can only be a success if supported by you.

Rick Bourne **07714 289157** and
Steve Western **07920 840985**



The photo shows His Worship the Mayor, Cllr. Paul Miller and the Lady Mayoress chatting with one of the teams at the start of the Armed Forces Event in June 2022.

Bowls club looks forward to anniversary year

In the closing months of 1947, a handful of enthusiasts met in an Old Basing pub. There was just one item on the agenda: 'shall we form a bowls club in the village?'

It was ambitious; there were too few of them to create a team and they had nowhere to play. What could possibly go wrong? But they took a chance. Yes, they would look into the practicalities and agreed to meet again in the new year.

Come March 1948 and with a growing level of interest from would-be players, and support in principle from the parish council to help find a suitable bit of land, they went ahead and formed Old Basing Bowling Club.

From a slow start – all games in the first year or so had to be played away – the club has grown into the vibrant and active club it is today. With just shy of 100 members, this year the club celebrates its 75th anniversary with a host of activities and special games.

competitions to local leagues and external knock-out competitions. It promises to be a full, fun-packed season of bowls and hopefully one of which the founding members would have been proud.



Today's members are a mix of those who compete at county level down to those who really just want a weekly game and a bit of a chat. With ages ranging from bowlers in their 40s to those in their 80s, new players are always welcome whether you are an experienced bowler or are new

to the game.

Fancy a go?

For those who would like a taster, the club is holding open days in the spring – this year on Saturday April 22 and Monday May 8 (both 10am–2pm), that's the bank holiday of the coronation weekend. Just turn up.

www.ldbasingbowlingclub.co.uk



YEAR
ANNIVERSARY
CELEBRATIONS

Royal connections

There is a 75th anniversary game arranged against The Royal Household at its ground in Windsor Great Park, a stone's throw from Frogmore Cottage and down the road from the castle. That game will be the weekend before the King's coronation.

There are also games arranged against a team representing Bowls Hampshire and one against an array of past presidents from clubs across the county. In between all this is the club's annual tour, this time in the Eastbourne area. Plus, of course, there will be the usual season of games from friendlies against neighbouring clubs and internal

Spencer & Peyton Ltd

Funeral Directors and Monumental Masons

24 hours a day

3rd Generation family owned and run since 1961

Pre-paid funeral plans discussed without obligation

380 Worting Road
Basingstoke, RG22 5DZ
01256 323165

7 London Road
Hook, RG27 9DY
01256 761717

Trading Standards approved

ON SITE FLORIST

01256 355556
www.theflowergirlflorist.co.uk

spencerandpeyton@btconnect.com
www.spencerandpeyton.co.uk

THE FLOWER GIRL

Letters from a Longbow Archer

When considering this season's article, I struggled to decide what to write about. Should it be something silly, something inspirational and world changing, or something about the health benefits of archery – the long walks interspersed with bending down to collect arrows that strayed a little too far off the target.

Maybe the archer who has smashed the most club records during and since lockdown. But recent events have given me more interesting things to talk about; when things don't go well; those patches that all people, sports or otherwise go through.

I think I've mentioned in the past that archery is easy to learn, but really hard to master. It is an amazing feeling when everything comes together and it's so effortless. But I think it's like learning to rub your tummy and patting your head whilst jumping on one leg singing the National Anthem backwards, and don't forget to smile darling, you're having fun!

When all is going well and you have achieved the archery equivalent of Nirvana you wonder what all the fuss is about, and you go up to the line and shoot with a smile...it's at that point someone might helpfully suggest that you are not drawing the string back to your chin. Bam! Everything that was second nature starts to unravel as self-doubt creeps in and you just can't seem to get back to that wonderful headspace. You are your own worst enemy as you start to overthink everything from string alignment, following through on release, keeping your arm bent, and oh yes, coming back to your chin on full draw! Now, I don't want to make it sound like it's too much like hard work, but anything in life worthwhile is going to have a rocky patch; where you are wracked with self-doubt and too much navel gazing. The hard bit is staying positive and working your issues through. It's then you seek advice from those around you with expertise. Recently I decided to travel to South Wales to seek such advice, and spent 5 hours with a lovely young man called Adam, who watched how I shot and realized that a large chunk of my issues was caused by something as simple as resting my index finger on the top of my arrow when I was at full draw. The answer; to surrender my beloved shooting glove in favour of a tab. It seemed like such a ridiculously simple solution and I doubted it, but

he was absolutely right and while I was there things started to come together as it had once been – Grand Master Bowman, here I come?

However, left to my own devices, odd little quirks have crept in, leading to more frustration and a few choice words about giving it all up. The thing to remember is that it will get better, that flaws and foibles can be sorted (or find work arounds to accommodate them), but only by carrying on and to keep trying. I may never be a Master Bowman again, but that's okay. I will continue to enjoy the challenge; shoot, miss, repeat. I will be able to rub my tummy and pat my head whilst jumping on one leg, but maybe I'll have to sing the National Anthem forwards instead. And then I might just offer some sage advice to some confident archer on their string position....mwahahaha.



In Old Basing archers there is such a diverse group of people, quirky soles (me), mums; electronic experts; civil servants; children; nurses and retired 'teenagers' who are enthusiastic and bonkers enough to get up early and stand in the blazing sun, or pouring rain and howling wind optimistically muttering " 'tis but a passing breeze". As a rule, I try to keep people anonymous in my articles, but I would like to make a special mention here, our club president and longest serving member of 40 + years, Terry Cootes.

He has been a member, a coach, a chairman and friend to all. He was there when I first tried archery at 11; he was there when I came back at 17 and was still there when I returned after I had my children. TC you are a sage and a gentleman and it has been my privilege to shoot with you and when it's all going wrong, you offer the best advice and even better hugs. I'm not sure I can forgive you for your upcoming move to Bristol, but our loss is their gain we send you off to your new club with all the love in the world and us long bowers of a certain age will continue to use the speciality arrow loose, The Cootes Flourish!

This Summer at Old Basing Tennis Club

It's not long until our summer tennis season officially starts on Tuesday 28 March 2023 although some of us have been playing throughout the winter.

Old Basing Tennis Club is keen to welcome new members of all ages and abilities to play with family and friends or to come along to our various club nights, afternoons, and coaching sessions where you mix in with other players.

- Club nights are on Tuesday and Friday from 6pm until dusk.
- Club afternoon on Wednesday from 2.30pm.
- Club morning on Sunday from 10am-12.00 noon.

Our two coaches Ben Jubin and Steph Catlin, run drills and coaching on various days and we run various league teams if you're interested in more competitive tennis.

We hold regular social evenings on a Friday after play and our Finals' Day on 2 September will conclude with a popular barbecue.

We have excellent facilities with four newly surfaced courts, a clubhouse with kitchen and changing room, and we use an App allowing you to book a court so that you can always get a game. We also have a defibrillator on our outside wall for all to use if needed.



To find out more information about Old Basing Tennis Club which is situated on Riley Lane, Old Basing RG24 7DH next to the cricket/football pitch, please email obtc.information@gmail.com or see our website or Facebook page.

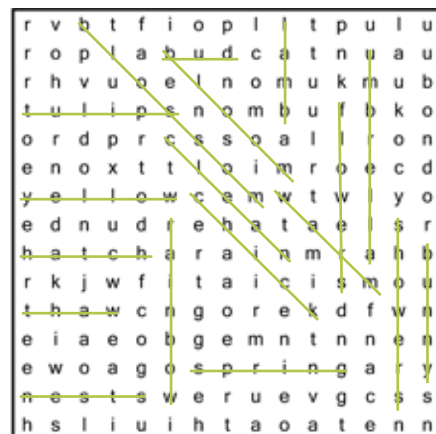


Children's Corner Answers

Spring Word Scramble

Horse	Dogs
Pigs	Sheep
Cows	Goats
Ducks	Geese
Chickens	Cats

Spring Word Search



Spring
Showers
Tulips
Hatch
Lamb
Blossom
Yellow
Bud
Rainbow
Clean
Flowers
Thaw
Chick
Bunny
Nests
Warm
Umbrella
Bloom

**We take
the stress
out of moving**



Bounce into

SPRING

with a new start

Call now
for your

**FREE
VALUATION!**



Loddon
Properties

Open 7 Days A Week
01256 808 454

www.loddonproperties.com