

S U M M E R E D I T I O N



Old Basing & Lychpit

Parish Council Community Newsletter

www.ldbasing.gov.uk

SUMMER 2023



The Sun Shone for a Glorious Coronation Big Lunch at Old Basing Recreation Ground on 7th May 2023



The sales and lettings experts

Here at Belvoir we believe that property is personal and that is why we make it our goal to support you at any stage in your property journey. Whether that be buying, selling, letting or becoming a tenant.

Contact one of our expert advisors today to discuss your next steps.



Because property is personal with...

BELVOIR!



belvoir.co.uk/basingstoke

Sales - 01256 811220

Lettings - 01256 830800

Contents

Chairman's Report – Summer 2023	4
Parish Notes	6
A Note from Onnalee Cubitt	8
Neighbourhood Plan Update	10
Old Basing Carnival	12
Old Basing and Lychpit Village Show	14
St Mary's Church	14
The National Garden Scheme	16
County Councillor Report	18
Meeting & Party Venues in Old Basing & Lychpit	19
Neighbourhood Watch	20
The Ivy Club	21
Buying Tickets Safely Online	22
Activities for older people at Leisure Park	22
Old Basing Infant School	23
Lychpit Community Residents Association	24
Childrens Corner	26
The Village Cafe	28
Old Basing Womens Institute	29
Policing Basingstoke	30
Able Community	31
OBLEC	32
FOOBS Trail and Fun Runs 2023	37
Old Basing Tennis Club	38

Please support local businesses

A big thank you goes to all the local businesses that have advertised and supported this newsletter thereby enabling the Parish Council to produce this quarterly publication at no cost to our residents.

However, the Parish Council makes no warranty in relation to the content of any advertisements placed in the newsletter and shall have no liability for any losses in relation thereto. Furthermore, the Parish Council makes no endorsements whatsoever with regard to any advertisements.



Volkswagen • Audi • Seat • Skoda

SERVICING AND REPAIRS • GENUINE PARTS • MOTS



Hampshire's
leading
independent
specialists

SJB
AUTOTECH
VOLKSWAGEN AUDI SEAT SKODA

📞 01256 477 411

🌐 sjbautotech.co.uk



Providing an outstanding
service for over 20 years.
Eastlands Court, Wade Road, Basingstoke RG24 8PL



L TITCOMBE & FAMILY

Independent Funeral Directors



Personal, respectful and attentive service

It is usual for people to be unsure of what to do in the immediate aftermath of a bereavement. We will help guide you through the initial steps and provide advice on other matters of importance you may need to think about when someone you know dies.

We are here when you need us most

24 hours a day

All aspects of Funeral Arrangements undertaken

8 Swan Street
Kingsclere
Newbury RG20 5PJ
Tel: 01635 299900

4 Elmwood Parade
Basingstoke
RG23 8LL
Tel: 01256 476366

www.tmfunerals.co.uk



Chairman's Report – Summer 2023

Local Plan Housing – There was a very successful public meeting and launch of The Parish Council working group OBLEC, on 15th April. Over 200 people attended to hear speakers outline the threat to our Parish in the Loddon Valley. Worth repeating that it is not just about the immediate 2150 homes. If we lose this, then we can expect 9,000 homes. Full report elsewhere in this issue.

Food shortages – Delays in the Manydown project means that the fields there are being temporarily ploughed up for food production this year. The UK currently supplies less than 50% of its own food. Agricultural land is required now, let alone in the future when global climate problems reduce imports. Houses planned on our green fields across the Loddon Valley will not be edible.

Traffic – Inconsiderate and illegal parking around the Parish continues. The Parish Council is seeking advice from Hampshire Highways about the possibility of double yellow lines along The Street adjacent to the Bakehouse. Any proposals will be subject to full consultation.

The new path on Basing Road is now open providing a safe pedestrian and cycle link from The Street to the Hampshire Clinic and beyond into town. Work on the gas pipes in Old Basing continues with a rolling programme of road closures. On top of this, road repairs, yes including some potholes, add to the misery. Some may have seen TV reports of motorists in Oxford protesting over residential road closures aimed at discouraging car usage. Come to our parish if you want long term diversion disruption.

Recreation Ground Floodlights – The Parish Council has rejected Tennis Club plans for floodlights. We have a wider responsibility beyond the narrow confines of the Tennis Club. The installation of eight 10-metre-high lighting columns in the Conservation Area would have a detrimental effect on the sensitive landscape.

Old Basing is a semi-rural and "dark sky" area which many of our residents value. The Parish Council believes this outweighs the small gain, estimated by the Tennis Club, of 20 new members. It is very disappointing and perplexing that BDBC has granted planning permission despite the objections of their own Conservation and Landscape Officers. The BDBC has accepted that, as Landowner, the Parish Council has the final say.

Lychpit Residents Association – Liaison with them continues and we will be taking forward some of their suggestions. These include Hampshire Highways issues. The Lychpit Residents will need patience and stamina when dealing with them.

Are we going to hell in a hand cart? – The Coronation celebrations were a welcome diversion from the ever-growing problems facing the planet today, all the way down to the humble Parish Council. Sir David Attenborough summed it up in a famous quote.

"There is no major problem facing our planet that would not be easier to solve if there were fewer people and no problem that does not become harder — and ultimately impossible to solve — with ever more. And yet there seems to be a taboo on bringing the subject into the open".

Cllr Peter Bloyce
Parish Chairman

Bramley Builders

can do this for you:

- Extensions / Conversions
- New Roofs / Roof Repairs
- All Brickwork & Groundwork
- Period Property Restoration
- Repointing / Rendering
- Driveways
- Plastering
- Block Paving
- Concreting
- Maintenance



Email: davistrevor529@gmail.com
Mobile: 07733 448980



Insurance work undertaken

tutors for
excellence //

GCSE English Tuition

Unlock your
potential!

Contact us today for
a free consultation!

call: **01256 320 986**

text: **07933 650 516**

email: enquiries@tutorsforexcellence.co.uk



Scan to message us on
WhatsApp



All Day Dining in the Glasshouse Restaurant

SEASONAL MENU | LOCAL PRODUCE | HOME-GROWN INGREDIENTS



To book your table please call
01256 783350 or visit
www.oakleyhall-park.com


OAKLEY HALL
HOTEL & RESTAURANT
★★★★

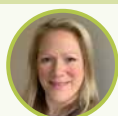
Rectory Road, Oakley,
Basingstoke, RG23 7EL

Parish Council

PARISH OFFICE



Sandra Tuck (Clerk)
clerk@oldbasing.gov.uk



Kate Hope (Deputy Clerk)
deputy.clerk@oldbasing.gov.uk

COUNCILLORS



Peter Bloyce
Chair,
Old Basing



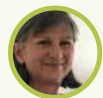
Murray Campbell
Vice Chair PC & Chair
Planning Old Basing



Alan Renwick
(Vice-Chair,
Facilities Management)
Old Basing



David Whiter
Old Basing



Kate Tuck
Old Basing



Francesca Maritan
Old Basing



Roger Doust
Lychpit



Steve Brown
Chair, Facilities
Management
Lychpit



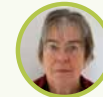
Charlie Butfoy
Vice-Chair,
Planning
Old Basing



Sheena Grassi
Lychpit



Mark Hermitage
Old Basing



Gillian Moore
Lychpit

Parish Council Meetings

Meetings are held in the Parish Office.

Members of the public are welcome to attend any meeting and those with mobility difficulties can be accommodated with advance notice. In addition to the main Parish Council meetings, held on the first Tuesday of each month, regular Committee meetings are held to discuss specific matters. These Committees are:

Planning & Development Committee

Second and fourth Tuesday monthly

Finance & Resources Committee

Three meetings per year, in February, June and October

Facilities Management Committee

Bi-monthly, on a Tuesday

Annual Parish Council Meeting

Every May

Annual Parish Meeting

Each year, held between 1 March and 1 June

Parish Notes

ELECTIONS 2023

Although 4th May 2023 was the Parish Council Election Day, the Old Basing & Lychpit Parish Council received only nine nominations for twelve seats and so all nine were re-elected as Parish Councillors. The remaining three seats will be filled by co-option at a Council meeting.

Serving the community as a Parish Councillor is a rewarding and interesting voluntary role, but it can also be a thankless one. We are very grateful to those people who are willing to give up their time to make decisions and steer the management of this most local level of government.

CORONATION CELEBRATIONS

It was wonderful to see so many join the Big Lunch at the Old Basing Recreation Ground on Sunday 7th May, in honour of Their Majesties King Charles III and Queen Camilla's Coronation. Thanks to Basingstoke & Deane Borough Council for their grant funding for the bunting and union flags for the children.

The Parish Council presented each child who attends Old Basing Village Nursery School, Old Basing Infants School, and St Mary's Junior School with a commemorative pin badge to mark the occasion. These seemed to be very well received. There are a small number left over and, if your child lives within the Parish but does not attend one of the above-mentioned settings, you are most welcome to collect one from the Parish Office for them.

LYCHPIT COMMUNITY

Hampshire County Council has recently carried out some improvements to the Courtyard at the Lychpit Centre (see photo) and it's lovely to see the area under the tree looking so much tidier.

Please take a moment to read the article written by the Lychpit Community Residents Association on page 24 about the INTEC Warehouse proposals which will significantly impact residents living in the Lychpit area adjacent to this site.

BELLE VUE PLAYGROUND

Thanks to those Facebook users who took part in a recent poll to determine which of three possible multiplay units might be installed at the Belle Vue Playground. It was a close vote, but 'option three' clinched it and will be in place by August.

Do come and follow the 'Old Basing & Lychpit Parish Council' Facebook page to keep in touch with us and hear the news from the Parish Office on a day-to-day basis.

Diary Dates 2023

June	6 Parish Council Meeting	13 & 27 Planning & Development Committee	20 Finance & Resources Committee
July	4 Parish Council Meeting	11 & 25 Planning & Development Committee	20 Finance & Resources Committee
August	1 Parish Council Meeting	8 & 22 Planning & Development Committee	
September	5 Parish Council Meeting	12 & 26 Planning & Development Committee	19 Facilities Management Committee
October	3 Parish Council Meeting	10 & 24 Planning & Development Committee	17 Finance & Resources Committee
November	7 Parish Council Meeting	14 & 28 Planning & Development Committee	21 Facilities Management Committee
December	5 Parish Council Meeting	11 Community Partnership Evening	12 Planning & Development Committee



16 Viabes Craft Centre, 16 The Harrow Way, Basingstoke, RG22 4BJ

01256 474009

sales@jeanettesengravers.co.uk www.jeanettesengraving.co.uk

Old Basing VILLAGE SHOP.

Groceries – Quality Fresh Produce – Snack Foods – Soft Drinks
Tobacco Products – Toiletries – Newspapers – Magazines

We also deliver
newspapers to your home
with our daily paper round

T: 01256 464020
E: oldbasingshop@gmail.com



@Oldbasingvillageshop



10% discount for OAPs

Lady
PAINTER & DECORATOR
& SON

FREE ESTIMATES
01256 819785 • 07970 454226

20 years of experience



MARK TRODD
MVS Ltd

MOT CENTRE
MOT • Servicing • Vehicle Diagnostics
01256 329350

Unit 7, Roentgen Court, Roentgen Road,
Basingstoke, Hampshire RG24 8NT

hartdrives
and landscapes

Driveways • Landscaping
Paving • Stonework

Professionally designed. Beautifully constructed. **T: 01256 324 578**



hartdrives.co.uk

A Note from re-Elected Borough Councillor Onnalee Cubitt

Dear Residents,

I can't thank you enough for electing me to be one of your Borough Councillors. I promise I shall continue to fight for your interests, the Ward and the Borough. As many of you know I was expelled by the Conservative Group for daring to speak the truth and say in Full Council in October 2022 that neither the Conservatives nor Dame Maria Miller were blameless for failing to get the annual target numbers of houses built reduced. You voted for me as an Independent Councillor. This WILL make a positive difference.



Cllr Sven Godesen and Cllr Kate Tuck resigned from the Conservative Group in support. We work very closely together. The increasing strength of local independent voices in our Council can and will change things for the better. I am a local mum aged 57. I grew up in Weston Patrick and have been one of your Borough Councillors since 2008.

I love Basing and Upton Grey Ward. I love Basingstoke. I shall continue to fight to stop over-development around Basing, Lychpit, Cliddesden, Upton Grey and the villages. I shall try and protect the River Loddon, River Lyde and the Loddon Valley from yet more pollution, look after the Basingstoke Common, fight to keep the weekly bin collection, build council houses for our residents, protect the most vulnerable in our society, make Basingstoke Beautiful, protect the Council's financial support for the arts, the Anvil and the voluntary sector, help residents with planning matters and get things done for you. Most important of all I want to make sure local politicians actually do what they promise. We are under threat like never before.

Please contact me if there is anything I can do in relation to the Borough.

With kind regards,

Cllr Onnalee Cubitt

Cllr.onnalee.cubitt@basingstoke.gov.uk

07762 067 411

Dentalia
Helping the community smile

01256 353033
info@dentalia.co.uk
www.dentalia.co.uk

**EXPRESS
DENTURE
REPAIRS
SAME DAY
APPOINTMENTS
AVAILABLE**

0%
**FINANCE
AVAILABLE**

SKILLED HANDS MAKE COMFORTABLE DENTURES

There are many ways to restore missing teeth, from conventional or chrome supported dentures. In more recent years with the advancement in Dental Technology and the digital-age we can now offer computer designed dentures.

Don't want to have removable teeth? Ask about our affordable implant options and interest free credit that's available. Dentures mounted on implants can provide stability to a denture and let you enjoy the simplest things in life such as regaining taste, sensation and increased chewing function, meaning there's no need to avoid certain foods and it can eliminate

the need for sticky adhesives. Ask about the cost, you may be "surprised".

During the **DENTURE ASSESSMENT** the Clinical Dental Technician will review your individual requirements, so you can come to an informed decision. If required we may request you to see a dentist either here at Dentalia for ease or we'll quite happily liaise with your dentist to achieve the best result for you. Sometimes a second opinion can make these decisions easier, so don't hesitate to call today for a no obligation consultation

Contact us or pop in for a tea, meet the team behind the smile.

10 Plover House, Aviary Court, Basingstoke, RG24 8PE

B&M FENCING

GARDEN & LANDSCAPE SUPPLIES

Panels	Reclaimed Sleepers	Rolawn Turf
Trellis	Softwood Sleepers	Top Soil
Concrete Post	Oaks Sleepers	Landscape Bark
Closeboard Panels	Decking	Natural Sandstone
Sharp Sand	10mm Gravel	Paving Slabs
Building Sand	20mm Gravel	Block Paving
Ballast	Decorative Stone	Grano Dust
Scalping		



Mon-Fri
7.45am – 5pm

Fencing
Fitting Service
Free Estimates

Natural Sandstone
Large Stocks on site
Display Area

Delivery Service Available

01256 762739

www.bmfencing.co.uk

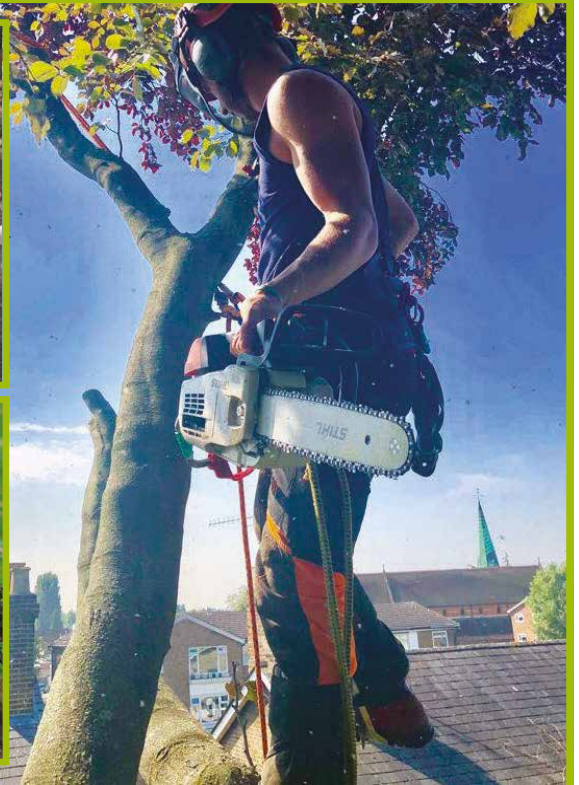
enquiries@bmfencing.co.uk Reading Road, Hook, Hants, RG27 9DB



Specialist Tree Services

Tree Surgery
Hedge Maintenance
Stump Grinding
Garden Mulch
10 million insurance

Checkatrade.com



Call for a *free* no obligation quotation

0118 973 3943

Email: info@jdbcontractors.co.uk

STRUGGLE TO GET IN AND OUT OF YOUR OLD BATH?



SALE
UP TO
20%
OFF**

FITS IN
THE SAME
SPACE
AS YOUR
OLD BATH!

SHOWER
STANDING
UP OR
SITTING
DOWN

NO WORRIES!

Bath Out – Shower In
FITTED IN JUST ONE DAY*

No Mess! No Fuss! No Re-Tiling!

Designed to fit in the same space as your old bath, the Shower Module's unique construction enables it to be **FITTED IN JUST ONE DAY!***

- Easy access - low step in
- Optional seat & grab rail
- Other door styles available
- Slip resistant floor
- Built-in shelving
- Hygienic easy clean tile-effect panels

FOR YOUR **FREE** BROCHURE CALL **0800 316 0110**

ASK FOR EXT. 81532 or visit www.aquability.com

AQUABILITY
 EASY, SAFE BATHING



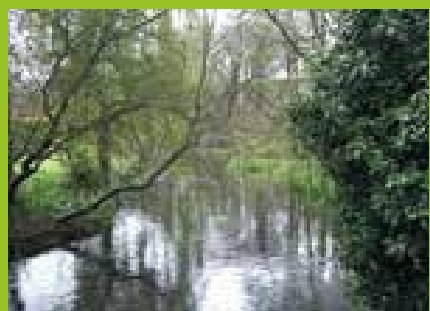
*Time based on straightforward fitting.
 **Not in conjunction with any other offer.



Old Basing & Lychpit Parish Council

Neighbourhood Plan

The Update



Since the Neighbourhood Plan was adopted in 2018, things have been changing . . . Basingstoke's, and the government's, thinking have been under review, and this will continue until the autumn. Some other things haven't changed – Basingstoke doesn't have a five year land supply and Manydown is still in limbo.....

All this puts the parish at risk of unwelcome development.

**To protect the best interests of Old Basing and Lychpit,
we are updating the Neighbourhood Plan.**

- To protect the Loddon Valley environment and green spaces
- To improve traffic issues
- To ensure development locally suits the needs of the parish
- To promote carbon reduction

We are reviewing the objectives of the Plan, and have had useful comment from the public. When our objectives are settled we will seek YOUR VIEWS through a questionnaire.



Photo Chris Hawkins

UNO_{de50}



Opening hours : Mon - Sat 9:30 - 17:30

THE
SECRET
GARDEN
DESIGNER JEWELLERY

The Secret Garden
12 Winchester Street, Basingstoke, Hampshire RG21 7DY
Tel. 01256 329015 // www.thesecretgarden.uk.com



**MONSTER
TREE
SERVICES**

NO JOB TOO
BIG OR SMALL

SERVICES

- Domestic and Commercial Tree Work
- Tree Pruning, Thinning and Maintenance
- Tree Felling and Limb Removal
- Stump and Root Removal
- Site Clearance
- Hedge Cutting
- Logs and Firewood Delivery

City &
Guilds
NPTC

Contact us for a free no obligation quote or consultation
t: 07872 567381 w: www.monstertreeservices.co.uk
e: ross.stickland@monstertreeservices.co.uk

Follow Us



Access Care

DO YOUR PARENTS NEED A LIVE-IN CARER?

CALL NOW
FOR A BROCHURE
& BOOK YOUR FREE, NO OBLIGATION,
LIVE-IN CARE EXPLORATORY MEETING
IN YOUR OWN HOME

01264 319 399



5 STAR REVIEWS

WWW.ACCESS-CARE.CO.UK



Specialising in MOTs,
servicing and general
repairs for cars,
motorbikes, vans and
other light goods vehicles

MOT TESTS

We have a dedicated MOT bay, and are approved to test Class I+II mopeds, motorcycles + motorcycle companions, Class IV Cars, vans + light commercials up to 3000kg, including quads

SERVICING & REPAIRS

We have a well equipped service bay with modern computerised Bosch diagnostic tools, providing servicing for all makes and models and fault diagnosis for computerised vehicle systems, plus engine repairs, clutch, brake, exhaust repairs/replacements, MOT repairs and body repairs

MOTORBIKES

Servicing for leading makes and models, fault code reading, Insurance/accident repairs, MOT repairs and paintwork



AA Certified

01256 810766 | www.rtgaiger.co.uk

Units 1 & 10, The Beresford Centre,
Wade Road, Basingstoke RG24 8FA

To advertise please call
01843 523030
or email info@communityad.co.uk

Bringing Nostalgia Back to Old Basing and Lychpit Carnival

We thought it important to confirm that the 2023 Carnival will have a different feel this year.

We as a committee recognise that there is a cost of living crisis so we've worked hard to plan affordable fun at the centre of this year's event. We understand that the pressure to spend money can sometimes feel overwhelming, especially when you have young children. Nostalgia is at the heart of the 2023 carnival with a variety of traditional games for all the family. You could try your technique at the Coconut Shy or test your reaction speed on Splat The Rat. How's your aim? Test it out on the Ring Toss or Ball In The Bucket. From Frog Flinger to Tic-Tac-Toe there is something for everyone.

We've set local children a Smartie tube challenge – can your little ones fill a Smartie tube with 20ps ahead of the big day? Remember when you could take a 20-pence piece to the sweet shop and choose your sweets? Well, we're bringing it back! No scales, and no price per weight. All our sweets will be 1p – 5p each. Just bring those 20p's and build your own bag of sweets.

With the arena providing a fun-filled afternoon of family entertainment, there really is no reason not to pay your £1 at the gate and enjoy an afternoon celebrating 50 years of Old Basing Carnival!

*Please note the regular Funfair will not be attending the Carnival this year.

FOOD AND DRINK

You won't get hungry or thirsty this year! Southern Bar Services and A Bit Of A Do Events and Catering will be looking after your refreshment needs on the day; stocking a collection of beers, wine and spirits along with special ale, Pimms and Cocktails. 'A Bit Of A Do' will also provide Vegan, Gluten free and vegetarian lunch options but don't worry, our traditional BBQ will be making sure you get your burger fix!

The ever-popular tea room will be serving home made teas and cakes in the Pavilion for everyone to enjoy. Have you offered to bake a cake yet?

LITTLE LUNCHES

Many of the carnival goers are, parents, Grandparents and Carers of children. We understand how tricky it can be to expect children to march for an hour, and arrive at the arena, tired and probably hungry. You'll be pleased to know

that we have devised our very own pick and mix 'little lunches'.

A sandwich, drink, and 3 other choices. All for £4. The little lunches will be quick and easy to purchase so no long queues for the little hungry tummies.

ROAD CLOSURE

The procession will be slightly shorter this year; starting at the RBL. The procession will walk down Crown lane and right onto The Street, they will turn right up towards the Bowls Club and enter the arena.

The procession judging will start at 11.30 before the Royal British Legion band leads the procession to the Recreation ground for around 12.15 when winners will be announced (timings are approximate).

We have sought an official road closure from Basingstoke and Deane Borough Council, so access to The Street and Crown Lane will be limited for the duration of the procession – please be sure to come out and line the streets; cheering on the local groups who have entered the procession competition!

We expect to reopen access to side streets as soon as the procession passes with all roads being fully accessible from 13:00

Can you make a little time to stay on at the end? After every outdoor event, there is always the job of closing down and cleaning up.

We're asking as many people as possible to help with the rubbish collection. We'll have plenty of bin bags and a skip at the ready.

Many hands make light work so if you could grab a bin bag and fill it with rubbish before you go home, we'd really appreciate it.

Your carnival committee pledged to bring the carnival back for the village in 2023 and we have done it! We really hope everyone enjoys this fun and historic event!

The OBL Carnival Committee 2022-2023





CHEQUERS

Independent Estate Agents

Successfully selling property
in the Old Basing & Lychpit
area for over 30 years!



"I would **highly recommend** Chequers Estate Agents. They were very **professional** and had **great knowledge of the area**"

Abbey, January 2023



For your free valuation call us on 01256 810018

www.chequersestateagents.co.uk

1 Winton Square, Basingstoke, Hampshire RG21 8EN

* Please note, if you have instructed another agent on a sole agency and/or sole selling rights basis, the terms of those instructions must be considered to avoid a possible liability to pay two commissions.

OLD BASING AND LYCHPIT VILLAGE SHOW

SUNDAY 3RD SEPTEMBER 2023

Writing this towards the end of April we have not had a good start to the growing season this year but don't despair as there is a lot more to the Village Show than long runner beans and perfect tomatoes. Have a look at the schedule which is now on our website – www.oblvs.org.uk – and will soon be at local distributors in paper format with its distinctive yellow cover. Last year we added two original writing classes to the schedule.

Their popularity has encouraged us to enlarge this section, so make the most of the dismal days and put pen to paper and come up with a limerick. The Domestic Section includes a gluten-free class and one for cinnamon buns – see if you can match the tempting ones from the Bakehouse or Indigo Bakes cafés! There are changes to the Children's Section which we hope will encourage more entries, especially as the Show comes at the end of the summer holidays. At a loose end – why not suggest they decorate a Pringle container or make a Lego model? Under Homemade Drinks we've included a class for ginger beer and the Handicraft Section has some new ideas.

It is all in the Schedule, including entry deadlines and the public opening in the afternoon, so do have a look.

The Carnival is back this year and the Committee is delighted to be able to join in. We will be in the procession and have our usual gazebo with plant stall and tombola. At the request of the Carnival Committee we will also have a raffle, the profits of which will go to the Carnival. Schedules will be available as will Committee members ready to have a chat and give you any advice on entering the Show. Thanks to a generous grant from Basingstoke and Deane Borough Council, via our local councillors, we have been able to purchase some payment machines so in future will be able to accept card payments as well as cash. The grant also covered a new gazebo – its first outing will be at the Carnival.

Old Basing and Lychpit Village Show

Sunday 3rd September – Old Basing Village Hall – open to the public from 2.30pm

St Mary's Church – Eco Church

Eco Church: A Rocha UK's award scheme for churches in England and Wales who want to demonstrate that the gospel is good news for God's earth.

St Mary's Church has registered with Eco Church working toward a target for the whole Church of England of achieving 'net-zero' carbon by 2030. The actions we take will count towards a prestigious Eco Church Award at Bronze, Silver or Gold level. With work completed we have reached the required level to apply for the Bronze Award with the work now continuing towards Silver and we would welcome any support.

The vision is for churches of all denominations to care for creation as an integral part of loving their neighbours and following God faithfully.

An Eco Church is based on a self-assessment with an external audit at Gold level of how the church is "caring for God's earth

in different areas of their life and work". The free online survey and supporting resources are designed to equip churches to express our care for God's world in our worship and teaching; in how we look after our church and land; in how we engage with our local community and in global campaigns, and in the personal lifestyles of our congregation.





There are children who need a forever family



Adoption could make that happen

- Single or a couple • LGBT+
- Already a family • Receiving benefits
- Renting or own your home

Welcome to Adopt South

Right now, we have toddlers, siblings and children who need a family of their own to be loved and cherished.

Adopt South is the Regional Adoption Agency for:



Hampshire
County Council



Portsmouth
CITY COUNCIL



SOUTHAMPTON
CITY COUNCIL



Call & Chat



Ask an Adopter



Join a Webinar



Attend an Event

Call our friendly team on 0300 3000 011 • adoptsouth.org.uk



To advertise please call
01843 523030
or email info@communityad.co.uk



BOOKINGS AVAILABLE ON
01256 357333

WALK INS ALWAYS WELCOME
CASH & CONTACTLESS ACCEPTED

FREE PARKING

44 BELLE VUE ROAD, OLD BASING, RG24 7JU



The National Garden Scheme – In Hampshire

Once again the BBC's Gardeners World Magazine is running the "Garden of the Year competition for 2023".

They are looking for Gardens throughout the UK, of any shape or size. Entry is free, so you have nothing to lose, by giving it a go. Closing date is midday on 12 June 2023. All the details can be found on the link www.ngs.org.uk/bbc-gardeners-world-magazine-gardens-of-the-year-competition-2023-now-open/

Maybe now is a good time to re-assess your garden:-

- 1) Is your garden constantly admired by all your family and friends and do you love to show people around the different areas ?
- 2) Do you enjoy explaining how different projects came about, and where you sourced your favourite or unusual plant?
- 3) Would you like to be able to raise money for nursing, caring and health charities?

If you are answering "Yes" to these questions – then you might be exactly the type of person the National Garden Scheme is looking for – OR – maybe you know someone else who could answer "Yes"!

By sharing your garden with others, through the National Garden Scheme, for two or three hours, you will be supporting our Nursing, Caring and Health Charities.

Maybe you would feel happier opening jointly with friends or neighbours.

Whatever you decide we will support you all the way, offer advice, supply all notices and signage, plus publicity, through social media and regular Newsletters to Garden Clubs, WI Groups, u3a's etc. You will be fully insured, by the NGS, during the open hours.



We will do all we can to ensure that "your" Garden Open Day is successful.

If you think this sounds like something you would like to consider for 2024, why not have an informal chat. If you drop me an email, with your phone number I will give you a call back.

I am really pleased to let you know about this next garden – right on the doorstep.

NEW for 2023, and featuring re-instated working Mill Wheel, which generates Electricity Win Win situation !

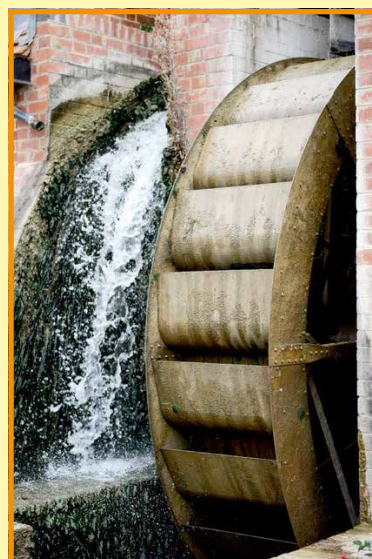
MILL HOUSE Vyne Road Sherborne St John RG24 9HU

Opening: Thursday 29th June & Sunday 2nd July 2pm to 6pm. Pre-booking available.

Admission: £5.00 children free. Card Payment accepted.

Refreshments: Home-made teas.

findagarden.ngs.org.uk/garden/44679/mill-house



Planted on heavy clay, the gardens of Mill House are relatively young, but occupy an historic site. They surround a recently rebuilt watermill which generates domestic electricity. Rural in feel, despite its proximity to Basingstoke, it features a number of differing zones.

Set in a private valley, the 3 acres of domestic fruit, vegetables, wild flowers and casual planting are arranged around a power generating watermill. Sustainability and low maintenance lie at its heart, to fit with modern life. Open views, set with mature trees and livestock, give a tranquil sense of space, with moving and static water framed in an undulating landscape.

Another great garden not too far to travel is :-
1 POVEY'S COTTAGE, Stoney Heath, Baughurst, Tadley, RG27 5SN

findagarden.ngs.org.uk/garden/37061/1-poveys-cottage



OPENING: 10th & 11th June and 22nd & 23rd July
1pm to 5pm

ADMISSION: £5.00 Children free. Pre-Booking
available: Card Payment available:

REFRESHMENTS: Home-made teas.

Povey's Cottage is an old, farm-workers cottage on the former estate of the Duke of Wellington. It is placed in a one and a half-acre garden developed over the last 10 years from pony pasture. This is a 'cottage garden', with a mixture of herbaceous beds, a small orchard, and with our bees in mind, a wild-flower area. One of the 2 greenhouses has a section of colourful alpine plants. There is a productive, enclosed fruit cage and vegetable garden. The beehives are in the corner of the garden. In the Spring there are several most attractive wisterias festooning a couple of archways. The highlight of the garden is our natural swimming pool, surrounded by shallow gravel and clay beds, growing a profusion of reeds, water lilies and water plants, which is a magnet for swallows and dragon-flies.

THIS GARDEN ALSO OPENS BY ARRANGEMENT FROM JANUARY TO DECEMBER, FOR GROUPS FROM 15 +. CONTACT GARDEN OWNERS.

Finally in the same area:-

TADLEY PLACE, Church Lane, Baughurst, Tadley, RG26 5LA

OPENING: Sunday 25th June 2pm to 5pm

ADMISSION: £6.00 children free. Pre-booking available. Card Payment available.

REFRESHMENT: Light Refreshment.

findagarden.ngs.org.uk/garden/37182/tadley-place

The house sits in the middle of its gardens, with formal herbaceous borders. The garden has extensive mature yew hedges, pleached limes and specimen trees including a large mulberry. The large kitchen garden includes a cutting area, as



well as chickens and ducks. The garden was laid out by the RHS in the 1960's and is the subject of an ongoing rejuvenation with borders gradually being replanted, within the original formal structure. There are new features being introduced such as a wildflower area, and more informal naturalised planting in the small arboretum. There is a bluebell wood opposite the house with a pond that has recently been redeveloped and planted for biodiversity.

I hope you will find something to enjoy visiting during this our busy period.

Best Wishes, **Pat Beagley** (Head of Publicity)

National Garden Scheme – Hampshire

pat.beagley@ngs.org.uk



CEDAR DALE
ARBORICULTURAL
SPECIALISTS
LTD

The Complete Tree Service

Teams all over Surrey, Hampshire & Berkshire

- Fully trained & certified staff
- £10m Public Liability Insurance
- Health & Safety focused
- 25 years' experience
- We guarantee we can help
- Call for professional, friendly advice

■ Tree removal, thinning & lifting
■ Scrub clearance & hedge trimming

■ Residential & commercial work
■ Stumps removed

01256 763 162 • 01252 624 702

Images, video footage, client lists and more at:
www.cedardale.co.uk



PHOENIX FENCING SUPPLIES LTD

Are you looking for fencing and decking material in Basingstoke and throughout the surrounding areas? If so, why not pay a visit to Phoenix Fencing Supplies Ltd? We stock a large range of high quality European panels, decking & fence panels.



behind Cemex Concrete
off Gresley Road
Swing Swang Lane
Basingstoke RG24 8NR

01256 841199

sales@phoenixfencingsupplies.co.uk
www.phoenixfencingsupplies.co.uk



County Councillor Report

Cllr. Elaine Still

Pot holes

Potholes and other road defects are one of our biggest issues locally so I thought I would talk a bit about what is being done about them. As I've said before, the weather this winter had the worst possible combination of prolonged heavy rain and sub-zero temperatures.

Despite last summer's drought, we started the winter season with groundwater levels in Hampshire higher than normal. The repeated cycle of rain > freeze > rain > freeze created the perfect environment for potholes to form, and in addition the prolonged periods of heavy rain have kept groundwater levels exceptionally high resulting in localised surface water flooding, and this is despite HCC's efforts to keep roadside grips, gullies and drains clear.

Potholes can form in a number of ways. Aside from general wear and tear, the freeze-thaw action of water when it gets into cracks can rapidly weaken and break open road surfaces, and this is in addition to the hydraulic effect of vehicle tyres constantly going over standing water in cracks and other small surface defects that can also create potholes. This explains why, even though we are moving into summer, potholes are continuing to develop and why some of the temporary fixes are beginning to break down.

Given the high number of potholes that have formed this winter, particularly after each of the spells of freezing weather, HCC's Highways team took the decision to carry out more emergency temporary infill repairs to keep roads safe and serviceable – in the time taken to undertake a permanent fix between 4 and 7 temporary infills can be completed. As a result, over 40,000 of these potholes were filled in the three months from December to February.

The Government has allocated just under £6million to Hampshire for additional pothole repairs. We anticipate this money being used to fill approximately 39,000 additional potholes over the summer.

As ever, please do report potholes online via www.hants.gov.uk/transport/roadmaintenance/roadproblems/potholes

Schools

Parents in Hampshire who applied on time for a school place for children starting school in September 2023 – either in Reception Year or in Year 3 in a junior school – have been sent the outcome of their application by Hampshire County Council.

Over 98 per cent (98.77 per cent) of parents have been offered a reception year place for their child in one of their three preferred choice schools, with more than 93 per cent (93.02 per cent) allocated a place at their first choice of school. Of pupils transferring from infant school to junior school (Year 3), more than 99 per cent (99.29 per cent) received a place at one of their three choices, and over 97 per cent (97.88 per cent) obtained a place at their first choice of school.

Parents are being encouraged at this time to consider how their child will travel to and from school, and whether they may need transport assistance. School transport is available for children who meet specific eligibility criteria, after they reach compulsory school age (five years old). The deadline to submit transport applications is 31 July 2023. For more information about school transport assistance, please visit the County Council's website.

The Big Fix

With 'The Big Fix' campaign running throughout May, Hampshire residents are being encouraged to give old items, gathering dust or potentially destined for the bin, a new lease of life by visiting their local Repair Café, helping themselves to save money and reduce waste.

The Big Fix is a national campaign to promote the growing number of Repair Cafés across the UK, run by volunteers who teach residents how to fix items at home so that fewer items end up as waste.

There are 17 members of the County Council's Hampshire Repair Café network which offers training and general advice. Since May last year, the network has collectively run over 90 events restoring over 1,000 items to usable order. These include broken items such as electronics, garden equipment, clothing, jewellery, and much more. The initiative is supported through HCC's waste prevention community grant programme.

To find a local event, search for 'Hampshire Repair Café Network', or visit: therestartproject.org/networks/hampshire

Beware ticks

HCC's Countryside Service has advised residents to be 'tick aware' when spending time outdoors as the summer approaches. Ticks are small spider-like animals, almost invisible to the eye. They can cause serious illnesses, such as Lyme Disease.

Prevention tips include avoiding tall grassy areas, reduce the amount of exposed skin, check yourself, your children and your pets for ticks and use insect repellent.

They advise that you should remove any found ticks as quickly as possible with fine-tipped tweezers or a tick removal tool, clean the area, and for several weeks monitor the bitten area for any rashes that may appear. Contact your doctor immediately if you begin to feel unwell with flu-like symptoms or develop a spreading circular red rash.

God save the King!

What a fabulous Coronation weekend we all witnessed. It was wonderful to see the communities coming together in celebration. For me, it has also been a great opportunity to see the benefits of some of the grants I have given this year.

The new season for HCC grants opens in June, do let me know if there are any good community projects in need of support.

Meeting & Party Venues in Old Basing & Lychpit

Old Basing & Lychpit has a number of venues suitable for evening and weekend hire for all types of parties and meetings and other group events. For information or to enquire about availability please contact the individual venues as shown below.

Lychpit Community Hall and Old Basing Pavilion Tea Room

Email deputy.clerk@oldbasing.gov.uk

A calendar showing regular events and hall availability for parties can be found on the Parish Council's website www.oldbasing.gov.uk
01256 462847

Old Basing Village Hall & Frank Goddard Room

If you would like to enquire further please contact the Booking Secretary, Heulwen Norfolk on **07544 289932** or bookings@oldbasingvillagehall.co.uk

The Beddington Centre

For children's parties and meetings of up to approx.50. Cat via email beddingtoncentrebookings@gmail.com

Old Basing Cricket Club

Licensed club house for parties and events of up to 50 people. John Huntingdon **07966 394599**

Old Basing Royal British Legion

Large fully-licensed function room with stage and dance floor, available for all types of gatherings such as weddings, funeral wakes, children's parties or training sessions. Maximum capacity 120. Also available are two board/meeting rooms each with tea and coffee making facilities and wifi. socialclubentertainments@gmail.com or **01256 465800** or **07437 016815**

Parish Meeting Room

Adjacent to St Mary's Church, Old Basing, this room is suitable for groups of up to 60 (seated), 100 (standing). Please note: limited parking.

Debbie Filer, Administrator **07541 698235**

Basing House

Great Barn – Walled Garden – Courtyard – Learning/Community Room. For more information please visit our website www.hampshireculture.org.uk/basinghouseorg.uk Alternatively please contact us at Basing House on **01256 463965** during opening times.

Neighbourhood Watch

OPERATION EASTER: TACKLING WILD BIRD EGG AND CHICK THEFT

We are asking our communities to keep an eye out for any suspicious activity around bird nesting sites this year, and to report this to police. Further details can be found in the poster below.

WARNING!

OPERATION EASTER

Tackling Wild Bird Egg and Chick Theft

Now until late May, nests may be raided for eggs by collectors or for chicks for the illegal trade. Report anyone acting suspiciously around a nest to police immediately. Get a description/photo & vehicle registration if safe to do so.

CALL YOUR LOCAL POLICE

101 IN AN EMERGENCY ALWAYS CALL 999

UK National Wildlife Crime Unit | HAMPSHIRE & ISLE OF WIGHT CONSTABULARY | COUNTRY WATCH

WHATSAPP SCAM WARNING

Action Fraud has received over 60 reports relating to a scam that steals access to a victim's #whatsapp account.

The scam begins when a criminal gets access to another WhatsApp account which has you listed as a contact.

The criminal, posing as your friend or someone that's a member of a WhatsApp group you're in, will then send you seemingly normal messages to try and start a conversation with you. However, around the same time you will receive a text message from WhatsApp with a six-digit code. This is because the criminal has been trying to login to WhatsApp using your mobile number.

The criminal will claim that they sent you their code by accident and ask you to help them by sending it to them. Once the criminal has this code, they can login to your WhatsApp account and lock you out.

The criminal will then use the same tactic with your WhatsApp contacts in an effort to steal more accounts and use them to perpetrate fraud.

What can you do?

- Set up two-step verification (2fa) to give an extra layer of protection to your account. Tap Settings > Account > Two-step verification > Enable.
- STOP. THINK. CALL. If a family member or friend makes an unusual request on WhatsApp, always call the person to confirm their identity.
- Never share your account's activation code (that's the 6 digit code you receive via SMS)
- You can report spam messages or block a sender within WhatsApp. Press and hold on the message bubble, select 'Report' and then follow the instructions

For more information about protecting yourself online Google - "National Cyber Security Centre Cyberaware" or "Take Five to Stop Fraud"

LIVESTOCK WORRYING



Sheep on your countryside walks are pregnant and will give birth in the Spring. Help them stay safe by keeping dogs on a lead.

- Livestock worrying is a criminal offence and comes under the Dogs (Protection of Livestock) Act 1953. It comes with a maximum fine of £1000.
- 'Worrying' is where a dog attacks or chases livestock causing injury or suffering.
- This isn't just a threat to a farmer or land owner's livelihood, it's also a dangerous situation for the animals involved, and could lead to more risk if the animals get onto the road.
- A farmer is allowed to kill the dog if it's worrying their livestock.

Always keep your dog under control around other animals and if you see a dog on the loose worrying animals, report it online via

www.hampshire.police.uk/ro/report/ocr/af/how-to-report-a-crime



The Ivy Club, Old Basing

We celebrated the coronation of King Charles III in style, putting on a luncheon of Fish and Chips, followed by trifle and not forgetting some bubbly to toast the new monarch and as you can see from the photograph we upheld tradition being dressed in red, white and blue.

A lovely afternoon was had by all partaking in a quiz and rounding proceedings off with a super raffle.

We have to thank Cllr Elaine Still who aided us in applying for a coronation grant from Hampshire County Council which funded this event.

We are always pleased to see you at The Ivy Club which is held every Wednesday in The RBL Hall, we offer a variety of activities, refreshments and a raffle for £2.00 per week. The best OAP Club in the area.



Spencer & Peyton Ltd

24 hours a day

Funeral Directors and Monumental Masons

3rd Generation family
owned and run since 1961

Trading Standards approved

ON SITE FLORIST

Pre-paid funeral plans
discussed without obligation

380 Worting Road
Basingstoke, RG22 5DZ
01256 323165

7 London Road
Hook, RG27 9DY
01256 761717

spencerandpeyton@btconnect.com
www.spencerandpeyton.co.uk

01256 355556
www.theflowergirlflorist.co.uk

MARK SMITH
PLUMBING & HEATING
Established 1971

01256 782410

All Aspects of Gas, Plumbing & Heating
Kitchen & Bathroom Installations
Solar & Air Source Heat Pumps

info@marksmithplumbing.co.uk
www.marksmithplumbing.co.uk

Showroom & Office
32 Oakley Lane, Oakley, Basingstoke, Hants RG23 7JY

Proud members of
Checkatrade.com
Where reputation matters

Buying Tickets Safely Online

You want tickets to see your favourite band, a festival or a big sporting event. The box office and other well-known sites have sold out, and you're reluctant to pay the prices on the fan ticket exchange sites. So you respond to an ad on social media or an online marketplace.

The seller tells you they'll post or email the tickets as soon as you've transferred the money to their bank account. But when you try to contact them after nothing's arrived, they've disappeared off the face of the earth. Checking a fan forum, you find that dozens of other people have fallen victim to the same fraud.

This happens to thousands of music, sports and other fans every year who get tricked into buying fake or non-existent tickets.

However desperate you are to get into a gig, festival or game, don't buy tickets from anyone apart from official vendors, the box office or reputable fan reseller sites.

Your expert ticket buying tips

- Buy tickets only from the venue's box office, sports club, promoter, official agent or reputable ticket exchange sites.
- Consider that tickets advertised on any other source such as auction sites, social media and fan forums may be fake or non-existent, however authentic the seller may seem and whether they're advertised below, above or at face value.
- Don't be tempted to click on social media, text or email links or attachments offering tickets, as they could link to fraudulent or malware sites.
- Paying for tickets by bank transfer – however desperate you are to get hold of them – could result in you losing your money if it's a fraud.



The responsibility for losses lies with you, not anybody else, including your bank.

- Check sellers' privacy and returns policies.
- Consider paying by credit card to get additional protection over other payment methods.
- Double-check all details of your purchase before confirming payment.
- Before buying online, check that the page is genuine (carefully enter the address yourself, not from a link) and secure ('https' and a locked padlock), and log out when you've completed the transaction.
- Keep receipts until after the event.

Activities for older people at Basingstoke Leisure Park

Basingstoke Leisure Park offers a great selection of activities for older people.

For something active visit the Aquadrome for a swim or take part in one of their health groups. Loddon Vale Indoor Bowling Club has walk-in sessions for new bowlers.

If bingo is your thing, visit the spacious Buzz Bingo hall which also offers slot machines, live entertainment and food and drink throughout the day for those aged 18 and over.

Catch one of the latest movies at Odeon cinema whilst indulging in an icy, hot or sweet treat.

Enjoy a day out with the family at Milestones Living History Museum where you can travel the cobbled streets of yesteryear finding buildings, shops and vehicles recreated and restored as they would have been in olden times.

You'll find ample free parking and places to eat too.

Old Basing Infant School

At the start of the summer term we hosted our Sports' Morning.



An unusual time, you may think with most schools opting to do this annual event in June or July. However, the cooler April day worked brilliantly for the children who didn't overheat and the parents were kept warm with coats and coffee. The event is a great occasion for the school community to come together with everyone enjoying the activities and competing hard to be the winning class in their year group.

The coronation was another occasion to celebrate in school and the children learnt a new song specifically for the day, as well as learning the National Anthem, with those of us older members of the school working hard to remember to sing 'King' at the appropriate moment rather than 'Queen'! On 4th May we took a group of Year 2 children to Basingfield Court to create Coronation bunting, play Coronation Bingo and spend time talking to the residents about their recollections of the Queen's Coronation in 1953. It was a lovely hour that both young and old enjoyed hugely. We also marked the Coronation on Friday 5th May with a 'Street Party' in the school playground.

The entire school lunch was moved outside with tables and chairs set up all around the playground and the children making placemats and party hats. The children all enjoyed this novel lunchtime and it was finished off with fun on the school field and an excellent celebratory coronation cake created by our HC3S kitchen staff. Special thanks to Mariana Manta-Wood for her excellent cake decorating skills. As the children left to enjoy the Coronation weekend, they were delighted to receive a commemorative coin from the school as well as a commemorative pin from the Parish Council.

We continue to search for volunteers to support children across the school with reading and mental maths. Volunteering in school is open to anyone with an interest who can spare an hour or two each week to join us. On applying to volunteer you will be asked to complete a short application form, to provide a referee and to have a DBS clearance which we will organise for you. If you are interested in volunteering, please contact the school office who will be happy to provide you with the application form as a first step.

adminoffice@oldbasing.hants.sch.uk

Enhance your outdoor living space



Verandas • Glass Rooms • Awnings • Pergolas
Carports • Solar Garage Doors & Shutters



SBI Ltd 0800 0742 721 sbiproducts.co.uk

CROOMBS ELECTRICAL



ELECTRICAL CONTRACTORS FIRE PROTECTION SERVICES

Installations, repairs and maintenance to
industrial, commercial and domestic premises
Fire & Intruder Alarm Systems • Computer Cabling
Lighting & Design • Rewiring • Access Control
Portable Appliance Testing

24 HOUR
EMERGENCY
SERVICE

01256 357923
www.croombs.co.uk



www.srhalltd.co.uk

S R Hall Ltd
Building, Plumbing & Heating Contractors

All aspects of domestic plumbing and building
Bathroom and kitchen installations
Boiler installation, service and repair
Central heating servicing
Hot water cylinder replacement



We now offer a
24 hour call out
service

Just a selection of
the services we offer

01256 765535
enquiries@srhalltd.co.uk

Lychpit Community Residents Association

INTEC Warehouse Development

Residents of Lychpit have been actively involved in opposing the proposed redevelopment of the Intec Business Park.

The opposition is in response to a planning application (20/02802/FUL) that has been submitted which seeks to construct three warehouses.

The site was originally designated for office use only, but after a change of land use was put through without consultation the proposal for warehouses to be built was submitted. The planning application details the demolition of existing offices and the construction of warehouses for distribution purposes, including considerations for HGV access, and for the intended operation of these warehouses to be 24 hours a day, 7 days a week.

Lychpit residents understand the need to develop the derelict site but are troubled by the thought of dealing with the noise, air and light pollution of a distribution centre during all hours. Dozens of objections were submitted against the proposal which led to the application being taken to the

Development Control Committee for decision.

Despite the residents' objections and the outstanding concerns raised by councillors, the development control committee approved the plans with some modifications. An amendment to the conditions of approval was made, specifying that no machinery, plant operations, or deliveries would be permitted between 11 pm and 7 am in Unit C, which is approximately 15 metres away from the nearest home. 24/7 operation of site A and B will be permitted.

Ultimately, the approval of the plans has left residents disappointed and concerned about the impending changes to their neighbourhood. The decision raises questions about the balance between economic development and ensuring the well-being and quality of life for those living in close proximity to such commercial projects.



Alligator

Heating & Cooling Ltd

Hampshire's Local Air Con Specialists

01264 360361

info@alligatorhc.com

www.alligatorhc.com

Save Money

**WARM in the winter
COOL in the Summer**

Great Service

**LOW Prices
FULLY Certified
PEACE of Mind**



Checkatrade.com



**WE WON'T BE
BEATEN ON
Price***

*Like for like

Alligator Heating and Cooling Ltd Andover Down Farm, Andover, Hampshire SP116LJ Registered no: 13888915 registered in England



Amberwood designs

WITH A WEALTH OF EXPERIENCE,
WE HAVE THE SKILLS TO HELP

amberwooddesigns.co.uk



Windows, Doors & Conservatories in PVC, Aluminium, Timber
and Solid Replacement Roofs for Conservatories.

So What Is Different About Amberwood?

It's straight-forward really, just honest advice from renowned experts in their field offering the highest quality PVC, Aluminium and Timber products at the very best prices. The philosophy of Amberwood Designs is simple. If you offer the best advice, use the very best products, offer the very best prices, use the very best installers and keep your overheads low, then the customer will be delighted and the company will prosper.

Show Site: Open Mon-Fri 8am-5pm

Ground Floor, Estate Offices, Youngs Ind. Estate,
Paices Hill, Aldermaston, Berkshire, RG7 4PW

Tel: **01189 820300** Mob: **07553 361012**

office@amberwooddesigns.co.uk



A lifestyle
tailored
to you

care UK

Residents' quality of life is at the heart of everything we do, helping individuals to stay active and independent so they can live each day to the full.

If you're considering care call
01256 809689.

Trusted to care

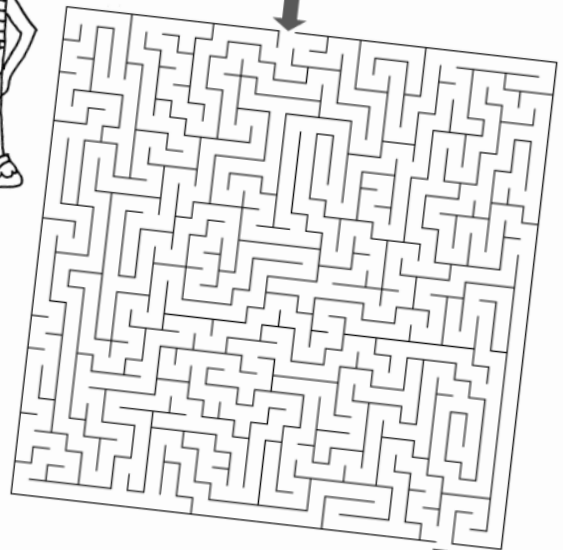
Dashwood Manor care home,
Basingstoke
careuk.com/dashwood-manor

Children's CoRner

Summertime Maze



The little girl has just walked to the beach but has forgotten her bucket. Can you help her find it?



www.kidspuzzlesandgames.co.uk

Summer Word Search

s	s	p	a	d	e	s	t	i	c	s	a	r	s	s	
e	p	o	t	e	i	n	s	i	k	i	b	o	l	y	r
p	s	h	o	r	t	s	p	i	d	b	n	c	l	i	
a	e	t	d	m	c	g	n	a	u	o	l	a	f	c	
r	j	h	r	a	t	n	d	c	s	x	n	m	r	s	
k	h	l	s	r	r	i	k	e	c	i	n	p	e	n	
n	u	e	o	a	v	e	q	u	i	n	c	i	t	a	
i	o	t	d	t	t	m	a	r	a	g	e	n	n	p	
l	t	p	i	c	n	i	c	s	e	c	n	g	u	p	
m	e	c	u	o	r	j	t	t	u	b	e	a	c	h	
y	r	s	r	n	g	s	n	f	l	y	r	a	n	r	
c	v	a	s	w	i	m	m	i	n	g	s	o	u	g	
f	v	a	c	a	t	i	o	n	o	m	k	o	y	s	

beach
bucket
spade
swimming
bikini

park
camping
picnic
vacation
shorts



www.kidspuzzlesandgames.co.uk

Answers on page 35

19

HM

87

HAVEN MEMORIALS

MONUMENTAL MASON

We are a local family-run monumental masons that has provided over three decades of service to the community, built on the principles of care, trust and support.

At Haven Memorials, we pride ourselves on our expertise in hand-sourcing the finest quality materials, applying traditional techniques, and delivering exceptional craftsmanship to produce beautifully-carved memorials to remember your loved ones.

We are dedicated to supporting you every step of the way and assisting you when you need it the most. Our care and craftsmanship, coupled with our commitment to providing a personal memorial that aptly commemorates your loved one's life is an honour that we all feel.

From our wide variety of premium quality monuments and designs, we can help you in creating the most appropriate headstone, memorial or marker to celebrate the life of your loved one. We provide additional features such as marble statues, memorial vases and graveside ornaments to add a genuinely distinctive touch.

For three decades, we have demonstrated our values of integrity, quality and care to provide an honest, reliable service and exceptional craftsmanship. Our skilled and considerate team delivers a comprehensive memorial masonry service that maintains the highest level of excellence and provides support and guidance throughout.

At Haven Memorials, we are dedicated to supporting you with choosing or creating the perfect wording to reflect your loved one that provides a fitting tribute. Our team of memorial specialists has over 30 years of experience in helping you to aptly commemorate your loved one with beautiful and personal inscriptions. If you have an inscription you would like us to place on your loved one's memorial, you can also submit your own original message for us to inscribe.

All memorial and headstone inscriptions are handled by our experienced and certified craftsmen. You can choose from hand-carved letters or the most up-to-date machine cutting technique for inscription on your loved one's memorial. We can use gold leaf or long-lasting enamel paint in a variety of colours to create your message.

Reflecting modern and traditional designs, we also provide a range of lettering and finishing techniques and styles, including flush lead-filled letters for marble or raised lead and painted letters for granite.

Based on your needs, we can help you choose the ideal design for your loved one's personal memorial.

19

HM

87

HAVEN MEMORIALS

MONUMENTAL MASON



The Village Cafe

Summer, it's hard to believe we are halfway through the year already!

Summer is a splendid time of year, hopefully, full of long warm days spent with friends and family, and evenings warm enough to sit outside until it's dark. Sunshine always makes us feel better, it's like a tonic for the soul and we hope whatever you are doing this summer, that you enjoy every moment, every celebration, and every lazy garden day.

Here at the cafe, we will soon be closing for the holidays, our last opening afternoon is Friday 21st July, this will be a much-needed rest for all our volunteers. We will reopen on Friday 8th September. As always, we welcome anyone who would like to join our existing team, either as a baker or to help serve out lovely customers, just get in touch. We are a volunteer community run cafe and any profits made are used to fund local projects that benefit all, or a specific group. In the past we have funded 2AED's to provide lifesaving emergency care, made donations to both the Infants and Junior schools to help purchase sports equipment for the children and provided afternoon tea to members of the Ivy Club.

We have also been running our "Baking you smile" initiative since last October. This enables members of our community to nominate someone who they feel deserves a smile, for whatever reason,

providing they live within the Old Basing or Lychpit area. Members of our team deliver to their doorsteps, and it is true, people really do smile. We have met some lovely people on our deliveries, and it brings a smile to us too.

A moment of history in May this year was the Coronation of King Charles III. The cafe team are always looking for ways to make our afternoons a little special to commemorate such occasions and so to celebrate, the cafe offered cakes with a coronation theme and a glass of bubbly. As something a little extra, we offered any of our customers with a birthday of 6th May, a free cake of their choice. To our surprise, we didn't have anyone take up this offer so assume no one had a birthday!

Thank you to Dean who came along and played lovely background music on his guitar, it really gave a fabulous atmosphere.

The cafe will return in September, and we will be very pleased to see you all, do come along and enjoy a freshly baked cake and a drink, I'm sure we will have something for everyone and a few themed afternoons too.

Enjoy your summer!



Old Basing Womens Institute



Old Basing WI has been running for 104 years and currently has over 40 Members from Old Basing and Lychpit, the surrounding villages and beyond.

We provide a selection of speakers throughout the year at our monthly meetings as well as taking part in social activities, quizzes, talks and walks. In February we had a talk from Nigel Knott from Canine Partners, telling us about how these amazing dogs transform the lives of people with handicaps. He explained how the dogs were selected and trained and gave us a presentation on some of the tasks that the dogs can do to make independent living easier for people.

Our March speaker was Robbie Sprague, a retired-head master from Chandlers Ford who spoke to us about poetry. He read some well known poems to us and also entertained us with some poems that we had not heard before.

In March we heard that we had been successful in applying for a grant from Basingstoke and Deane Council which enabled us to buy a gazebo, tables and some tablecloths. These will be put to good use at the Old Basing Carnival on 17th June. Please do come along and support us at our very popular stall where we will be selling cakes, bakes and preserves as well as craft items. We will be having a wine raffle for adults and a "guess the number of sweets in the jar" for the youngsters too. The WI will also be marching in the Carnival procession for the first time in recent years, from the Legion to the Recreation Ground, so keep a look out for us there with our banner!

Five Members made the trip to Portsmouth Guildhall for the Hampshire County Federation WI Annual Meeting. This was a very enjoyable day with "Eddie the Eagle" giving the keynote speech. Seven Members travelled to Oakley to hear a fascinating talk entitled "Kirtles, Corsets and Curtains" by Sarah Slater, a tour guide at Hampton Court Palace. Members are also able to take part in activities organised at Eastleigh by Hampshire WI and recent events have been a talk and trip to the FAST Museum at Farnborough, as well as a needle felting course.

Our Annual Meeting took place in May and our new committee was elected. We had to say goodbye to Pat Moy, one of our committee members who has moved away to Andover to be nearer her family. Pat has been a most helpful and enthusiastic supporter of the WI in Old Basing over recent years.

Apart from our monthly meetings, we also manage at least one other activity each month. In April we enjoyed a fish and chip lunch courtesy of Olivers and some of us managed a walk into town to view the shoe exhibition at the Willis Museum.

EMBROIDERY

Our Craft Group meets each month as well, and in the summer months we are lucky to meet at the Cow Byre at Basing House where we are made very welcome. This year we have learnt how to do wet felting from pure wool and embroidered the results. We are also busy making some knitted animals for an activity later in the year and in June we will be shown how to make glass suncatchers.

WET FELTING

Most of our popular events take place in the warmer months. In May, we had a coach trip to Pamela Lewis's garden near Devizes. Pamela is a WI Member and also a well-known flower arranger. We had a lovely lunch after a tour of the garden, and then we enjoyed a flower arranging demonstration by Pamela. Some lucky Members were even able to bring the arrangements home.

Other activities planned for June and July include a Friday afternoon tea at the Village Café, and our popular evening Garden Party which is held in a member's garden. We will also be taking part in the St Mary's Summer Festival at the end of June, and we are planning our stall entitled "God's Creatures" to fit in with the theme of All Things Bright and Beautiful, All Creatures Great and Small". So do pop along and have a chat with us there.

Later in the year we will be taking part in the Remembrance Day Service and we will also be having a stall at the Basing House Christmas Fair at the end of November as usual.

Our speakers are all booked up for the 2023/24 season, starting with Sophie Fryer in June talking about Hats and Millinery. Next year will be our 105th Birthday, and we will be celebrating that as well! So, if you would like to find out more about our long running and very active group, then please contact our President Sue Stewart on oldbasingpres@hampshirewi.org.uk

We meet on the first Tuesday of every month at the Parish Rooms St Mary's at 7.30pm.

POLICING BASINGSTOKE



PARTNERSHIP UPDATE



During the February half term, the first BasingSafe event took place in Festival Place. This partnership initiative was a collaboration of more than 30 partners and organisations who came together to run a drop in event for young people aged between 11 and 18 to provide them with the opportunity to find out about local facilities, support services and activities that are available to them outside of school hours.



Research has shown that children who take part in structured activities outside of school are less likely to become involved in crime or become victims of exploitation.



As part of our ongoing work to tackle drug related harm and violent crime and

protect our young, we are always looking at different ways to engage with the young members of our community to provide them with advice and guidance and show those who are more vulnerable that there is a life for them outside of crime and divert them away from it.

This initiative is all about engaging with young people, rather than talking at them, and we hope this event will encourage other areas of the county to do something similar.

Activities on the day included Jiu Jitsu, a Graffiti Wall, Hampshire Cricket, Army Outreach, the Princes Trust, Anvil Arts, and Fluid Motion Theatre, as well as the YMCA, Stop Domestic Abuse, Solent Mind, and the Youth Commission.



This was an extremely successful event with an excellent turn out, seeing many of our local young people coming in to chat and join in with the activities and speak to partners.

This would not have been possible without our partners at Festival Place who provided us with a free unit and all our other helpers and partners who were involved in the organising and running of the event on the day. You are all superstars!

TACKLING FRAUDSTERS

Officers in Hampshire and the Isle of Wight made ten arrests in ongoing investigations as part of Operation Henhouse, a national intensification period targeting suspected fraudsters.

The activity took place in February, with officers from Hampshire & Isle of Wight Constabulary focusing on outstanding suspects in ongoing investigations.

As well as making ten arrests, three people attended a police station on a voluntary basis to be interviewed under caution, and ten premises were searched.

Operation Henhouse was led by the National Crime Agency's National Economic Crime Centre, and involved forces from across the country. Nationally, hundreds of arrests were made and £6.2million in assets were seized or restrained. Acting Detective Inspector Marcus Mills, from Hampshire & Isle of Wight Constabulary's Economic Crime Unit, said: "Fraud can have a devastating impact on individuals, businesses and communities. It is a widespread crime covering a range of offences and anyone can become a victim.

"Our activity during this intensification period shows that we take fraud seriously and take proactive action. Enquiries on all these investigations will continue.

"Our message is that if you are a victim of fraud, you can report it at any time via www.actionfraud.co.uk or call **0300 123 2040**, so that trends and investigative opportunities can be identified and to ultimately help ensure others don't fall victim."

The public can take steps to help protect themselves against fraud. Be sure to protect your online accounts from compromise by criminals:

- Use 3 random words to create a strong password for your email that's different to all your other passwords, to prevent criminals accessing your personal information.
- Always use 2-step verification where possible to protect your email and most important accounts.
- Use your browser's password manager to safely store passwords.

Criminals may pretend to be a trusted person or company. If something seems suspicious or unexpected, such as requests for money or personal information, contact the organisation directly to check. The police, other government organisations and banks will never ask anyone to move their money. Use contact details from their official website, not those given in a message, email or phone call.

KEYLESS CAR THEFT

Sometime between 5.15am and 6.15am on Sunday, 26 March, a silver Land Rover was stolen from outside a property on Station Road, Overton. It was stolen without the use of a key, and at this time, the vehicle has not been recovered. Officers are carrying out a number of enquiries as part of the investigation into the incident but we wanted to remind you of our crime prevention advice to help you, your friends and family avoid becoming a victim.

Cars with keyless entry unlock automatically when the key comes within a short distance of the car. This can be from inside a pocket or bag. If you have to push a button on your car key to open your car, you don't have keyless entry. Keyless car theft or 'relay theft' is when a device is used to fool the car into thinking the key is close by. This unlocks the car and starts the ignition. Thieves only need to be within a few metres of your car key to capture the signal, even if it's



inside your home. This means that even if your car and home are secure, thieves can still unlock, start and steal your car.

Please read these tips to help you protect your car from keyless theft:

1. When at home keep your car key (and the spare) well away from the car.
2. Put the keys in a screened or signal-blocking pouch, such as a Faraday Bag.
3. Re-programme your keys if you buy a second hand car.
4. Turn off wireless signals on your fob when it's not being used.
5. Fit tested and approved in-car security locks, such as a steering wheel lock. Some vehicles can have a pin lock fitted to the steering wheel that may prevent it from being driven away. Please check with your manufacturer.
6. Tracking devices can help track down your vehicle and the perpetrator, should it be taken. Ensure it is fitted out of view.

For more advice on how to protect your car from theft, please visit our website:

www.hampshire.police.uk/cp/crime-prevention/keeping-vehicles-safe/preventing-car-vehicle-theft

Able Community

In 2023 help an older person to remain safer in their home.



Since 2019 Able Community Care, a Live-in Care Provider, has been offering older people a free door sticker to deter unwanted callers.

As many people have told us, this sticker on a door does mean they walk back down the path.

To date we have given out nearly 70,000 door stickers and if you know of an older person who would like to have one, please reply to this email or call us on **01603 764567** telling us how many you would like and the address to send them to.

www.ablecommunitycare.com

Nationwide Live-in Care Provider since 1980

It is a fact that older people are targeted by fraudulent traders, workmen and fake 'professional' people such as conmen advising they are from the Water Board, Gas Board, NHS Covid Dept., etc.



OBLEC

A full house of over 200 residents of the Old Basing and Lychpit Parish attended a Public Meeting in the Old Basing Village Hall on Saturday 15th April.

Sponsored and managed by OBLEC, which is a group of residents established by the Parish Council to combat totally inappropriate housing development plans around the parish, attendees learned about current active development threats.

Housing development plans for our area are managed and decided upon by the Basingstoke and Dean Borough Council through a process that is approved and overseen by the government. But local residents are entitled to a say when it is their area that is affected, and their views have to be registered in accordance with a detailed bureaucratic process otherwise they are largely ignored. This Public Meeting aimed to inform everyone of both the threat, and the process by which the threat could be offset. At the outset the Chairman of the Parish Council, Peter Bloyce, explained that the Borough had permitted massive housing developments, well in excess of that required by government, over many years. There was no need to continue this over-delivery, and Old Basing and Lychpit had delivered its fair share in that time.

The existing threat is a large potential housing development in three areas that could lead to as many as 2,150 new homes being built on the east side of the village near Pyott's Hill in the area of Lodge Farm and the Sewage Works (areas known to the planners as OLD001 and OLD002) and around Hodd's Farm, north of the A30 near Conkers Garden Centre (termed OLD007).

At the meeting, members of the OBLEC committee led by Alan Renwick explained where these three sites were, and the difficulties that development of each would bring to the Parish through the increase in population size that would roughly double the amount of people. Several thousand more cars would have an overwhelming impact on the narrow ancient roads and pinch points; the existing schools would be crowded out with new children, and the existing medical and community facilities would be totally unable to cope, even more than now.

Gillian Moore told the meeting that the impact of such development on the River Loddon, its flood plain and river catchment could be disastrous. The Loddon is a very environmentally-sensitive chalk stream which these days provides increasingly rare value to the nature it supports.

Residents of the whole area, not just those within the Parish, enjoy the enormous benefits that the local countryside offers for walkers and public recreation, as seen particularly during the pandemic lockdowns.

Faced with this threat, and the need to address the planning process professionally, the Parish Council had commissioned planning consultants West Waddy Archadia (WWA) to advise on how to respond to a new local plan, and Mr Steve Pickles took up the second half of the meeting in explaining the process, noting that the government is in the process of changing planning policies, due to take effect later this year.

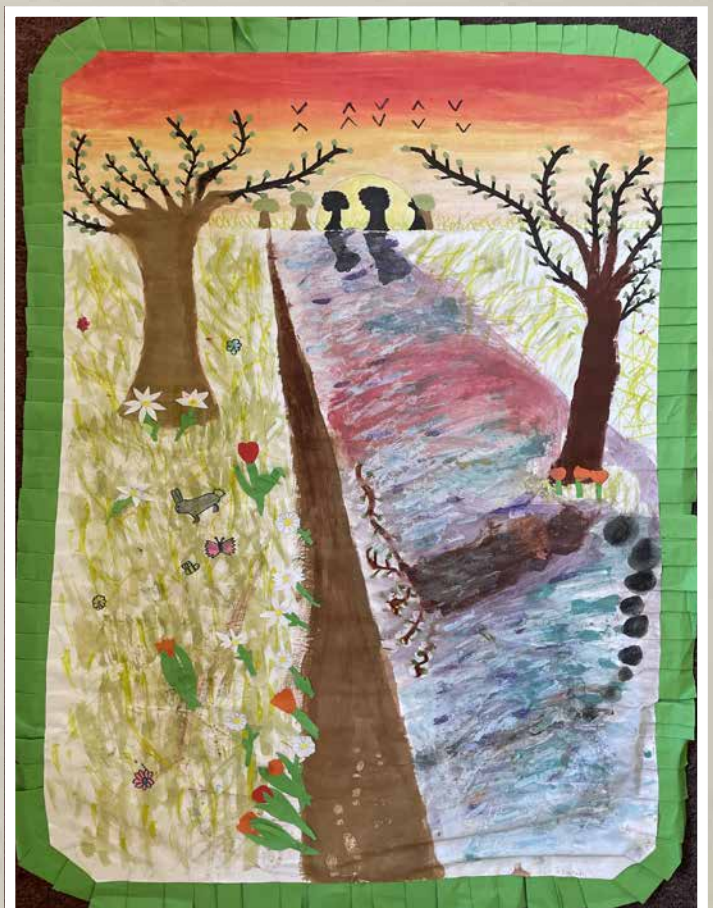
In brief, the Parish is updating the Neighbourhood Plan. The Borough's Draft Local Plan (up to 2038) will be published for a 6-week period of consultation (called Regulation 18) in the autumn of 2023. And then its successor in the draft process, Regulation 19, due about a year later will give a further opportunity to oppose inappropriate allocations of greenfield lands. It would be important to obtain evidence-based information on environment matters, and important too to suggest any alternative sites.

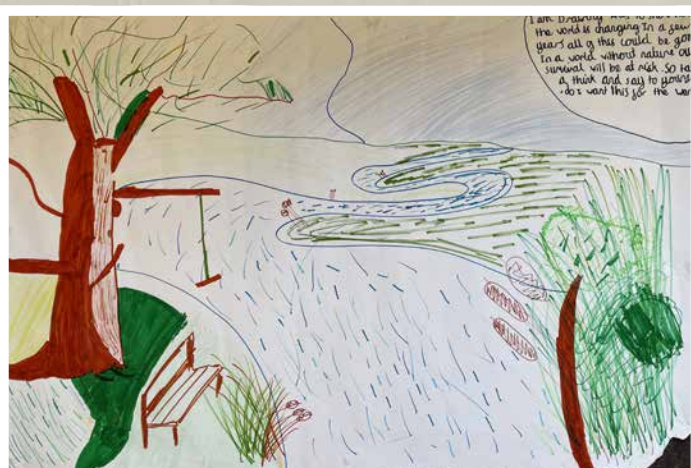
During a lively Questions and Answers, many residents asked how they could help and others expressed firm views on the motives of developers and landowners. Some made the valuable point that new homes were needed for those who required them, but it was important that development sites should be in places where they were best suited. Not on greenfields, and not where the environment would be forever adversely impacted.

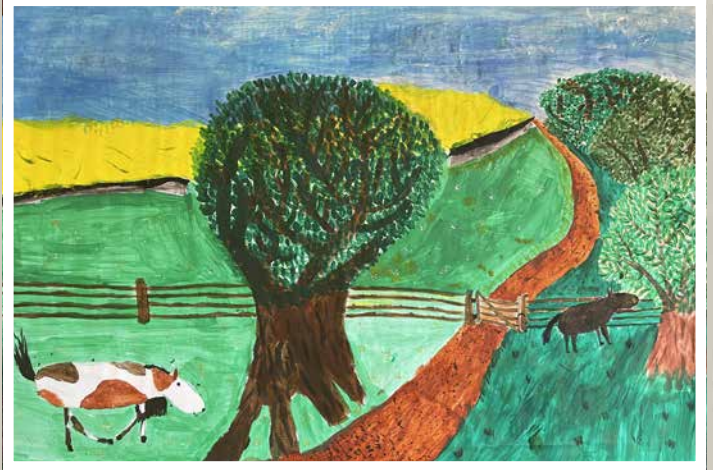
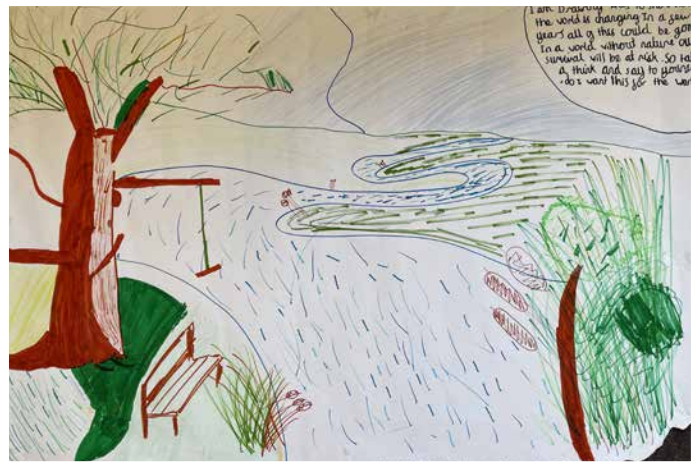
In closing Alan Renwick thanked everyone for attending, and all those who had helped in the meeting's delivery. OBLEC would let the Parish know as these development plans progressed, and would seek people to help out as specific needs arose. Its website oblec.org.uk was 'live' now and would be kept up-to-date.

Nick Harris, (Spokesman for OBLEC) 27 Apr 2023

The OBLEC Committee were very grateful to the Year 6 children at St Mary's Junior School who designed these fantastic posters to display at the public meeting and felt that the winning poster, designed by Charlotte from Davies Class, truly illustrated the importance and beauty of the local countryside and wildlife that surrounds our Parish.







Children's Corner Answers

Summer Word Search

s	p	a	d	e	s	t	i	c	s	a	r	s	s
e	p	o	t	e	i	n	i	k	i	b	o	l	y
p	s	h	o	r	t	s	p	i	d	b	n	c	l
a	e	t	d	m	c	g	n	a	u	o	l	a	f
r	j	h	r	a	t	n	d	c	s	x	n	m	r
k	h	l	s	r	r	i	k	e	c	i	n	p	e
n	u	e	o	a	v	e	q	u	i	n	c	i	t
i	o	t	d	t	t	m	a	r	a	g	e	n	p
l	t	p	i	c	n	i	c	s	e	c	n	g	u
m	e	c	u	o	r	j	t	t	u	b	e	a	c
y	r	s	r	n	g	s	n	f	l	y	r	a	n
c	v	a	s	w	i	m	m	i	n	g	s	o	u
f	v	a	c	a	t	i	o	n	o	m	k	o	y

NEW RETIREMENT APARTMENTS FOR SALE



BASINGSTOKE

Austen Lodge,
London Road RG21 4FQ

FARNBOROUGH

Yates Lodge,
Victoria Road GU14 7PN

FLEET

Jubilee Lodge,
Crookham Road GU51 5EZ

Open Tuesday - Saturday,
10am - 5pm

Fewer worries and more time for you and your loved ones

Retirement Living may not be for you right now, but perhaps you have a friend or family member who would enjoy a low maintenance, safe, secure, and independent lifestyle? **With developments all over the country, we have something for everyone.**

Contact us for more information

 **0800 077 4594**

 **enquiries@crl.co.uk**

 **crl.co.uk**

Churchill
Retirement Living 

**LODGE MANAGER • GUEST SUITE FOR FRIENDS AND FAMILY
• LIFT • LANDSCAPED GARDENS • OWNERS' LOUNGE**



F.O.O.B.S. Trail and Fun Runs 2023

10K, 5K and 2K distances

Sunday 8th
October
2023

Old Basing
Recreation
Ground

REGISTER ONLINE AT
<https://foobs.weebly.com>



A Summer Welcome from Old Basing Tennis Club

We've had a great start to the summer tennis season with monthly open social evenings so people considering tennis can come along, meet our members and see what they think of the club.

Tennis coaching has started on Fridays after school for 5 to 14-year-olds, drills for adults take place on Monday evenings, and we have regular club nights on Tuesdays and Fridays.

This summer there will be two American Tournaments held on a Saturday afternoon where players team up with different partners and the winners are the man and lady who have won the most games. It's a great way to enjoy the sunshine, fresh air and get some great exercise.

If you're walking around the recreation ground, why not sit on the benches outside the courts and enjoy watching the tennis as several people already do on their daily walks.

The Club has had a successful winter season in the Basingstoke League with the Mixed A team being crowned champions of Division 1 and the Men's A team taking second place in Division 1. Both teams played against six other clubs. Following on from this success, for the first time in many years, this summer the club will be fielding three men's teams, two ladies teams and two mixed teams. which is great news. What we need now are some youngsters to join the club as most of our players are over the age of 50!

Our club sessions are when play is not quite so competitive and members can come along without having to book and mix in whatever their standard. These take place on Tuesday and Friday evenings from 6pm and Sunday mornings from 10am.



It's not all about tennis though. After our Summer Tournament which features doubles, singles and handicapped games, we have a barbecue for families and friends. The Club also holds an annual quiz and Christmas meal which again are open to members and their guests.

The club has great facilities with four recently resurfaced courts and a newly painted clubhouse. We're located on Riley Lane next to the allotments and opposite the Bolton Arms pub.

If you're interested in finding out more, visit our website or Facebook page or email us at **obtc.information@gmail.com** and we will answer all your questions.

We hope to see you soon.



topnotch
flooring
& interiors



Expert Advice

Friendly sales staff to help and inspire you.



Quality Installation

Fully trained, in-house fitting team.



Free Measure & Quote

No obligation, competitive prices with no hidden costs.

Aftercare

Unrivalled aftersales service to make sure you're 100% satisfied with the results.

HAMPSHIRE'S PREMIER FLOORING STUDIO

Brands we work with:



Furlong Flooring
First choice flooring for every room



Tel. **01256 406646**

www.**topnotchinteriors.co.uk**

Email **topnotchinteriors@hotmail.co.uk**

Follow us on Facebook & Instagram

Unit 42-43 Basepoint Business Centre, Stroudley Road, Basingstoke, Hampshire, RG24 8UP



**We take
the stress
out of moving**

Allowing you to enjoy the summer



Call now
for your

**FREE
VALUATION!**



**Open 7 Days A Week
01256 808 454**

www.loddonproperties.com